



MLS 7084046 Residential

\$100,000

815 sq ft
3 bedrooms
1 baths

201 Schilling Road
Bagley MN 56621

Status: Active

Description:

Cozy 3-bedroom, 1-bath home conveniently located just south of Bagley on Schilling Road. This well-maintained property has served as a successful rental investment for years, offering excellent income potential for investors while also making a wonderful primary residence.

The home features two bedrooms upstairs and one bedroom on the main level. The main floor includes a full bathroom and laundry area for added convenience, along with additional flexible living space ready for your imagination—perfect for a home office, playroom, hobby room, or extra family room.

Enjoy the best of both worlds with the convenience of in-town living and the peaceful feel of the countryside. Situated on the outskirts of town, this property offers a quiet setting while still being close to local amenities. Whether you're looking for an investment opportunity or a place to call home, this property is full of potential.

Additional Details:

| | |
|------------------------|---------------|
| Year Built | 1965 |
| Lot Acres | 0.2 |
| Lot Dimensions | 57x189x58x205 |
| School District | 2311 |
| Taxes | \$542 |
| Taxes with Assessments | \$612 |
| Tax Year | 2025 |

Additional Features:

Fuel: Natural Gas **Heat:** Baseboard, Forced Air

Driving Directions:

From Bemidji head west on Highway 2 about 28 miles to Bagley. Once in Bagley take a left at the lights and go south to Schilling Rd and take another left (east) to property at 201.



Listed By:
Bemidji Property Management

Affinity Real Estate Inc. participates in the Regional Multiple Listing Service of Minnesota, Inc Broker Reciprocity (sm) program, allowing us to display other broker's listings on our website. All properties are subject to prior sale, change or withdrawal.



Call Affinity Real Estate

218-237-3333

info@affinityrealestate.com



Affinity Real Estate - 600 Park Avenue South - Park Rapids MN 56470



website: www.AffinityRealEstate.com | email: info@affinityrealestate.com | office: 218-237-3333 | fax: 218-237-3377

Affinity
REAL ESTATE INC

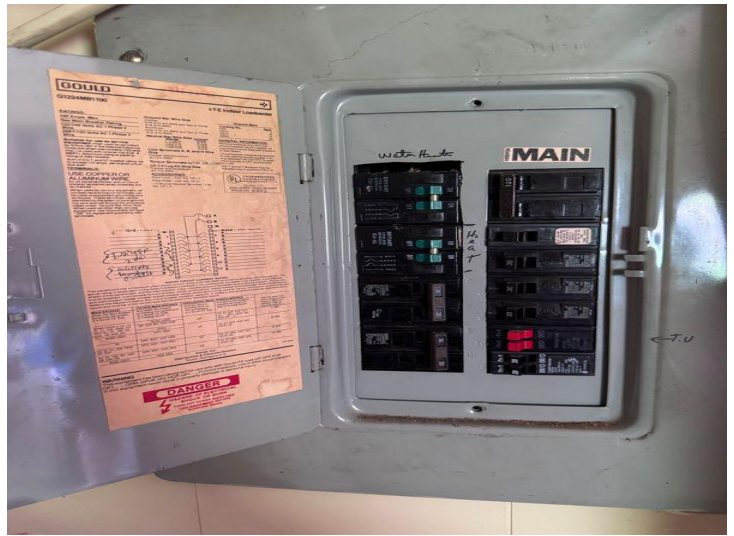
\$100,000
MLS 7084046 Residential
201 Schilling Road
Bagley MN 56621



website: www.AffinityRealEstate.com | email: info@affinityrealestate.com | office: 218-237-3333 | fax:218-237-3377

Affinity
REAL ESTATE INC

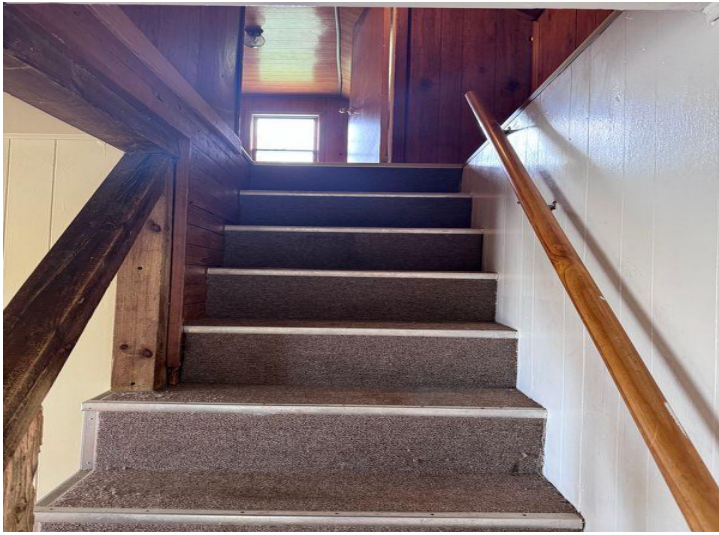
\$100,000
MLS 7084046 Residential
201 Schilling Road
Bagley MN 56621



website: www.AffinityRealEstate.com | email: info@affinityrealestate.com | office: 218-237-3333 | fax:218-237-3377



\$100,000
MLS 7084046 Residential
201 Schilling Road
Bagley MN 56621



website: www.AffinityRealEstate.com | email: info@affinityrealestate.com | office: 218-237-3333 | fax:218-237-3377



\$100,000
MLS 7084046 Residential
201 Schilling Road
Bagley MN 56621



website: www.AffinityRealEstate.com | email: info@affinityrealestate.com | office: 218-237-3333 | fax:218-237-3377



\$100,000
MLS 7084046 Residential
201 Schilling Road
Bagley MN 56621