



MLS 7084177 Land

**\$55,000**

3.3 Acres  
Finished Lot(s)

Lot 3 Pike Bay Loop  
Cass Lake MN 56633

Status: Active


**Description:**

Homes, Cabins, RV's & Pole Sheds welcome. 6 new gorgeous acreage tracts. Fully wooded, mature red and white pine with a nice mixture of hardwoods, sandy loam soil, perfect for construction, flat topography, no excessive reshaping the land needed, no wetlands, all high ground. Sand point wells have historically been the choice for many in this area. Soil perc tests have been done on each tract, no need for a mound septic system. Most importantly is the location. Setting ¼ mile from the endless Chippewa National Forest. Hunt, fish, camp, hike, bike, 4-wheel, berry pick, snowmobile, cross country ski, snowshoe and auto travel the hundreds of miles of roads and trails. This is nature's paradise right out your back door. Just into the Chippewa National Forest is the Pike Bay National Forest Park fronting on Pike Bay of the Cass Lake chain. Enjoy the very lightly used pure sugar sand swimming beach, picnic area with fire pits, tables and restroom, plus an excellent public boat landing. Pike Bay fishing is very good. The walleyes are big and fat. All of this, just 2 miles from your door. Within 3 to 5 mi are gas, groceries, hardware store, liquor store, new casino, dining and golf. Very close are other lakes, some completely surrounded by public lands with no private dwellings on them. Others with minimal development. Want to go shopping? Walker is only 15 minutes south on Hwy 371 and you can get anything at Bemidji, only 20 minutes west on Hwy 2. See additional info in the photo section.

**Additional Details:**

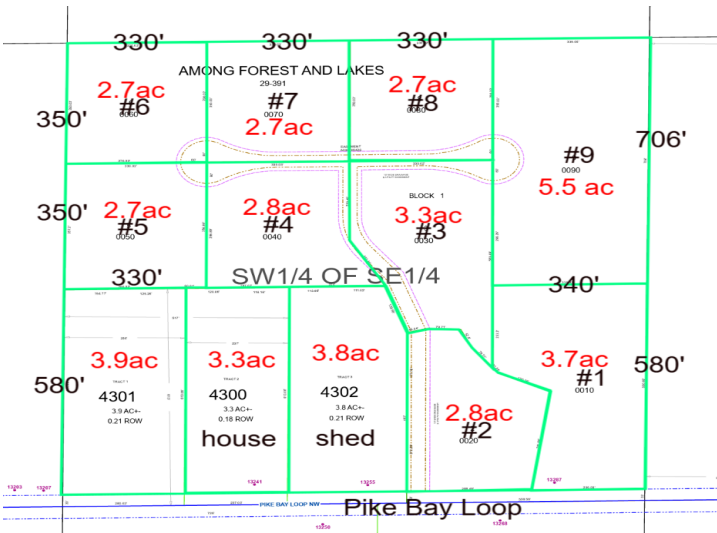
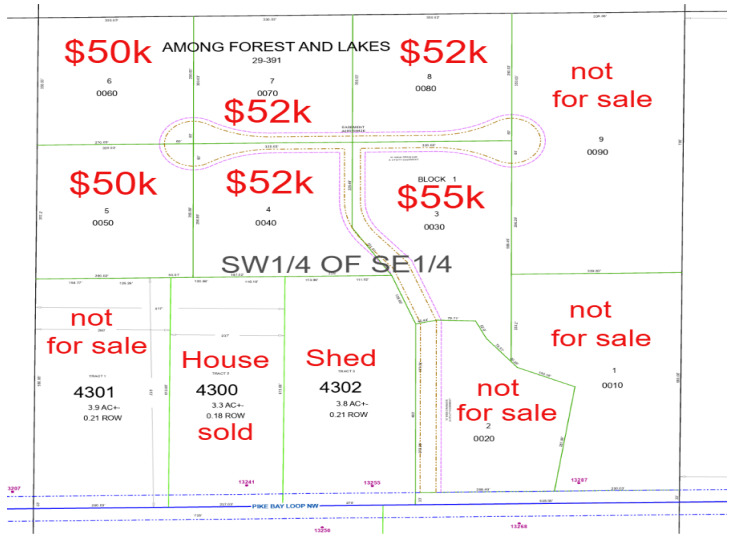
Lot Acres	3.3
Lot Dimensions	500x330x589x217
School District	115
Taxes	\$40
Taxes with Assessments	\$40
Tax Year	2026

**Additional Features:**


 Listed By:  
 Walker Area Realty  
 1/4 mile North on Hwy 371, turn right on Pike Bay Loop, 1/4 mile to Among Forest and Lakes entrance  
 Minnesota Real Estate Inc. participates in the Regional Multiple Listing Service of the City of Cass Lake, go to [www.mnmls.com](http://www.mnmls.com) for more information. All properties are subject to prior sale, change or withdrawal.


**Call Affinity Real Estate**  
**218-237-3333**  
**info@affinityrealestate.com**  
 1/4 mile North on Hwy 371, turn right on Pike Bay Loop, 1/4 mile to Among Forest and Lakes entrance  


  
**Affinity Real Estate - 600 Park Avenue South - Park Rapids MN 56470**



website: [www.AffinityRealEstate.com](http://www.AffinityRealEstate.com) | email: [info@affinityrealestate.com](mailto:info@affinityrealestate.com) | office: 218-237-3333 | fax: 218-237-3377



**\$55,000**  
 MLS 7084177 Land  
 Lot 3 Pike Bay Loop  
 Cass Lake MN 56633



**Location! Location! Location!**

**Chippewa National Forest**

Located just ¼ mile east, down Pike Bay Loop is the beginning of the expansive **Chippewa National Forest**. These public lands include over 1.6 million acres (over 2,500 square miles) and hundreds of lakes (many undeveloped with public boat access). No burden of the constant "No Trespassing" signs here! **Hunt, fish, camp, hike, bike, 4 wheel, berry pick, snowmobile, cross country ski, snowshoe and auto travel** the hundreds of miles of roads and trails. This is nature's paradise right out your back door.

**Pike Bay**

**Swimming, Fishing, Camping, Picnicking**

Only 2 mi east, down Pike Bay Loop and following the entrance road is a beautiful well maintained **National Forest Park on Pike Bay** of the Cass Lake Chain. This Park provides you with easy boat access to Pike Bay plus a gorgeous sandy public swimming beach coupled with picnic grounds and a bathroom. Additionally, there are numerous campsites that string along the sandy shoreline. Fishing is excellent, the walleyes in Pike Bay are big and fat. All of this, just 2 miles from your door.

**Cass Lake Chain**

Just 3 miles north on Hwy 371 & Hwy 2 are two nice public boat ramps and numerous resort ramps with docking rental space, giving convenient access to the main **Cass Lake Chain**. The main Cass Lake Chain is an interconnected 8 lake system spanning over 25,000 lake acres. The primary lakes are **Cass Lake, Pike Bay, Lake Andrusia, Kitchi Lake, Big Wolf Lake, Buck Lake, Little Rice Lake and Big Rice Lake**. Beyond that you can follow the Mississippi River that flows through the chain to numerous other lakes a bit farther for a never-ending adventure!

**Location! Location! Location!**

**Lakes, Lakes and More Lakes**

Within short driving distance are MANY other lakes, some completely surrounded by public lands with no private dwellings on them. Others with minimal development. Some have public boat ramps and others are accessible only by "carry-in" smaller boats, canoes and kayaks. Two favorites are **Lake 13** and **Steamboat Lake**. Both have easy boat ramp access and fabulous fishing. See the 3 maps of **Lakes & public boat ramps** included here in the pictures.

**Neighborhood Dining**

Great summer dining at the historic **CANAL HOUSE** restaurant and year around dining at the new **BOBBERS** restaurant. Both are favorites and less than 5 miles away. Additionally, there are numerous other dining options very close by that are sure to please, **Pub 33 at the new Cedar Lakes Casino, Hot Stuff Kitchen, Big Tap Bar & Grill, Sand Trap Golf Bar & Grill, Sah Kay Ta Beach Resort** (famous for homemade pizzas, nachos, malts, shakes, root beer floats & more) , **Log Jammers Bar & Grill** and don't forget the local **Dairy Queen**.

**Golf**

Just 5 minutes north off Hwy 371 is the **Sand Trap Golf Course**. This is a 9 hole regulation size course with a bar and grill. Just 12 miles south off Hwy 371 is **Long Bow Golf Course**, a well-designed 18 hole championship course, very nice. Another 10 minutes south is **Tianna Golf course**. Tianna is extremely beautiful, an 18 hole championship course with a friendly 19<sup>th</sup> hole bar and grill. Additionally, Bemidji Town and Country Club located on the north side of Lake Bemidji is a fabulous course, just a bit farther, but well worth the few extra miles.

website: [www.AffinityRealEstate.com](http://www.AffinityRealEstate.com) | email: [info@affinityrealestate.com](mailto:info@affinityrealestate.com) | office: 218-237-3333 | fax:218-237-3377



**\$55,000**  
MLS 7084177 Land  
Lot 3 Pike Bay Loop  
Cass Lake MN 56633

## Location! Location! Location!

### Local Fare

#### Groceries, Gas, Hardware, Liquor

Just 3 miles north is the **LEECH LAKE MARKET**. This is an expansive grocery store & includes fresh produce and dairy, a large Deli with a wide variety of cold cut meats, salads and dips, hot chicken, ribs and the like plus a general merchandise dept.

There are **two local Gas Stations**, a very friendly and helpful **CLEM'S HARDWARE HANK** and the **SAFARI LIQUOR** store boasting a large selection of beer, wine & spirits with a focus on Minnesota made products.

#### Cedar Lakes Casino

Just 3 miles north is the newer **CEDAR LAKES CASINO**. Opened in late 2019. It's a beautiful facility. Besides a great place to gamble it has brought to the area, great entertainment, an upscale hotel and a very nice restaurant, Pub 33.

#### Heartland State Trail

Just ¼ mi west and adjacent to Hwy 371 you can jump on the extensive **Heartland State Trail** which also connects to the **Paul Bunyan Trail** and the **Mi-Gi-Zi Trail**. The Mi-Gi-Zi Trail travels the circumference of Pike Bay, a good day's bike ride. Hike, bike and snowmobile. This Trail system goes for more than two hundred miles, running through many northern Minnesota towns that love visitors.

## Location! Location! Location!

### Walker

Just 16 miles south on Hwy 371 is **Walker, "The City on the Bay"**. Great shopping, dining, dancing, great entertainment at Northern Lights Casino, Summer festivals, **Moondance and Walker Bay Live**. Just a fun little town!

### Bemidji

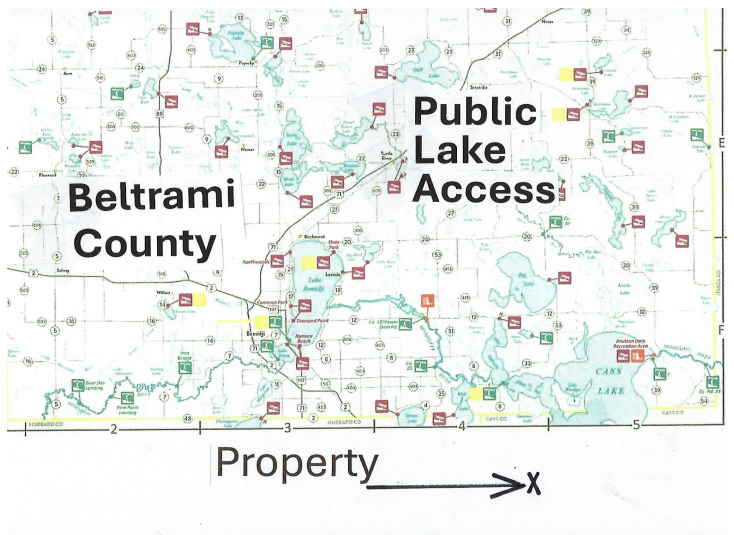
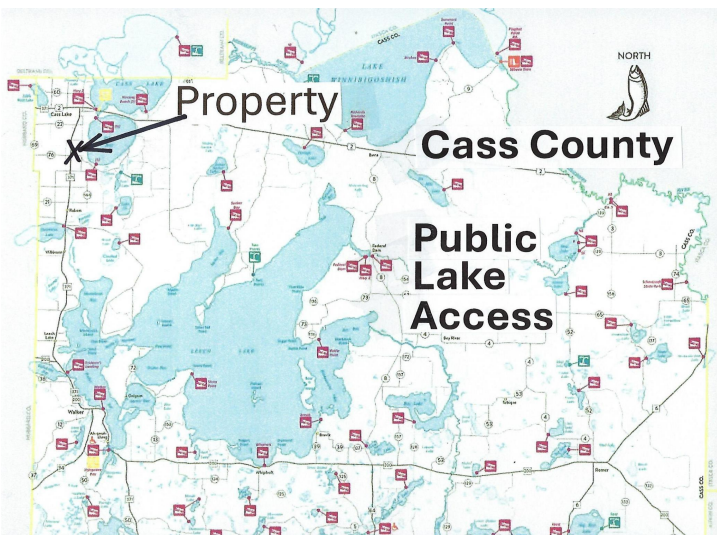
Just 20 minutes west on Hwy 2 is the fast growing city of Bemidji. **Bemidji has it all**, a great selection of local, one of a kind, mom & pop stores and restaurants plus numerous big box stores like Target, Walmart, Menards and Home Depo. Bemidji is the hub of northern Minnesota. You can find most anything in Bemidji, MN.



website: [www.AffinityRealEstate.com](http://www.AffinityRealEstate.com) | email: [info@affinityrealestate.com](mailto:info@affinityrealestate.com) | office: 218-237-3333 | fax:218-237-3377

**Affinity**  
REAL ESTATE INC

**\$55,000**  
MLS 7084177 Land  
Lot 3 Pike Bay Loop  
Cass Lake MN 56633

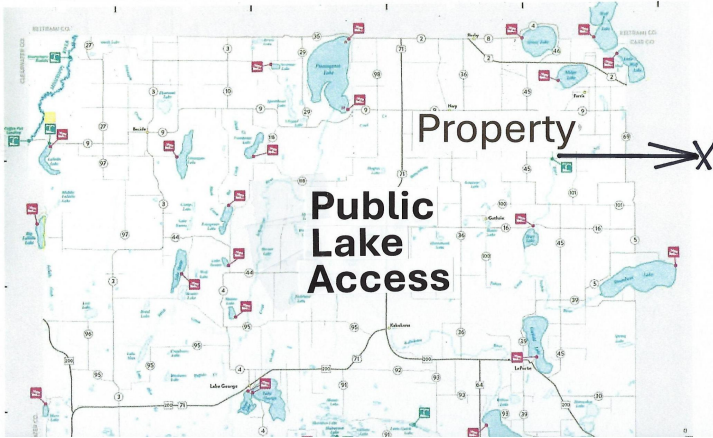


website: [www.AffinityRealEstate.com](http://www.AffinityRealEstate.com) | email: [info@affinityrealestate.com](mailto:info@affinityrealestate.com) | office: 218-237-3333 | fax: 218-237-3377



**\$55,000**  
 MLS 7084177 Land  
 Lot 3 Pike Bay Loop  
 Cass Lake MN 56633

# Hubbard County



website: [www.AffinityRealEstate.com](http://www.AffinityRealEstate.com) | email: [info@affinityrealestate.com](mailto:info@affinityrealestate.com) | office: 218-237-3333 | fax:218-237-3377



**\$55,000**  
MLS 7084177 Land  
Lot 3 Pike Bay Loop  
Cass Lake MN 56633