



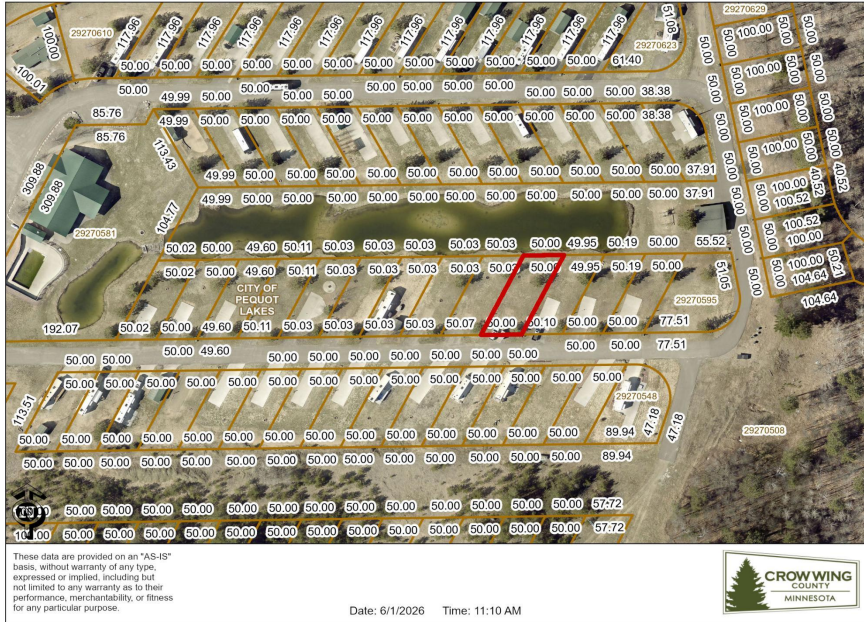
MLS 7084224 Land

\$45,000

0.11 Acres
Finished Lot(s)

28668 Lot 89 Hurtig Road
Pequot Lakes MN 56472

Status: Active



Description:

Own your own Premium RV lot on the pond in this luxury park with the perfect location between Nisswa and Crosslake. Enjoy the amenities of Nisswa, Pequot, the Gull and Whitefish chain of lakes along with World Class Golf courses all around. This lot is connected to water/sewer/electric and is walking distance to the shower and laundry facility

Additional Details:

| | |
|------------------------|--------|
| Lot Acres | 0.11 |
| Lot Dimensions | 50x113 |
| School District | 186 |
| Taxes | \$178 |
| Taxes with Assessments | \$178 |
| Tax Year | 2026 |

Additional Features:

Driving Directions:

From Brainerd, north on 371 to a left on Patriot Ave, to the first left to a left on hurtig road. Gate opening is on the left.



Listed By:
Weichert REALTORS Tower Properties

Affinity Real Estate Inc. participates in the Regional Multiple Listing Service of Minnesota, Inc Broker Reciprocity (sm) program, allowing us to display other broker's listings on our website. All properties are subject to prior sale, change or withdrawal.



Call Affinity Real Estate
218-237-3333
info@affinityrealestate.com



Affinity Real Estate - 600 Park Avenue South - Park Rapids MN 56470



website: www.AffinityRealEstate.com | email: info@affinityrealestate.com | office: 218-237-3333 | fax:218-237-3377



\$45,000
 MLS 7084224 Land
 28668 Lot 89 Hurtig Road
 Pequot Lakes MN 56472

website: www.AffinityRealEstate.com | email: info@affinityrealestate.com | office: 218-237-3333 | fax:218-237-3377



\$45,000

MLS 7084224 Land
28668 Lot 89 Hurtig Road
Pequot Lakes MN 56472