



MLS 7084376 Lake Home

\$499,000

2,482 sq ft
3 bedrooms
2 baths

20439 Continental Court
Bemidji MN 56601

Waterfront: Julia

Status: Active

Description:

Spacious and beautifully maintained home with 50 feet of Exclusive dock/water access to Lake Julia located on desirable Continental Court! Enjoy lake life without the high price of waterfront taxes with your own dock and boat lift already in place on the lake. Easement adjoins this property and is easily navigated by foot or by recreational vehicles. This impressive updated home offers 3 bedrooms and 2 bathrooms, with two bedrooms and a full bath conveniently located on the main level. One of the standout features is the massive sunroom with vaulted ceilings, providing a bright and inviting space to relax year-round. The sunroom opens to a fenced backyard area that connects to the oversized heated detached garage, offering excellent functionality and storage. Outdoor living is exceptional here with a wraparound deck that flows from the front entrance around the home and leads to the patio area—perfect for enjoying fresh air, entertaining guests, or simply taking in the peaceful setting. Inside, you'll find generous living spaces and abundant storage throughout the home. The spacious kitchen features ample cabinetry, while the large dining area provides plenty of room for gatherings. The open-concept upper level living room creates a comfortable atmosphere and offers beautiful views overlooking a back yard deck and Lake Julia. The lower level adds even more usable space with a third bedroom, a huge laundry room, and an oversized storage room that doubles perfectly as a workout area or hobby space. The cozy family room features a gas fireplace and a newly built-in bar, making it the ideal spot for entertaining or relaxing evenings at home. Additional highlights include attached garage, oversized heated detached garage, and two garden sheds—one of which is brand new—**providing plenty of space for tools, toys, and lake gear. Plus tons of updates to include flooring, electrical, and decking to name a few. If you've been waiting for a spacious and elegant home with lake access on beautiful Lake Julia, this property offers the perfect blend of comfort, recreation, and convenience located just a few minutes from Buena Vista ski area, a few minutes to shopping in Bemidji, close to schools and many fishing and recreational lakes. This home is nestled under the mature trees in nature's paradise!

Additional Details:

Year Built 1972
Lot Acres 1.49
Lot Dimensions 200+324
Garage Stalls 5

	Listed By: \$3,972
	Headwaters Realty Services LLC
Taxes with Assessments \$3,972	
<p> <small> Affinity Real Estate Inc. participates in the Regional Multiple Listing Service of Minnesota, Inc Broker Reciprocity (sm) program, allowing us to display other broker's listings on our website. All properties are subject to change or withdrawal. </small> </p>	



Call Affinity Real Estate
218-237-3333
info@affinityrealestate.com



Basement: Block, Egress Window(s), Finished, Full **Fuel:** Natural Gas **Garage:** 5 **Heat:** Baseboard, Forced Air, Fireplace(s) **Sewer:** Private Sewer
Water: Well **Air Conditioning:** Central Air

Driving Directions:

Take Highway A North from Continental Court and turn right



website: www.AffinityRealEstate.com | email: info@affinityrealestate.com | office: 218-237-3333 | fax: 218-237-3377

Affinity
REAL ESTATE INC

\$499,000
MLS 7084376 Lake Home
20439 Continental Court
Bemidji MN 56601



website: www.AffinityRealEstate.com | email: info@affinityrealestate.com | office: 218-237-3333 | fax: 218-237-3377

Affinity
REAL ESTATE INC

\$499,000
MLS 7084376 Lake Home
20439 Continental Court
Bemidji MN 56601



website: www.AffinityRealEstate.com | email: info@affinityrealestate.com | office: 218-237-3333 | fax:218-237-3377

Affinity
REAL ESTATE INC

\$499,000
MLS 7084376 Lake Home
20439 Continental Court
Bemidji MN 56601



website: www.AffinityRealEstate.com | email: info@affinityrealestate.com | office: 218-237-3333 | fax:218-237-3377

Affinity
REAL ESTATE INC

\$499,000
MLS 7084376 Lake Home
20439 Continental Court
Bemidji MN 56601



website: www.AffinityRealEstate.com | email: info@affinityrealestate.com | office: 218-237-3333 | fax:218-237-3377



\$499,000
MLS 7084376 Lake Home
20439 Continental Court
Bemidji MN 56601



website: www.AffinityRealEstate.com | email: info@affinityrealestate.com | office: 218-237-3333 | fax: 218-237-3377

Affinity
REAL ESTATE INC

\$499,000
MLS 7084376 Lake Home
20439 Continental Court
Bemidji MN 56601



website: www.AffinityRealEstate.com | email: info@affinityrealestate.com | office: 218-237-3333 | fax: 218-237-3377

Affinity
REAL ESTATE INC

\$499,000
MLS 7084376 Lake Home
20439 Continental Court
Bemidji MN 56601



website: www.AffinityRealEstate.com | email: info@affinityrealestate.com | office: 218-237-3333 | fax:218-237-3377



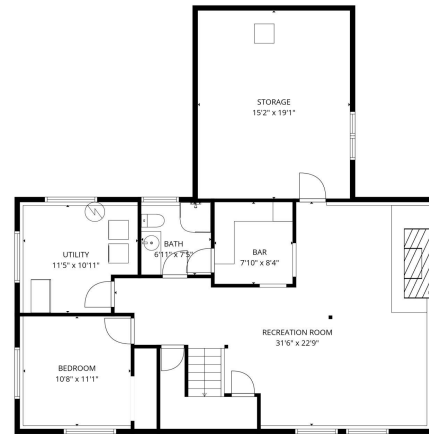
\$499,000
MLS 7084376 Lake Home
20439 Continental Court
Bemidji MN 56601



website: www.AffinityRealEstate.com | email: info@affinityrealestate.com | office: 218-237-3333 | fax:218-237-3377

Affinity
REAL ESTATE INC

\$499,000
MLS 7084376 Lake Home
20439 Continental Court
Bemidji MN 56601



TOTAL: 2482 sq. ft.
 Basement: 951 sq. ft., 1st floor: 1531 sq. ft.
 EXCLUDED AREAS: STORAGE: 291 sq. ft., COVERED DECK: 190 sq. ft., WALLS: 190 sq. ft.
BLUE PLAN CREATED BY L.A. REALTY INC. - MINNEAPOLIS, MN. PLEASE SEE ALL NEIGHBORHOODS.

website: www.AffinityRealEstate.com | email: info@affinityrealestate.com | office: 218-237-3333 | fax: 218-237-3377



\$499,000
 MLS 7084376 Lake Home
 20439 Continental Court
 Bemidji MN 56601

