



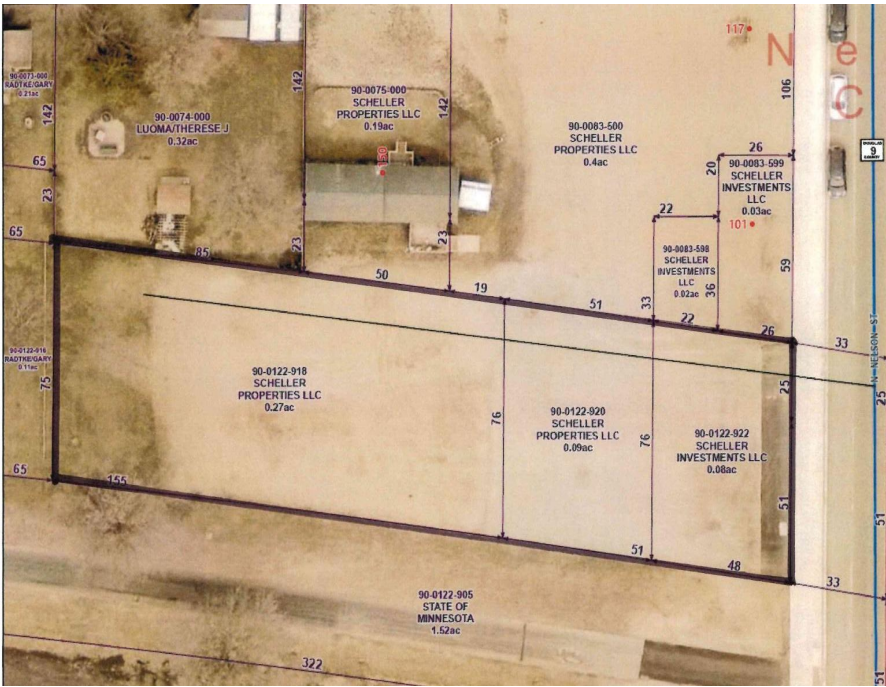
MLS 7084469 Land

**\$65,000**

0.44 Acres  
Finished Lot(s)

XXXX Nelson Street  
Nelson MN 56355

Status: Active



**Description:**

Exceptional commercial development opportunity in the peaceful City of Nelson, conveniently located just 5 minutes from both Alexandria and Osakis along the Central Lakes Bike Trail. This versatile commercial lot offers outstanding potential for a wide range of uses, including storage units, townhomes, apartments, restaurants, pubs, retail businesses, repair shops, professional offices, recreational ventures, and more!

Bring your vision and explore the possibilities. The City of Nelson regulates this and would be more than welcome to hear your ideas and work with you and your plans.

This parcel provides ample space to bring your plans to life, city sewer is available, ALP electric service, natural gas infrastructure.. Additional adjoining land is available .44 AC, MLS # 7084366, expanding development opportunities along the Central Lakes Trail.

The City of Nelson recently completed significant infrastructure improvements, including new paved streets, sidewalks, and storm drainage systems in 2024, further enhancing the area's appeal and accessibility. Bordering the Central Lakes Trail, this location benefits from year-round traffic from cyclists, snowmobilers, and outdoor enthusiasts.

Don't miss this rare opportunity to invest in a revitalized and strategically located commercial property!

**Additional Details:**

Lot Acres	0.44
Lot Dimensions	76x253x75x254
School District	206
Taxes	\$234
Taxes with Assessments	\$234
Tax Year	2026

**Additional Features:**

**Driving Directions:**

From Co Rd 82 to the Nelson corner, left on Nelson St. Property on the left bordering along the northside of Century 21 First Realty, Inc.

Affinity Real Estate Inc. participates in the Regional Multiple Listing Service of Minnesota, Inc Broker Reciprocity (sm) program, allowing us to display other broker's listings on our website. All properties are subject to prior sale, change or withdrawal.



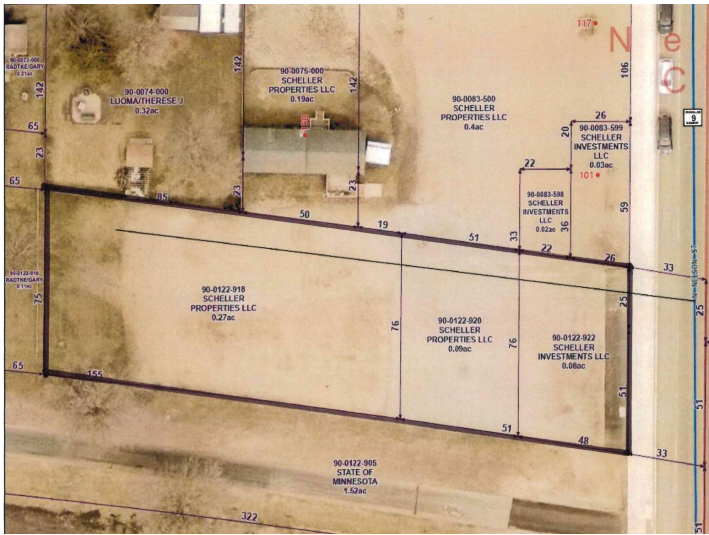
Call Affinity Real Estate

**218-237-3333**

[info@affinityrealestate.com](mailto:info@affinityrealestate.com)



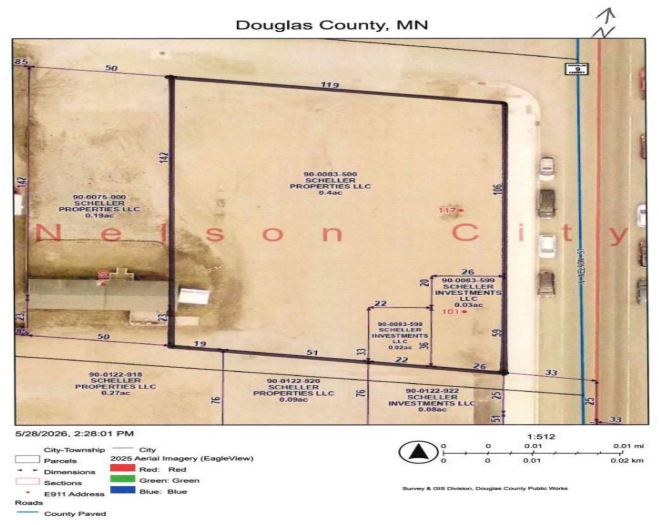
Affinity Real Estate - 600 Park Avenue South - Park Rapids MN 56470



website: [www.AffinityRealEstate.com](http://www.AffinityRealEstate.com) | email: [info@affinityrealestate.com](mailto:info@affinityrealestate.com) | office: 218-237-3333 | fax:218-237-3377



**\$65,000**  
MLS 7084469 Land  
XXXX Nelson Street  
Nelson MN 56355



website: [www.AffinityRealEstate.com](http://www.AffinityRealEstate.com) | email: [info@affinityrealestate.com](mailto:info@affinityrealestate.com) | office: 218-237-3333 | fax:218-237-3377



**\$65,000**  
 MLS 7084469 Land  
 XXXX Nelson Street  
 Nelson MN 56355