



MLS 7084571 Commercial

\$0

305 Washington Street
Brainerd MN 56401

Status: Active

Description:

Join a well-positioned 5-tenant strip center at one of Brainerd's busiest intersections—the Walgreens stoplight along the Washington Street/Hwy 210 corridor. This end-cap office space offers 5 private offices, an open workspace and reception area. Enjoy excellent exposure, convenient access, and a prime opportunity to capture steady local and commuter traffic.

Additional Details:

Year Built	1960
Lot Acres	0.48
Lot Dimensions	140x150
School District	181
Taxes	(unreported)
Taxes with Assessments	(unreported)
Tax Year	2026

Additional Features:

Fuel: Natural Gas **Heat:** Forced Air **Sewer:** City Sewer/Connected **Water:** City Water/Connected **Air Conditioning:** Central Air

Driving Directions:

From Hwy 210/371 intersection in Baxter - East on Washington Street (Hwy 210) - Property is the SE corner of Washington Street and NW 4th Street



Listed By:
Close-Converse Commercial Prop

Affinity Real Estate Inc. participates in the Regional Multiple Listing Service of Minnesota, Inc Broker Reciprocity (sm) program, allowing us to display other broker's listings on our website. All properties are subject to prior sale, change or withdrawal.



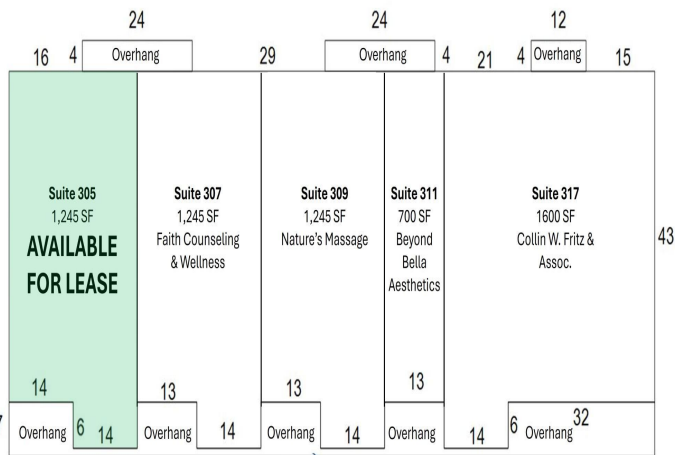
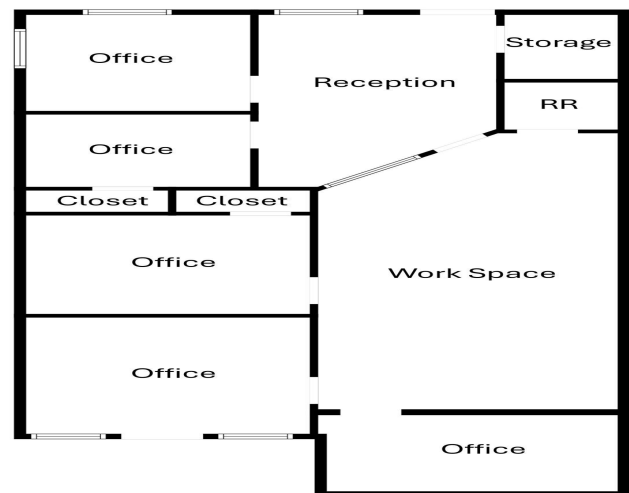
Call Affinity Real Estate

218-237-3333

info@affinityrealestate.com



Affinity Real Estate - 600 Park Avenue South - Park Rapids MN 56470



website: www.AffinityRealEstate.com | email: info@affinityrealestate.com | office: 218-237-3333 | fax: 218-237-3377



\$0
 MLS 7084571 Commercial
 305 Washington Street
 Brainerd MN 56401



website: www.AffinityRealEstate.com | email: info@affinityrealestate.com | office: 218-237-3333 | fax:218-237-3377



\$0
MLS 7084571 Commercial
305 Washington Street
Brainerd MN 56401



website: www.AffinityRealEstate.com | email: info@affinityrealestate.com | office: 218-237-3333 | fax:218-237-3377



\$0
MLS 7084571 Commercial
305 Washington Street
Brainerd MN 56401