



MLS 7084627 Lake Home

\$280,000

1,100 sq ft
2 bedrooms
1 baths

550 Shady Shores Trail
Pine River MN 56474

Waterfront: Hand Lake (Ponto Lake Twp.) (11024200)

Status: Active

Description:

Start making memories on highly sought after Hand Lake. Beautiful hard sand swimming and fishing right off the dock. Panoramic views from the porch overlooking this spectacular location on the lake. Nestled in mature trees, this well-loved lake home is a stones throw from the water's edge, yet still offers a finished walk-out lower level. Extra space for guests in the newly finished carriage house. Storage shed, workshop, and still plenty of room for a garage with space to spare for boat/toy parking. Peace and tranquility on a quiet drive, but still close enough to town for all of the shopping, dining, and activities in lovely Pine River.

Additional Details:

Year Built	1969
Lot Acres	0.65
Lot Dimensions	100'x270'x120'x250'
School District	2174
Taxes	\$1,002
Taxes with Assessments	\$1,002
Tax Year	2026

Additional Features:

Basement: Block, Walkout **Fuel:** Electric, Propane **Heat:** Hot Water **Sewer:** Private Sewer **Water:** Well **Air Conditioning:** Central Air

Driving Directions:

FROM PINE RIVER GO NORTH ON HWY 84 FOR 9.7 MILES TO EAST ON CR #49 FOR 2.2 MILES TO NORTH ON SHADY SHORES DRIVE TO LEFT ON SHADY SHORES TRAIL TO #550.



Listed By:
LPT Realty, LLC

Affinity Real Estate Inc. participates in the Regional Multiple Listing Service of Minnesota, Inc Broker Reciprocity (sm) program, allowing us to display other broker's listings on our website. All properties are subject to prior sale, change or withdrawal.



Call Affinity Real Estate

218-237-3333

info@affinityrealestate.com



Affinity Real Estate - 600 Park Avenue South - Park Rapids MN 56470



website: www.AffinityRealEstate.com | email: info@affinityrealestate.com | office: 218-237-3333 | fax:218-237-3377



\$280,000
MLS 7084627 Lake Home
550 Shady Shores Trail
Pine River MN 56474



website: www.AffinityRealEstate.com | email: info@affinityrealestate.com | office: 218-237-3333 | fax:218-237-3377



\$280,000
MLS 7084627 Lake Home
550 Shady Shores Trail
Pine River MN 56474



website: www.AffinityRealEstate.com | email: info@affinityrealestate.com | office: 218-237-3333 | fax:218-237-3377



\$280,000
MLS 7084627 Lake Home
550 Shady Shores Trail
Pine River MN 56474



website: www.AffinityRealEstate.com | email: info@affinityrealestate.com | office: 218-237-3333 | fax:218-237-3377



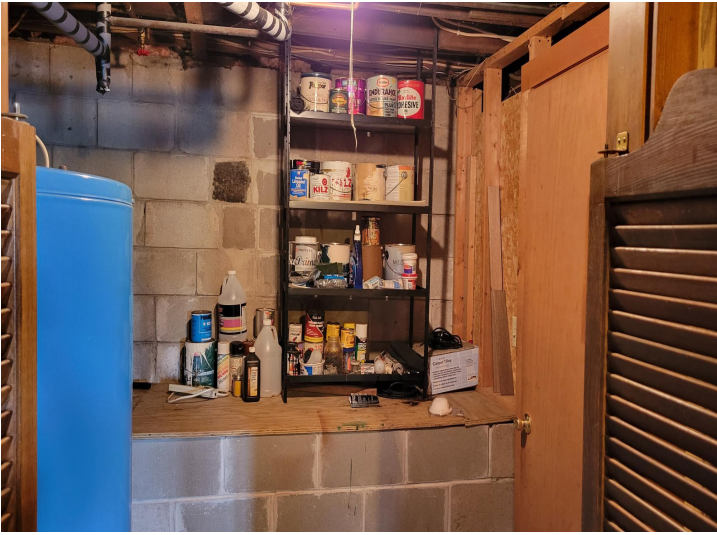
\$280,000
MLS 7084627 Lake Home
550 Shady Shores Trail
Pine River MN 56474



website: www.AffinityRealEstate.com | email: info@affinityrealestate.com | office: 218-237-3333 | fax:218-237-3377



\$280,000
MLS 7084627 Lake Home
550 Shady Shores Trail
Pine River MN 56474



website: www.AffinityRealEstate.com | email: info@affinityrealestate.com | office: 218-237-3333 | fax:218-237-3377



\$280,000
MLS 7084627 Lake Home
550 Shady Shores Trail
Pine River MN 56474