



MLS 7084667 Lake Home

**\$739,900**

3,860 sq ft  
4 bedrooms  
3 baths

17079 Paw Print Drive  
Laporte MN 56461

Waterfront: Minnie

Status: Active

**Description:**

Welcome to this private executive retreat. 12 private acres with 384 ft of lakeshore with sandy bottom and excellent swimming, boating, and fishing. Wonderfully updated 4 bedroom , 3 bath home with open concept. Newly remodeled kitchen with large granite island and maple cabinetry, custom wood counter top, maple floors and vaulted ceilings and solid doors..Large entrance with added entry storage and coat rack and walk into amazing views. Living room has a new wood beam and tongue-and-groove ceiling freshly painted with a custom electric fireplace entertainment center. Owners suite has built-in king bed, full wall desk and storage. Private owners suite with walk-in closet and jacuzzi tub with separate shower. Bedrooms upstairs all have new carpet. Lower level has fresh paint throughout and new carpet in bedrooms and an added door and wall to create an extra bonus room. Lower level family room has new luxury vinyl plank flooring. High efficiency furnace and new dishwasher, and washer and dryer set. Don't forget the high speed fiber internet for remote working or staying connected.Outside, an expansive lakeside deck and hot tub create the perfect setting for gathering with family and friends or simply taking in the peaceful surroundings. A two car garage and large detached heated shop 40 x30 with wood stove provides ample space for boats, ATVs, snowmobiles, projects, and storage.Bordering trails and adjacent to hundreds of acres of public land, this property offers direct access to some of northern Minnesota's best outdoor recreation. Conveniently located near Lake George and Itasca State Park, and within easy reach of Walker, Bemidji, and Park Rapids, you'll enjoy the perfect balance of accessibility and seclusion.

**Additional Details:**

Year Built	1998
Lot Acres	11.84
Lot Dimensions	1337x398
Garage Stalls	4
School District	306
Taxes	\$4,822
Taxes with Assessments	\$4,822
Tax Year	2025

**Additional Features:**

**Fuel:** Electric, Other **Heat:** Dual Fuel/Off Peak, Forced Air, Heat Pump, Other



Listed By:  
ERA Prospera Real Estate  
From Park Rapids, east on Hwy 34 to a left turn onto County Rd 4 just south of Hwy 34, follow County Rd 4 to Lake George. In Lake George follow County Rd 4 north for approx 4 miles to right onto Paw Print Dr. Property is first driveway on right. Fire #17079  
Affinity Real Estate Inc. participates in the Regional Multiple Listing Service of Minnesota, Inc Broker Reciprocity (sm) program, allowing us to display other broker's listings on our website. All properties are subject to prior sale, change or withdrawal.



**Call Affinity Real Estate**

**218-237-3333**

**info@affinityrealestate.com**



**Affinity Real Estate - 600 Park Avenue South - Park Rapids MN 56470**



website: [www.AffinityRealEstate.com](http://www.AffinityRealEstate.com) | email: [info@affinityrealestate.com](mailto:info@affinityrealestate.com) | office: 218-237-3333 | fax: 218-237-3377

**Affinity**  
REAL ESTATE INC

**\$739,900**  
MLS 7084667 Lake Home  
17079 Paw Print Drive  
Laporte MN 56461



website: [www.AffinityRealEstate.com](http://www.AffinityRealEstate.com) | email: [info@affinityrealestate.com](mailto:info@affinityrealestate.com) | office: 218-237-3333 | fax:218-237-3377



**\$739,900**  
MLS 7084667 Lake Home  
17079 Paw Print Drive  
Laporte MN 56461



website: [www.AffinityRealEstate.com](http://www.AffinityRealEstate.com) | email: [info@affinityrealestate.com](mailto:info@affinityrealestate.com) | office: 218-237-3333 | fax: 218-237-3377

**Affinity**  
REAL ESTATE INC

**\$739,900**  
MLS 7084667 Lake Home  
17079 Paw Print Drive  
Laporte MN 56461



website: [www.AffinityRealEstate.com](http://www.AffinityRealEstate.com) | email: [info@affinityrealestate.com](mailto:info@affinityrealestate.com) | office: 218-237-3333 | fax:218-237-3377



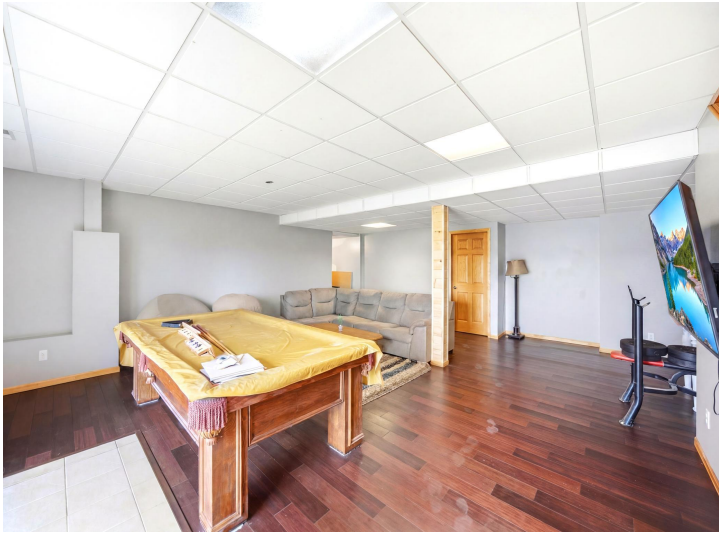
**\$739,900**  
MLS 7084667 Lake Home  
17079 Paw Print Drive  
Laporte MN 56461



website: [www.AffinityRealEstate.com](http://www.AffinityRealEstate.com) | email: [info@affinityrealestate.com](mailto:info@affinityrealestate.com) | office: 218-237-3333 | fax:218-237-3377

**Affinity**  
REAL ESTATE INC

**\$739,900**  
MLS 7084667 Lake Home  
17079 Paw Print Drive  
Laporte MN 56461



website: [www.AffinityRealEstate.com](http://www.AffinityRealEstate.com) | email: [info@affinityrealestate.com](mailto:info@affinityrealestate.com) | office: 218-237-3333 | fax:218-237-3377



**\$739,900**  
MLS 7084667 Lake Home  
17079 Paw Print Drive  
Laporte MN 56461



website: [www.AffinityRealEstate.com](http://www.AffinityRealEstate.com) | email: [info@affinityrealestate.com](mailto:info@affinityrealestate.com) | office: 218-237-3333 | fax:218-237-3377



**\$739,900**  
MLS 7084667 Lake Home  
17079 Paw Print Drive  
Laporte MN 56461



website: [www.AffinityRealEstate.com](http://www.AffinityRealEstate.com) | email: [info@affinityrealestate.com](mailto:info@affinityrealestate.com) | office: 218-237-3333 | fax:218-237-3377



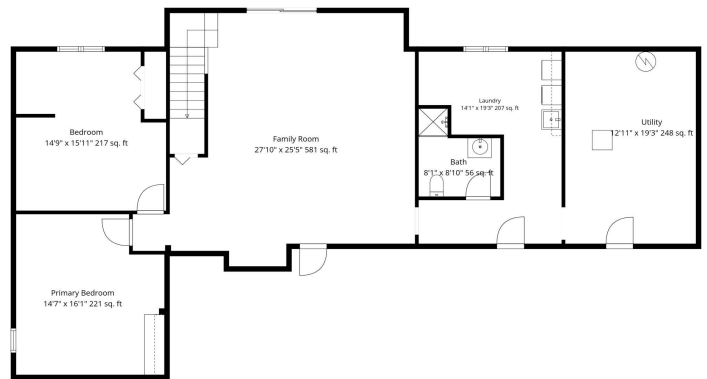
**\$739,900**  
MLS 7084667 Lake Home  
17079 Paw Print Drive  
Laporte MN 56461



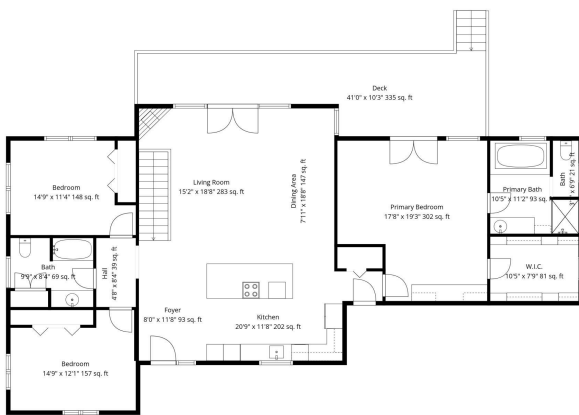
website: [www.AffinityRealEstate.com](http://www.AffinityRealEstate.com) | email: [info@affinityrealestate.com](mailto:info@affinityrealestate.com) | office: 218-237-3333 | fax:218-237-3377



**\$739,900**  
MLS 7084667 Lake Home  
17079 Paw Print Drive  
Laporte MN 56461



**TOTAL: 3085 sq. ft.**  
 Basement: 1339 sq. ft., 1st floor: 1746 sq. ft.  
 EXCLUDED AREAS: UTILITY: 248 sq. ft., DECK: 335 sq. ft., WALLS: 210 sq. ft.



**TOTAL: 3085 sq. ft.**  
 Basement: 1339 sq. ft., 1st floor: 1746 sq. ft.  
 EXCLUDED AREAS: UTILITY: 248 sq. ft., DECK: 335 sq. ft., WALLS: 210 sq. ft.



**TOTAL: 3085 sq. ft.**  
 Basement: 1339 sq. ft., 1st floor: 1746 sq. ft.  
 EXCLUDED AREAS: UTILITY: 248 sq. ft., DECK: 335 sq. ft., WALLS: 210 sq. ft.

website: [www.AffinityRealEstate.com](http://www.AffinityRealEstate.com) | email: [info@affinityrealestate.com](mailto:info@affinityrealestate.com) | office: 218-237-3333 | fax: 218-237-3377



**\$739,900**  
 MLS 7084667 Lake Home  
 17079 Paw Print Drive  
 Laporte MN 56461

website: [www.AffinityRealEstate.com](http://www.AffinityRealEstate.com) | email: [info@affinityrealestate.com](mailto:info@affinityrealestate.com) | office: 218-237-3333 | fax:218-237-3377



**\$739,900**

MLS 7084667 Lake Home  
17079 Paw Print Drive  
Laporte MN 56461