



MLS 7084805 Residential

\$229,000

2,016 sq ft
3 bedrooms
2 baths

824 Irving Avenue
Wadena MN 56482

Status: Active

Description:

Welcome to this move-in ready 3 Bed 2 Bath home on a large corner lot! Many updates have been done throughout. Nice open floor plan w/windows for good natural lighting. 2 beds, full bath, eat-in kitchen, and living room on the main level. 1 bed, 3/4 bath, living space, and laundry on lower level. Big backyard to enjoy w/pergola, patio, firepit, clothesline, and storage shed. 2 stall attached garage. It's time to move!

Additional Details:

Year Built	1963
Lot Acres	0.337
Lot Dimensions	80 183 80 183
Garage Stalls	2
School District	2155
Taxes	\$1,744
Taxes with Assessments	\$1,744
Tax Year	2026

Additional Features:

Fuel: Electric, Natural Gas **Heat:** Baseboard, Boiler, Ductless Mini-Split

Driving Directions:

From Hwy 29 & Jefferson st S in Wadena take Jefferson st to the South till you come to Irving Ave SW and take a Right. Follow Irving to the house and sign on your Right.



Listed By:
Edina Realty, Inc.

Affinity Real Estate Inc. participates in the Regional Multiple Listing Service of Minnesota, Inc Broker Reciprocity (sm) program, allowing us to display other broker's listings on our website. All properties are subject to prior sale, change or withdrawal.



Call Affinity Real Estate

218-237-3333

info@affinityrealestate.com



Affinity Real Estate - 600 Park Avenue South - Park Rapids MN 56470



website: www.AffinityRealEstate.com | email: info@affinityrealestate.com | office: 218-237-3333 | fax: 218-237-3377

Affinity
REAL ESTATE INC

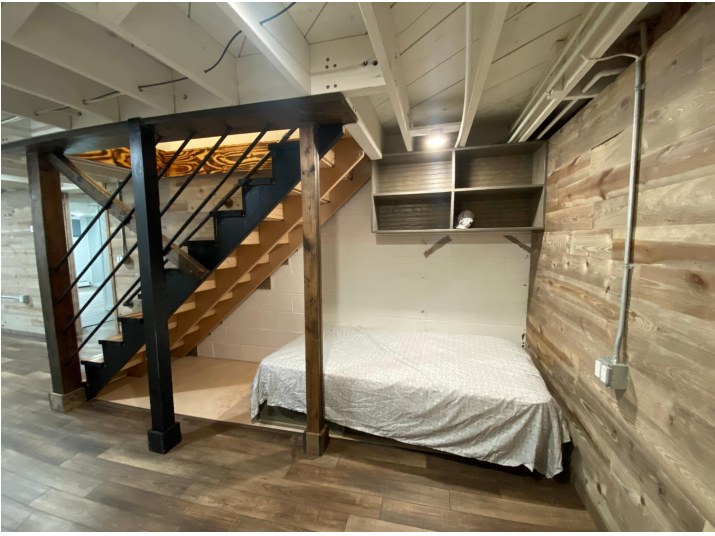
\$229,000
MLS 7084805 Residential
824 Irving Avenue
Wadena MN 56482



website: www.AffinityRealEstate.com | email: info@affinityrealestate.com | office: 218-237-3333 | fax:218-237-3377

Affinity
REAL ESTATE INC

\$229,000
MLS 7084805 Residential
824 Irving Avenue
Wadena MN 56482



website: www.AffinityRealEstate.com | email: info@affinityrealestate.com | office: 218-237-3333 | fax:218-237-3377



\$229,000
MLS 7084805 Residential
824 Irving Avenue
Wadena MN 56482



website: www.AffinityRealEstate.com | email: info@affinityrealestate.com | office: 218-237-3333 | fax: 218-237-3377



\$229,000
MLS 7084805 Residential
824 Irving Avenue
Wadena MN 56482



website: www.AffinityRealEstate.com | email: info@affinityrealestate.com | office: 218-237-3333 | fax: 218-237-3377



\$229,000
MLS 7084805 Residential
824 Irving Avenue
Wadena MN 56482



website: www.AffinityRealEstate.com | email: info@affinityrealestate.com | office: 218-237-3333 | fax:218-237-3377



\$229,000
MLS 7084805 Residential
824 Irving Avenue
Wadena MN 56482