



MLS 7084809 Lake Home

**\$289,900**

1,071 sq ft  
2 bedrooms  
1 baths

8612 Paradise Beach Road  
Brainerd MN 56401

Waterfront: South Long

Status: Active

**Description:**

Enjoy quiet living with shared lake access and a roll-in dock included, conveniently located just across the street. Completely gutted and remodeled in 2016, this charming home was thoughtfully updated from top to bottom, with no detail overlooked. Custom hickory cabinetry and Gypsum flooring throughout adds warmth, character, and quality craftsmanship. The home offers beautiful views of the lake from the front and peaceful wooded scenery in the backyard, creating the perfect balance of water and nature. A standout feature is the 24' x 14' guest house, which is insulated and heated for year-round enjoyment. It includes an electric fireplace, refrigerator, TV, and queen-size bunk beds, making it ideal for hosting family and friends. Additional sleeping space is available in the 20' x 8' seasonal bunk house, which accommodates three twin beds. Whether you're looking for a year-round residence, a weekend getaway, or a property with plenty of room for visitors, this lake-area home offers comfort, charm, and exceptional versatility.

**Additional Details:**

Year Built	1940
Lot Acres	0.26
Lot Dimensions	128x148x175x159
Garage Stalls	1
School District	181
Taxes	\$1,202
Taxes with Assessments	\$1,202
Tax Year	2025

**Additional Features:**

**Basement:** Crawl Space **Fuel:** Propane **Garage:** 1 **Heat:** In-Floor Heating **Sewer:** Private Sewer **Water:** Private **Air Conditioning:** None

**Driving Directions:**

CR 22, left on Paradise Beach Road to home.



Listed By:  
Coldwell Banker Realty

Affinity Real Estate Inc. participates in the Regional Multiple Listing Service of Minnesota, Inc Broker Reciprocity (sm) program, allowing us to display other broker's listings on our website. All properties are subject to prior sale, change or withdrawal.



**Call Affinity Real Estate**

**218-237-3333**

**info@affinityrealestate.com**



**Affinity Real Estate - 600 Park Avenue South - Park Rapids MN 56470**



website: [www.AffinityRealEstate.com](http://www.AffinityRealEstate.com) | email: [info@affinityrealestate.com](mailto:info@affinityrealestate.com) | office: 218-237-3333 | fax:218-237-3377



**\$289,900**  
MLS 7084809 Lake Home  
8612 Paradise Beach Road  
Brainerd MN 56401



website: [www.AffinityRealEstate.com](http://www.AffinityRealEstate.com) | email: [info@affinityrealestate.com](mailto:info@affinityrealestate.com) | office: 218-237-3333 | fax:218-237-3377

**Affinity**  
REAL ESTATE INC

**\$289,900**  
MLS 7084809 Lake Home  
8612 Paradise Beach Road  
Brainerd MN 56401



website: [www.AffinityRealEstate.com](http://www.AffinityRealEstate.com) | email: [info@affinityrealestate.com](mailto:info@affinityrealestate.com) | office: 218-237-3333 | fax:218-237-3377



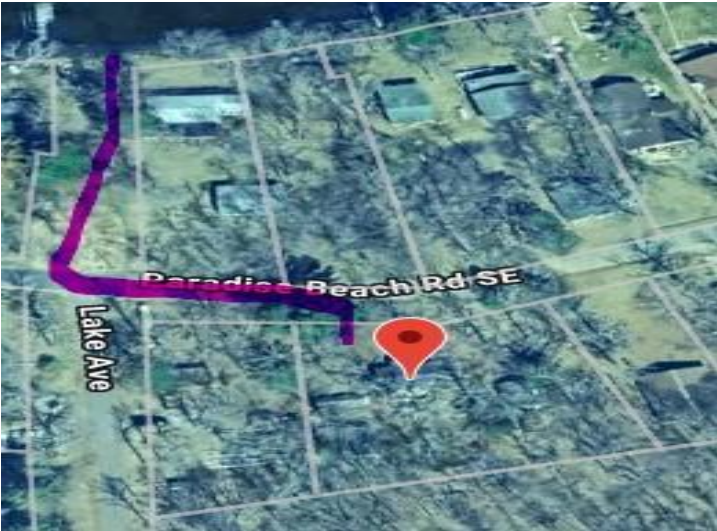
**\$289,900**  
MLS 7084809 Lake Home  
8612 Paradise Beach Road  
Brainerd MN 56401



website: [www.AffinityRealEstate.com](http://www.AffinityRealEstate.com) | email: [info@affinityrealestate.com](mailto:info@affinityrealestate.com) | office: 218-237-3333 | fax: 218-237-3377

**Affinity**  
REAL ESTATE INC

**\$289,900**  
MLS 7084809 Lake Home  
8612 Paradise Beach Road  
Brainerd MN 56401



website: [www.AffinityRealEstate.com](http://www.AffinityRealEstate.com) | email: [info@affinityrealestate.com](mailto:info@affinityrealestate.com) | office: 218-237-3333 | fax:218-237-3377



**\$289,900**  
MLS 7084809 Lake Home  
8612 Paradise Beach Road  
Brainerd MN 56401



website: [www.AffinityRealEstate.com](http://www.AffinityRealEstate.com) | email: [info@affinityrealestate.com](mailto:info@affinityrealestate.com) | office: 218-237-3333 | fax:218-237-3377

**Affinity**  
REAL ESTATE INC

**\$289,900**  
MLS 7084809 Lake Home  
8612 Paradise Beach Road  
Brainerd MN 56401