



MLS 7084957 Residential

**\$319,900**

1,766 sq ft  
3 bedrooms  
2 baths

18227 US Highway 169  
Grand Rapids MN 55744

Status: Active

**Description:**

Set on 1.27 acres just south of Grand Rapids, this classic 3 bedroom, 2 bath home offers eye-catching curb appeal in an unbeatable location near Pokegama Lake landings and popular lakeside restaurants. The main floor features a bright living room, open kitchen and dining area with access to the deck and fenced backyard, two bedrooms, and a full bath. The walkout lower level highlights new flooring, a family room with access to the patio and hot tub, a bedroom, and an impressive 0.75 bath featuring a huge walk-in shower with dual shower heads and a sauna. Outside, enjoy a large fenced backyard, an attached single-stall garage, and a massive 30x50 detached garage offering endless storage and workspace possibilities.

**Additional Details:**

Year Built	1984
Lot Acres	1.27
Lot Dimensions	Irregular
Garage Stalls	3
School District	318
Taxes	\$1,777
Taxes with Assessments	\$1,858
Tax Year	2026

**Additional Features:**

**Basement:** Block, Full, Walkout **Fuel:** Propane **Garage:** 3 **Heat:** Forced Air **Sewer:** Private Sewer, Septic System Compliant - Yes **Water:** Private  
**Air Conditioning:** Central Air

**Driving Directions:**

Hwy 169 S to property on R



Listed By:  
COLDWELL BANKER NORTHWOODS

Affinity Real Estate Inc. participates in the Regional Multiple Listing Service of Minnesota, Inc Broker Reciprocity (sm) program, allowing us to display other broker's listings on our website. All properties are subject to prior sale, change or withdrawal.



Call Affinity Real Estate

**218-237-3333**

[info@affinityrealestate.com](mailto:info@affinityrealestate.com)



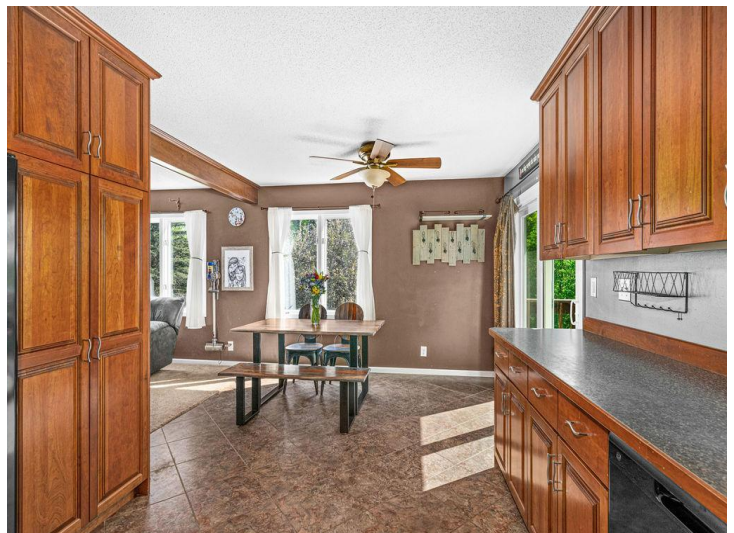
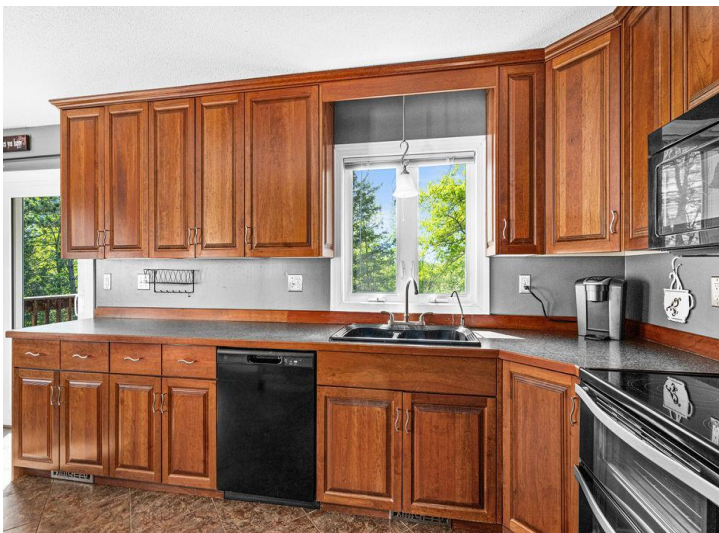
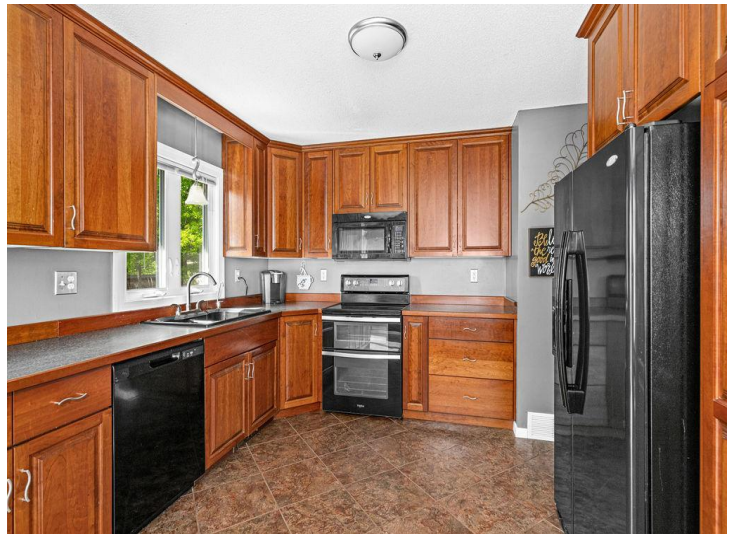
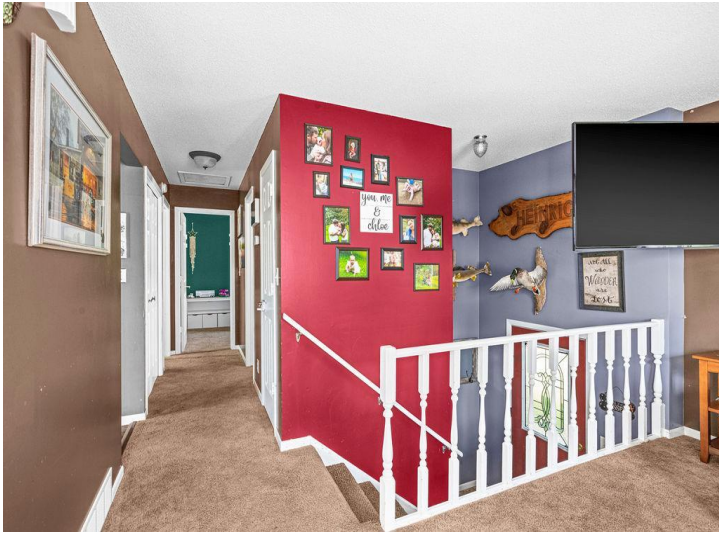
Affinity Real Estate - 600 Park Avenue South - Park Rapids MN 56470



website: [www.AffinityRealEstate.com](http://www.AffinityRealEstate.com) | email: [info@affinityrealestate.com](mailto:info@affinityrealestate.com) | office: 218-237-3333 | fax:218-237-3377

**Affinity**  
REAL ESTATE INC

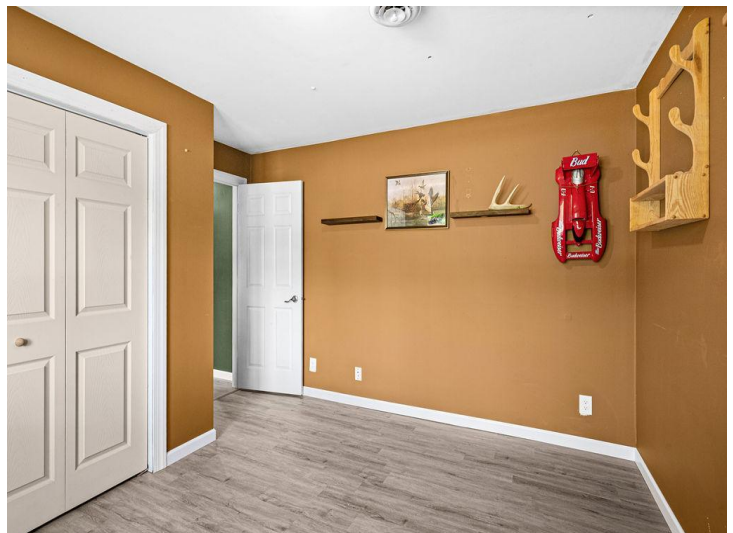
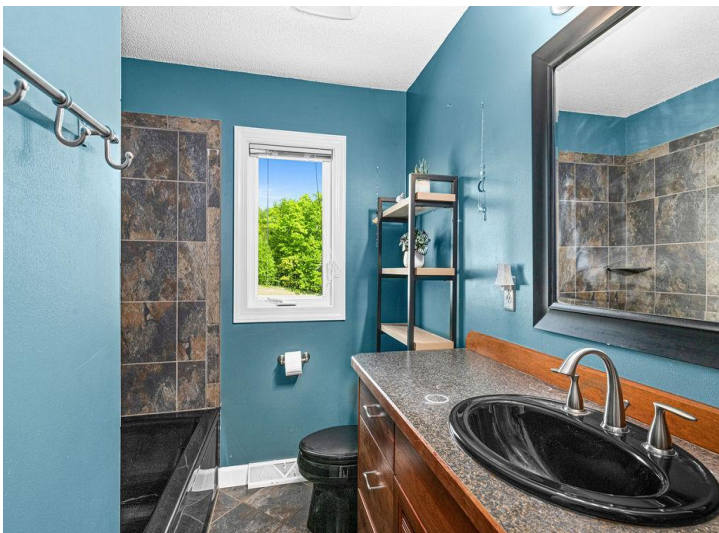
**\$319,900**  
MLS 7084957 Residential  
18227 US Highway 169  
Grand Rapids MN 55744



website: [www.AffinityRealEstate.com](http://www.AffinityRealEstate.com) | email: [info@affinityrealestate.com](mailto:info@affinityrealestate.com) | office: 218-237-3333 | fax:218-237-3377



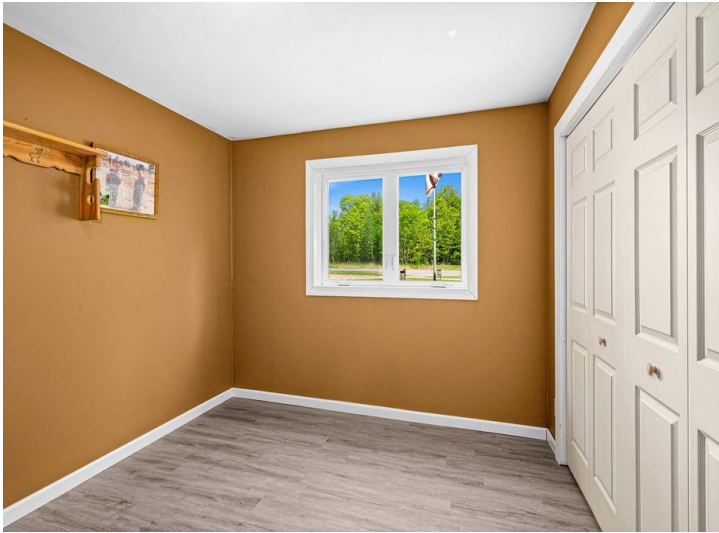
**\$319,900**  
MLS 7084957 Residential  
18227 US Highway 169  
Grand Rapids MN 55744



website: [www.AffinityRealEstate.com](http://www.AffinityRealEstate.com) | email: [info@affinityrealestate.com](mailto:info@affinityrealestate.com) | office: 218-237-3333 | fax: 218-237-3377

**Affinity**  
REAL ESTATE INC

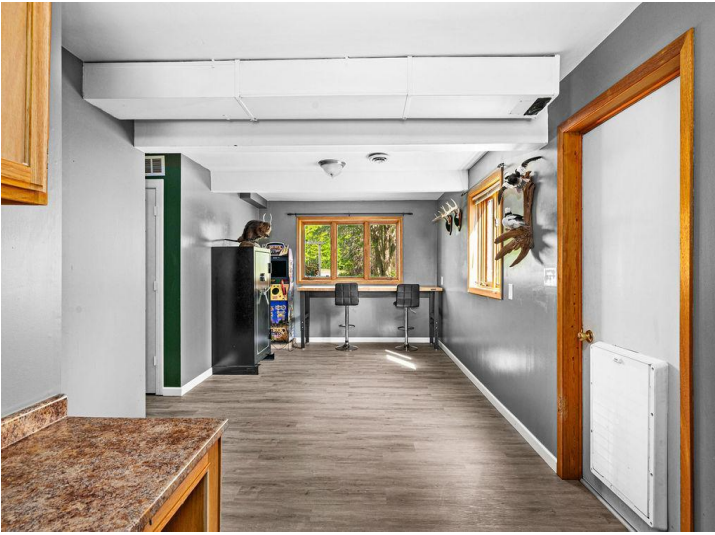
**\$319,900**  
MLS 7084957 Residential  
18227 US Highway 169  
Grand Rapids MN 55744



website: [www.AffinityRealEstate.com](http://www.AffinityRealEstate.com) | email: [info@affinityrealestate.com](mailto:info@affinityrealestate.com) | office: 218-237-3333 | fax: 218-237-3377

**Affinity**  
REAL ESTATE INC

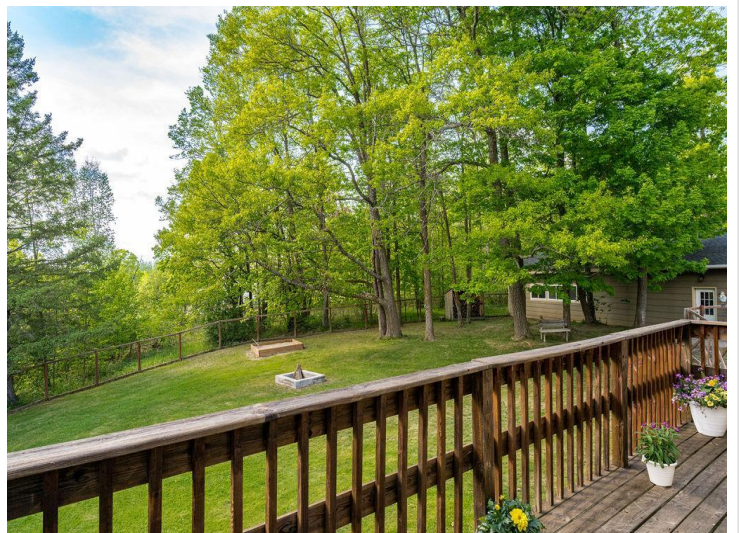
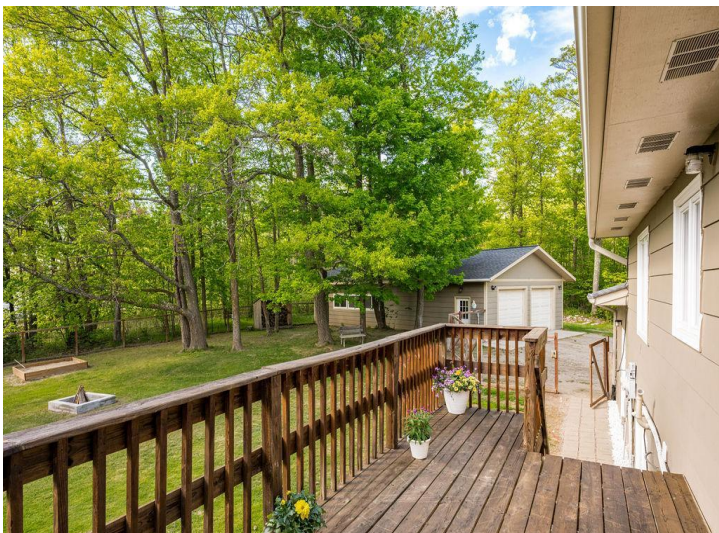
**\$319,900**  
MLS 7084957 Residential  
18227 US Highway 169  
Grand Rapids MN 55744



website: [www.AffinityRealEstate.com](http://www.AffinityRealEstate.com) | email: [info@affinityrealestate.com](mailto:info@affinityrealestate.com) | office: 218-237-3333 | fax: 218-237-3377



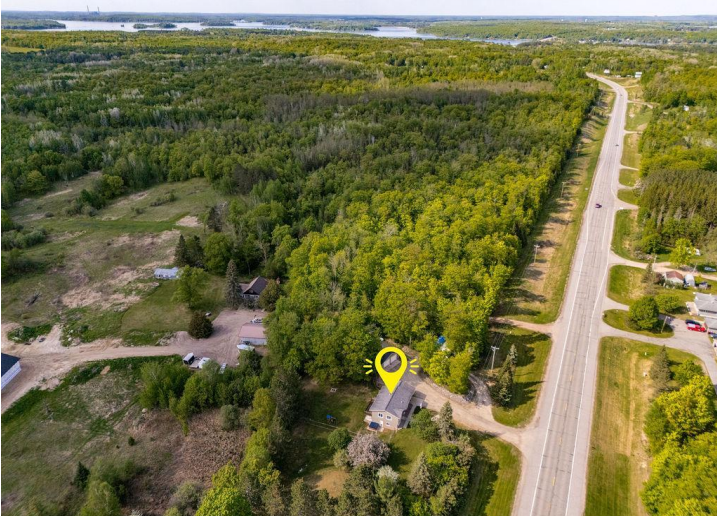
**\$319,900**  
MLS 7084957 Residential  
18227 US Highway 169  
Grand Rapids MN 55744



website: [www.AffinityRealEstate.com](http://www.AffinityRealEstate.com) | email: [info@affinityrealestate.com](mailto:info@affinityrealestate.com) | office: 218-237-3333 | fax: 218-237-3377

**Affinity**  
REAL ESTATE INC

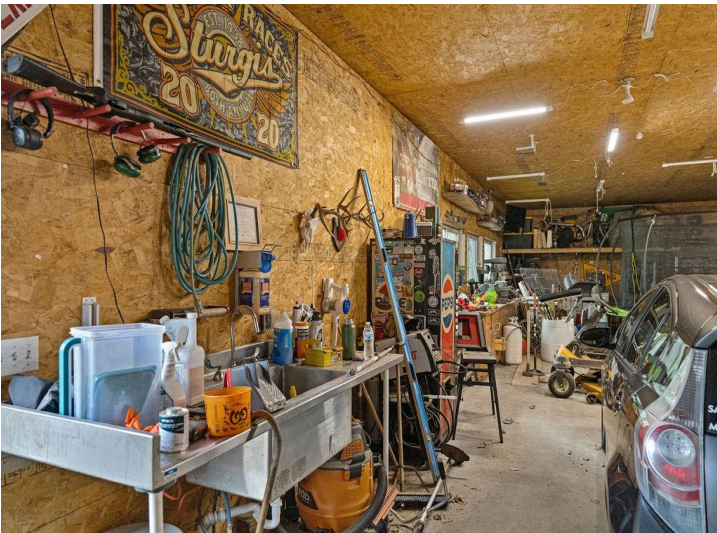
**\$319,900**  
MLS 7084957 Residential  
18227 US Highway 169  
Grand Rapids MN 55744



website: [www.AffinityRealEstate.com](http://www.AffinityRealEstate.com) | email: [info@affinityrealestate.com](mailto:info@affinityrealestate.com) | office: 218-237-3333 | fax:218-237-3377



**\$319,900**  
MLS 7084957 Residential  
18227 US Highway 169  
Grand Rapids MN 55744



website: [www.AffinityRealEstate.com](http://www.AffinityRealEstate.com) | email: [info@affinityrealestate.com](mailto:info@affinityrealestate.com) | office: 218-237-3333 | fax:218-237-3377



**\$319,900**  
MLS 7084957 Residential  
18227 US Highway 169  
Grand Rapids MN 55744