



MLS 7084968 Land

\$169,900

40 Acres

Other

40781 County 2

Bagley MN 56621

Status: Active

Description:

Escape to the north woods with this exceptional 40-acre retreat just north of Shevlin. Meticulously maintained and thoughtfully developed for outdoor enthusiasts, this property features an extensive trail system winding throughout the acreage, established food plots, and strategically placed enclosed deer stands ready for your next hunt.

The land offers beautiful rolling topography along with an excellent mix of mature trees, creating ideal habitat for wildlife and endless recreational opportunities. Also included is a cozy cabin complete with a wood stove — the perfect spot to relax after a day outdoors.

Whether you're looking for a prime hunting property, recreational getaway, or future building site, this one offers privacy, seclusion, and a true up-north experience.

Additional Details:

| | |
|------------------------|-----------|
| Year Built | 2005 |
| Lot Acres | 40 |
| Lot Dimensions | 1320x1320 |
| School District | 2311 |
| Taxes | \$550 |
| Taxes with Assessments | \$568 |
| Tax Year | 2025 |

Additional Features:

Driving Directions:

North of Shelvin on CTY 2 for a few miles to #40781



Listed By:
Grimes Realty

Affinity Real Estate Inc. participates in the Regional Multiple Listing Service of Minnesota, Inc Broker Reciprocity (sm) program, allowing us to display other broker's listings on our website. All properties are subject to prior sale, change or withdrawal.



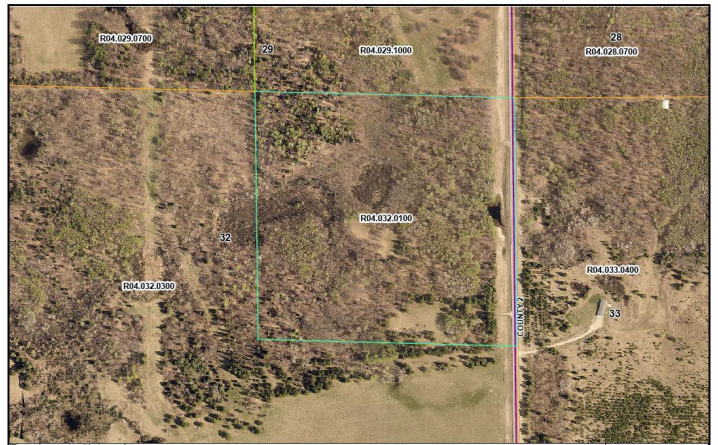
Call Affinity Real Estate

218-237-3333

info@affinityrealestate.com



Affinity Real Estate - 600 Park Avenue South - Park Rapids MN 56470



These data are provided on an "AS-IS" basis, without warranty of any type, expressed or implied, including but not limited to any warranty as to their performance, merchantability, or fitness for any particular purpose.

1.5.977 Date: 6/2/2026



website: www.AffinityRealEstate.com | email: info@affinityrealestate.com | office: 218-237-3333 | fax:218-237-3377



\$169,900
 MLS 7084968 Land
 40781 County 2
 Bagley MN 56621



website: www.AffinityRealEstate.com | email: info@affinityrealestate.com | office: 218-237-3333 | fax:218-237-3377



\$169,900
MLS 7084968 Land
40781 County 2
Bagley MN 56621



website: www.AffinityRealEstate.com | email: info@affinityrealestate.com | office: 218-237-3333 | fax:218-237-3377



\$169,900
MLS 7084968 Land
40781 County 2
Bagley MN 56621