



MLS 7085060 Residential

\$279,000

2,187 sq ft
3 bedrooms
2 baths

21705 Edwards Drive
Ironton MN 56455

Status: Active

Description:

Nestled on the edge of Crosby-Ironton in Irondale Township, this beautifully updated home offers the perfect blend of modern comfort and outdoor adventure. Situated just minutes from the renowned Cuyuna Country State Recreation Area, you'll have world-class mountain biking, hiking, fishing, and year-round recreation right at your doorstep. Inside, you'll find a home that has been completely transformed — updates in 2020–2021 include new appliances, water heater, furnace, central air, plumbing, and electrical, giving you the peace of mind of essentially a new home with all the character of an established neighborhood. Move in with confidence knowing the major systems have already been done for you. Outside, the large yard is made for entertaining. Gather around the patio firepit on cool Minnesota evenings, enjoy the open space, and take advantage of a ready-to-build garage location — the groundwork is already done, just waiting for your vision. Whether you're looking for a full-time residence or a recreational getaway, this property checks every box. Don't miss this opportunity to own in one of Minnesota's most sought-after outdoor destinations.

Additional Details:

Year Built	2001
Lot Acres	1.6
Lot Dimensions	422x268x391x132
School District	182
Taxes	\$664
Taxes with Assessments	\$664
Tax Year	2025

Additional Features:

Basement: Finished, Full, Partially Finished, Sump Pump, Walkout **Fuel:** Natural Gas **Heat:** Forced Air **Sewer:** Tank with Drainage Field
Water: Well **Air Conditioning:** Central Air

Driving Directions:

From 210/6 intersection in Crosby go West to Left on Winona to Straight on Edwards to Home on Right.



Listed By:
Coldwell Banker Crown Realtors

Affinity Real Estate Inc. participates in the Regional Multiple Listing Service of Minnesota, Inc Broker Reciprocity (sm) program, allowing us to display other broker's listings on our website. All properties are subject to prior sale, change or withdrawal.



Call Affinity Real Estate

218-237-3333

info@affinityrealestate.com



Affinity Real Estate - 600 Park Avenue South - Park Rapids MN 56470



website: www.AffinityRealEstate.com | email: info@affinityrealestate.com | office: 218-237-3333 | fax:218-237-3377

Affinity
REAL ESTATE INC

\$279,000
MLS 7085060 Residential
21705 Edwards Drive
Ironton MN 56455



website: www.AffinityRealEstate.com | email: info@affinityrealestate.com | office: 218-237-3333 | fax:218-237-3377



\$279,000
MLS 7085060 Residential
21705 Edwards Drive
Ironton MN 56455



website: www.AffinityRealEstate.com | email: info@affinityrealestate.com | office: 218-237-3333 | fax: 218-237-3377



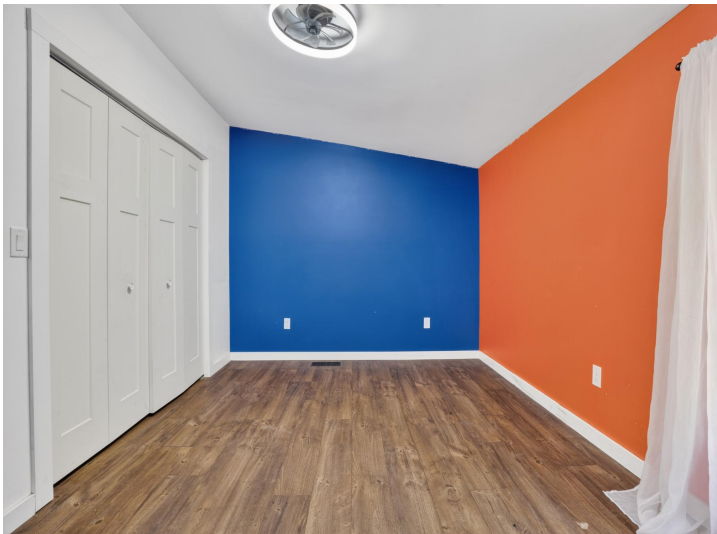
\$279,000
MLS 7085060 Residential
21705 Edwards Drive
Ironton MN 56455



website: www.AffinityRealEstate.com | email: info@affinityrealestate.com | office: 218-237-3333 | fax: 218-237-3377

Affinity
REAL ESTATE INC

\$279,000
MLS 7085060 Residential
21705 Edwards Drive
Ironton MN 56455



website: www.AffinityRealEstate.com | email: info@affinityrealestate.com | office: 218-237-3333 | fax: 218-237-3377

Affinity
REAL ESTATE INC

\$279,000
MLS 7085060 Residential
21705 Edwards Drive
Ironton MN 56455



website: www.AffinityRealEstate.com | email: info@affinityrealestate.com | office: 218-237-3333 | fax: 218-237-3377

Affinity
REAL ESTATE INC

\$279,000
MLS 7085060 Residential
21705 Edwards Drive
Ironton MN 56455



AREA OVERVIEW

OPEN DAILY, 8 AM - 10 PM
Mountain bike trail closures will be posted on the CCSRA website and at obvious locations in the field.

Park Facilities and Features:

- 83 Campsites (sites)
- 1 Group camp
- 3 Nuts
- 1.4 miles of accessible trail
- 7.5 miles of adaptive biking trails
- Designated trout lakes
- Scuba diving opportunities
- Swimming beaches at Portsmouth
- Campground and Rally Center
- Mountain bike trails
- Groomed fat tire bike trails in winter
- Cuyuna Lakes State Trail
- 9.5 miles, paved

MAHONOMEN UNIT (north) - (9.4 miles)

PORTSMOUTH UNIT - (4.8 miles)

YAWKEY UNIT - (12 miles)

MAHONOMEN UNIT (south) - (17.1 miles)

SAGAMORE UNIT - (15.1 miles)

ABOUT CUYUNA COUNTRY STATE RECREATION AREA

Abandoned by mining companies more than 30 years ago, this area now boasts 5,000 acres of regenerated vegetation. The area offers a variety of recreation opportunities including biking (paved and mountain bike trails), snowmobiling, fishing, boating, hiking, wildlife-watching, scuba diving, camping and more.

The 59-mile long mountain bike trail system covers nearly 800 acres. Check out the Yawkey Mine Lake, or for a great view, go west through the Miner's Mountain Rally Center to see the Miner's Mountain Overlook and the Huntington Mine Lake.

When it rains, the single track trails will be immediately closed to all users (foot or bike) until trail conditions dry out or improve. Please contact the park office for up-to-date information or visit the CCSRA website.

In addition to 27 miles of natural shoreline, six mine lakes connect to create 267 acres of continuous water, perfect for exploring by boat or canoe. Anglers can cast a line for trout (with a trout stamp), northern, bass, crappie or sunfish.

Divers will find clear water with sheer walls and flat terraces, characteristic of the mine roads, railroads and other remnants of the mining industry.

NOTE: Hiking is allowed on the mountain bike trails, unless posted restricted.

website: www.AffinityRealEstate.com | email: info@affinityrealestate.com | office: 218-237-3333 | fax: 218-237-3377



\$279,000
MLS 7085060 Residential
21705 Edwards Drive
Ironton MN 56455