



MLS 7085085 Land

\$40,000

0.11 Acres
Finished Lot(s)

28668 Lot 122 Hurtig Road
Pequot Lakes MN 56472

Status: Active

Description:

Own your own RV lot with full concrete pad in the luxury park with the perfect location between Nisswa and Crosslake. Enjoy the amenities of Nisswa, Pequot, the Gull and Whitefish chains along with World Class Golf courses all around. This lot is connected to water/sewer/electric. This park has a shower and laundry facility. HOA dues are paid for 2026.

Additional Details:

Lot Acres	0.11
Lot Dimensions	50x113
School District	186
Taxes	\$178
Taxes with Assessments	\$178
Tax Year	2026

Additional Features:

Driving Directions:

From Brainerd, north on 371 to a left on Patriot Ave, to the first left to a left on hurtig road. Gate opening is on the left.



Listed By:
Weichert REALTORS Tower Properties

Affinity Real Estate Inc. participates in the Regional Multiple Listing Service of Minnesota, Inc Broker Reciprocity (sm) program, allowing us to display other broker's listings on our website. All properties are subject to prior sale, change or withdrawal.



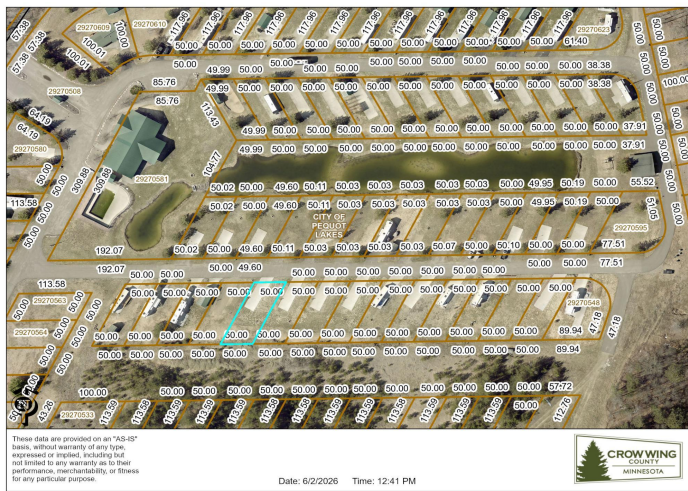
Call Affinity Real Estate

218-237-3333

info@affinityrealestate.com



Affinity Real Estate - 600 Park Avenue South - Park Rapids MN 56470



website: www.AffinityRealEstate.com | email: info@affinityrealestate.com | office: 218-237-3333 | fax:218-237-3377



\$40,000
MLS 7085085 Land
28668 Lot 122 Hurtig Road
Pequot Lakes MN 56472



website: www.AffinityRealEstate.com | email: info@affinityrealestate.com | office: 218-237-3333 | fax:218-237-3377



\$40,000
MLS 7085085 Land
28668 Lot 122 Hurtig Road
Pequot Lakes MN 56472