



MLS 7085144 Lake Home

\$499,900

1,400 sq ft
2 bedrooms
2 baths

12698 County Road 8
Brainerd MN 56401

Waterfront: Grave

Status: Active

Description:

Start making lifelong memories in the Northwoods with this east-facing, year-round Grave Lake property. The meticulously maintained home is tucked away among towering pines, overlooking a large backyard with gentle elevation down to the hard sand frontage. This property offers the quintessential "Up North" look and feel. Perfect for hosting friends and family, the home features 2 bedrooms, 2 bathrooms, an additional flex-room, designated parking with power for an RV, and a beautifully finished bunkhouse in the detached garage. Enjoy al fresco dining on the freshly landscaped terrace, while the breeze whispers through the pines, or relax on the pristine shoreline. A long list of recent updates includes over \$80,000 in professional landscaping, including new riprap, fire pit, and patio. Bring the toys, one stall of garage, and a shed for extra storage. Whether you're seeking a weekend escape or a year-round residence, this Grave Lake property is ready to be enjoyed from day one.

Additional Details:


| | |
|------------------------|-----------------|
| Year Built | 1980 |
| Lot Acres | 0.63 |
| Lot Dimensions | 100x262x103x286 |
| Garage Stalls | 1 |
| School District | 181 |
| Taxes | \$2,423 |
| Taxes with Assessments | \$2,448 |
| Tax Year | 2026 |

Additional Features:

Basement: Block, Finished, Walkout **Fuel:** Propane **Garage:** 1 **Heat:** Baseboard, Boiler **Sewer:** Tank with Drainage Field **Water:** Private **Air Conditioning:** Ductless Mini-Split

Driving Directions:

East of Brainerd on State Hwy 18 for 8 miles, then South on County Rd 8 for 1/2 mile to home on left.

 Listed By:
eXp Realty

Affinity Real Estate Inc. participates in the Regional Multiple Listing Service of Minnesota, Inc Broker Reciprocity (sm) program, allowing us to display other broker's listings on our website. All properties are subject to prior sale, change or withdrawal.

 **Call Affinity Real Estate**
218-237-3333
info@affinityrealestate.com

Affinity Real Estate - 600 Park Avenue South - Park Rapids MN 56470



website: www.AffinityRealEstate.com | email: info@affinityrealestate.com | office: 218-237-3333 | fax:218-237-3377



\$499,900
MLS 7085144 Lake Home
12698 County Road 8
Brainerd MN 56401



website: www.AffinityRealEstate.com | email: info@affinityrealestate.com | office: 218-237-3333 | fax: 218-237-3377

Affinity
REAL ESTATE INC

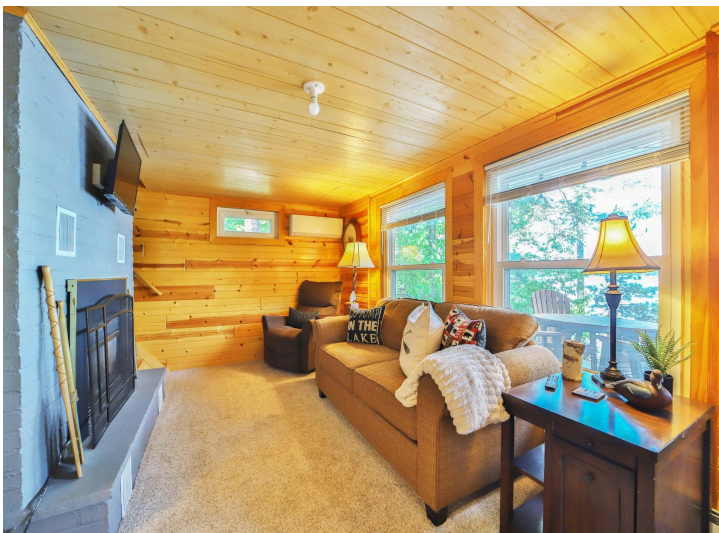
\$499,900
MLS 7085144 Lake Home
12698 County Road 8
Brainerd MN 56401



website: www.AffinityRealEstate.com | email: info@affinityrealestate.com | office: 218-237-3333 | fax:218-237-3377

Affinity
REAL ESTATE INC

\$499,900
MLS 7085144 Lake Home
12698 County Road 8
Brainerd MN 56401



website: www.AffinityRealEstate.com | email: info@affinityrealestate.com | office: 218-237-3333 | fax:218-237-3377

Affinity
REAL ESTATE INC

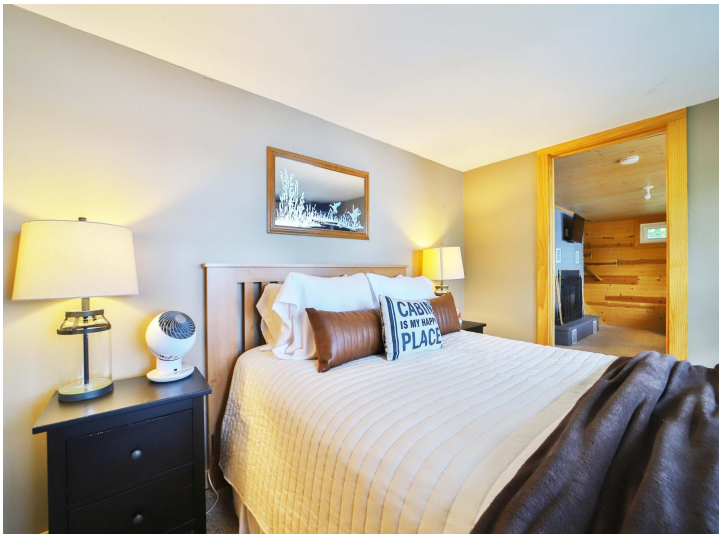
\$499,900
MLS 7085144 Lake Home
12698 County Road 8
Brainerd MN 56401



website: www.AffinityRealEstate.com | email: info@affinityrealestate.com | office: 218-237-3333 | fax:218-237-3377



\$499,900
MLS 7085144 Lake Home
12698 County Road 8
Brainerd MN 56401



website: www.AffinityRealEstate.com | email: info@affinityrealestate.com | office: 218-237-3333 | fax:218-237-3377

Affinity
REAL ESTATE INC

\$499,900
MLS 7085144 Lake Home
12698 County Road 8
Brainerd MN 56401



website: www.AffinityRealEstate.com | email: info@affinityrealestate.com | office: 218-237-3333 | fax:218-237-3377

Affinity
REAL ESTATE INC

\$499,900
MLS 7085144 Lake Home
12698 County Road 8
Brainerd MN 56401



website: www.AffinityRealEstate.com | email: info@affinityrealestate.com | office: 218-237-3333 | fax:218-237-3377



\$499,900
MLS 7085144 Lake Home
12698 County Road 8
Brainerd MN 56401



website: www.AffinityRealEstate.com | email: info@affinityrealestate.com | office: 218-237-3333 | fax:218-237-3377

Affinity
REAL ESTATE INC

\$499,900
MLS 7085144 Lake Home
12698 County Road 8
Brainerd MN 56401