



MLS 7085286 Residential

\$375,000

2,185 sq ft
4 bedrooms
2 baths

1100 Lochmist Lane
Alexandria MN 56308

Status: Active

Description:

Beautiful split level that consists of 4 BR/2 Bathrooms and located in the heart of Alexandria. Some of this homes many features include: open concept includes your kitchen, dining room & living room space together and for easy entertainment of family and friends, large owner's suite with walk in closet that is attached to the upper-level bathroom, lower-level features include look out windows in large family room, Two additional bedrooms, a bathroom and laundry room round out the perfect family home. The attached 2 car garage is heated and insulated. Close distance to downtown, a park, walking paths and several lakes and restaurants.

Additional Details:

Year Built	1997
Lot Acres	0.35
Lot Dimensions	100x150
Garage Stalls	2
School District	206
Taxes	\$3,262
Taxes with Assessments	\$3,262
Tax Year	2026

Additional Features:

Basement: Full **Fuel:** Natural Gas **Garage:** 2 **Heat:** Forced Air **Sewer:** City Sewer/Connected **Water:** City Water/Connected **Air Conditioning:** Central Air

Driving Directions:

Going west on County Rd 82 take a right on County Rd 22 right on Voyager Drive then take a left on Lochmist Lane to the property on the left.



Listed By:
Lakes Family Real Estate/Otter Tail Real Estate

Affinity Real Estate Inc. participates in the Regional Multiple Listing Service of Minnesota, Inc Broker Reciprocity (sm) program, allowing us to display other broker's listings on our website. All properties are subject to prior sale, change or withdrawal.



Call Affinity Real Estate

218-237-3333

info@affinityrealestate.com



Affinity Real Estate - 600 Park Avenue South - Park Rapids MN 56470



website: www.AffinityRealEstate.com | email: info@affinityrealestate.com | office: 218-237-3333 | fax:218-237-3377



\$375,000
MLS 7085286 Residential
1100 Lochmist Lane
Alexandria MN 56308



website: www.AffinityRealEstate.com | email: info@affinityrealestate.com | office: 218-237-3333 | fax:218-237-3377



\$375,000
MLS 7085286 Residential
1100 Lochmist Lane
Alexandria MN 56308



website: www.AffinityRealEstate.com | email: info@affinityrealestate.com | office: 218-237-3333 | fax:218-237-3377



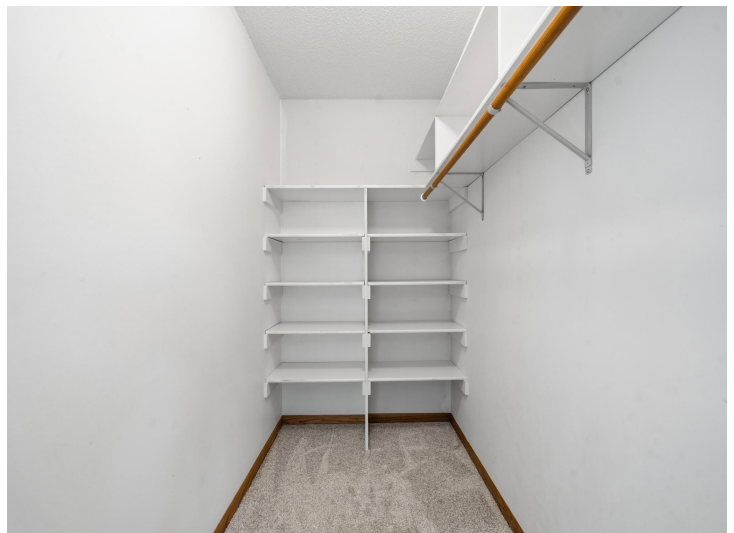
\$375,000
MLS 7085286 Residential
1100 Lochmist Lane
Alexandria MN 56308



website: www.AffinityRealEstate.com | email: info@affinityrealestate.com | office: 218-237-3333 | fax:218-237-3377

Affinity
REAL ESTATE INC

\$375,000
MLS 7085286 Residential
1100 Lochmist Lane
Alexandria MN 56308



website: www.AffinityRealEstate.com | email: info@affinityrealestate.com | office: 218-237-3333 | fax:218-237-3377



\$375,000
MLS 7085286 Residential
1100 Lochmist Lane
Alexandria MN 56308



website: www.AffinityRealEstate.com | email: info@affinityrealestate.com | office: 218-237-3333 | fax:218-237-3377



\$375,000
MLS 7085286 Residential
1100 Lochmist Lane
Alexandria MN 56308



website: www.AffinityRealEstate.com | email: info@affinityrealestate.com | office: 218-237-3333 | fax:218-237-3377



\$375,000
MLS 7085286 Residential
1100 Lochmist Lane
Alexandria MN 56308



website: www.AffinityRealEstate.com | email: info@affinityrealestate.com | office: 218-237-3333 | fax:218-237-3377



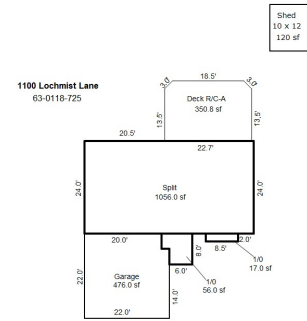
\$375,000
MLS 7085286 Residential
1100 Lochmist Lane
Alexandria MN 56308



website: www.AffinityRealEstate.com | email: info@affinityrealestate.com | office: 218-237-3333 | fax:218-237-3377

Affinity
REAL ESTATE INC

\$375,000
MLS 7085286 Residential
1100 Lochmist Lane
Alexandria MN 56308



Search by Aera Search

website: www.AffinityRealEstate.com | email: info@affinityrealestate.com | office: 218-237-3333 | fax: 218-237-3377



\$375,000
 MLS 7085286 Residential
 1100 Lochmist Lane
 Alexandria MN 56308