



MLS 7085368 Residential

\$724,900

4,256 sq ft
5 bedrooms
3 baths

24397 Fishtrap Road
Nisswa MN 56468

Status: Coming Soon

Description:

Don't miss this five bedroom, three bath Nisswa home. Home sits on professionally landscaped yard with 2+ acres. Home features an open floor plan, fireplace, custom built ins, granite countertops, four season porch, large primary suite with walk-in closet and tiled shower, main floor laundry, in-floor heat, central air, a full finished walkout basement, an attached four car garage and another detached two-car garage, fire pit, large deck and so much more. Set up a showing today.

Additional Details:

Year Built	2011
Lot Acres	2.32
Lot Dimensions	322x306
Garage Stalls	6
School District	181
Taxes	\$4,956
Taxes with Assessments	\$4,956
Tax Year	2025

Additional Features:

Fuel: Natural Gas **Heat:** Boiler, Forced Air, Fireplace(s), Humidifier, In-Floor Heating

Driving Directions:

Road Name may come up as "Wild Wings Way" From MN-371 N: turn right onto Clark Lake Rd, turn right onto Wild Wings Way. Turn right onto Fishtrap Rd, home will be on the right.



Listed By:
eXp Realty

Affinity Real Estate Inc. participates in the Regional Multiple Listing Service of Minnesota, Inc Broker Reciprocity (sm) program, allowing us to display other broker's listings on our website. All properties are subject to prior sale, change or withdrawal.



Call Affinity Real Estate

218-237-3333

info@affinityrealestate.com



Affinity Real Estate - 600 Park Avenue South - Park Rapids MN 56470



website: www.AffinityRealEstate.com | email: info@affinityrealestate.com | office: 218-237-3333 | fax: 218-237-3377

Affinity
REAL ESTATE INC

\$724,900
MLS 7085368 Residential
24397 Fishtrap Road
Nisswa MN 56468



website: www.AffinityRealEstate.com | email: info@affinityrealestate.com | office: 218-237-3333 | fax:218-237-3377



\$724,900
MLS 7085368 Residential
24397 Fishtrap Road
Nisswa MN 56468



website: www.AffinityRealEstate.com | email: info@affinityrealestate.com | office: 218-237-3333 | fax: 218-237-3377

Affinity
REAL ESTATE INC

\$724,900
MLS 7085368 Residential
24397 Fishtrap Road
Nisswa MN 56468



website: www.AffinityRealEstate.com | email: info@affinityrealestate.com | office: 218-237-3333 | fax:218-237-3377

Affinity
REAL ESTATE INC

\$724,900
MLS 7085368 Residential
24397 Fishtrap Road
Nisswa MN 56468



website: www.AffinityRealEstate.com | email: info@affinityrealestate.com | office: 218-237-3333 | fax: 218-237-3377

Affinity
REAL ESTATE INC

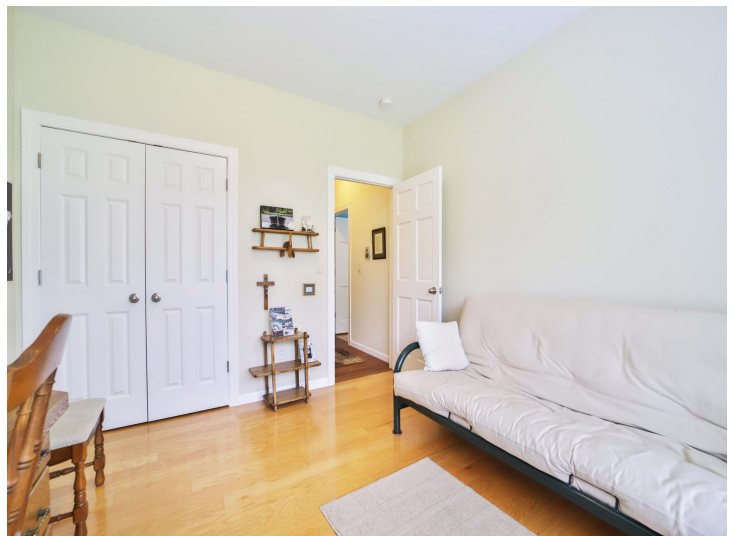
\$724,900
MLS 7085368 Residential
24397 Fishtrap Road
Nisswa MN 56468



website: www.AffinityRealEstate.com | email: info@affinityrealestate.com | office: 218-237-3333 | fax:218-237-3377



\$724,900
MLS 7085368 Residential
24397 Fishtrap Road
Nisswa MN 56468



website: www.AffinityRealEstate.com | email: info@affinityrealestate.com | office: 218-237-3333 | fax:218-237-3377

Affinity
REAL ESTATE INC

\$724,900
MLS 7085368 Residential
24397 Fishtrap Road
Nisswa MN 56468



website: www.AffinityRealEstate.com | email: info@affinityrealestate.com | office: 218-237-3333 | fax:218-237-3377

Affinity
REAL ESTATE INC

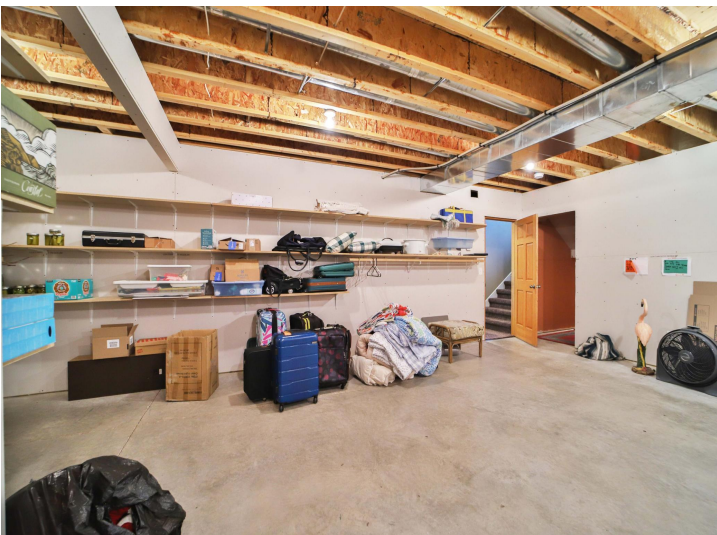
\$724,900
MLS 7085368 Residential
24397 Fishtrap Road
Nisswa MN 56468



website: www.AffinityRealEstate.com | email: info@affinityrealestate.com | office: 218-237-3333 | fax:218-237-3377

Affinity
REAL ESTATE INC

\$724,900
MLS 7085368 Residential
24397 Fishtrap Road
Nisswa MN 56468



website: www.AffinityRealEstate.com | email: info@affinityrealestate.com | office: 218-237-3333 | fax:218-237-3377

Affinity
REAL ESTATE INC

\$724,900
MLS 7085368 Residential
24397 Fishtrap Road
Nisswa MN 56468



website: www.AffinityRealEstate.com | email: info@affinityrealestate.com | office: 218-237-3333 | fax: 218-237-3377

Affinity
REAL ESTATE INC

\$724,900
MLS 7085368 Residential
24397 Fishtrap Road
Nisswa MN 56468



website: www.AffinityRealEstate.com | email: info@affinityrealestate.com | office: 218-237-3333 | fax:218-237-3377



\$724,900
MLS 7085368 Residential
24397 Fishtrap Road
Nisswa MN 56468