



MLS 7085490 Land

**\$170,500**

31.48 Acres  
Raw Land

TBD Inglewood Drive  
Baxter MN 56401

Status: Active

**Description:**

Prime 31-Acre Development Opportunity in Baxter! Exceptional 31-acre parcel located in one of Baxter's most sought-after growth areas. Medium density zoned land that could be utilized for twin or townhome development, multiplex development, or just a single-family home. This property offers outstanding potential for investors, developers, and builders. With a highly desirable location near shopping, dining, schools, medical facilities, and recreational amenities, this site is ideally positioned to meet the area's growing housing demand. Rare opportunity to acquire a large tract of land with development flexibility in a thriving community. Don't miss your chance to invest in Baxter's future!

**Additional Details:**

Lot Acres	31.48
Lot Dimensions	1012x1369x1025x1358
School District	181
Taxes	\$844
Taxes with Assessments	\$844
Tax Year	2026

**Additional Features:**

**Driving Directions:**

From 371/210 intersection in Baxter go north on 371 to left on Pine Beach Road about 3/4 of a mile to left on Inglewood Dr to property on left.



Listed By:  
Realty ONE Group Choice

Affinity Real Estate Inc. participates in the Regional Multiple Listing Service of Minnesota, Inc Broker Reciprocity (sm) program, allowing us to display other broker's listings on our website. All properties are subject to prior sale, change or withdrawal.



**Call Affinity Real Estate**

**218-237-3333**

**info@affinityrealestate.com**



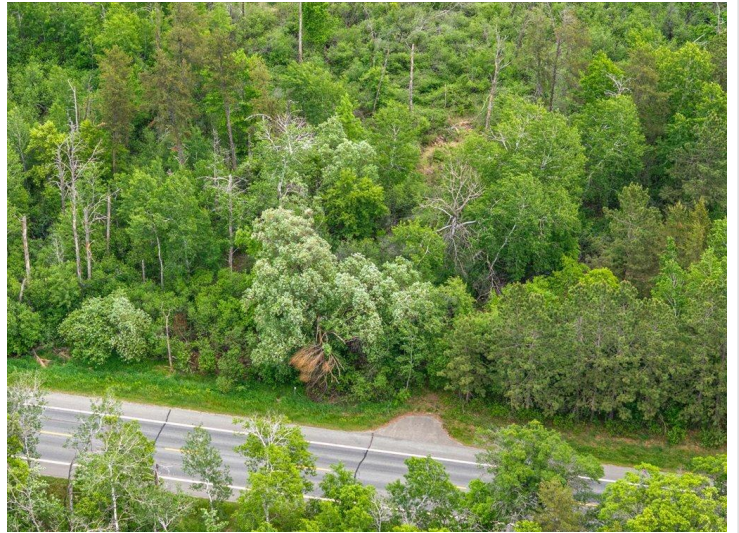
**Affinity Real Estate - 600 Park Avenue South - Park Rapids MN 56470**



website: [www.AffinityRealEstate.com](http://www.AffinityRealEstate.com) | email: [info@affinityrealestate.com](mailto:info@affinityrealestate.com) | office: 218-237-3333 | fax:218-237-3377



**\$170,500**  
MLS 7085490 Land  
TBD Inglewood Drive  
Baxter MN 56401



website: [www.AffinityRealEstate.com](http://www.AffinityRealEstate.com) | email: [info@affinityrealestate.com](mailto:info@affinityrealestate.com) | office: 218-237-3333 | fax:218-237-3377



**\$170,500**  
MLS 7085490 Land  
TBD Inglewood Drive  
Baxter MN 56401