

MLS 7085591 Lake Land

\$315,000

Description:

Rare Little Boy/Wabedo Chain opportunity offering approximately 125 feet of shoreline and 1.39 wooded acres on desirable Muskie Bay. This private lakeshore parcel features mature trees, beautiful lake views, and an ideal setting for your future lake home or cabin retreat.

Located on one of the area's most sought-after lake chains, enjoy exceptional boating, fishing, recreation, and access to thousands of acres of connected water. The property offers a peaceful setting with excellent privacy while remaining conveniently close to Longville and area amenities.

Opportunities to build on the Little Boy/Wabedo Chain are becoming increasingly rare. Whether you're planning a seasonal getaway or a year-round lake home, this property offers the chance to create a lasting legacy in the heart of Minnesota lake country.

Additional Details:

Lot Acres	1.39
Lot Dimensions	115 x 492 x 119 x 468
School District	118
Taxes	\$888
Taxes with Assessments	\$888
Tax Year	2025

Additional Features:

Driving Directions:

Take County Rd 54 NE to Wabedo Frontage Rd NE. Take Postal Bay Rd to Muskie Bay Rd NE. Follow road to end. Road ends at property line.



Listed By:
LPT Realty, LLC.

Affinity Real Estate Inc. participates in the Regional Multiple Listing Service of Minnesota, Inc Broker Reciprocity (sm) program, allowing us to display other broker's listings on our website. All properties are subject to prior sale, change or withdrawal.



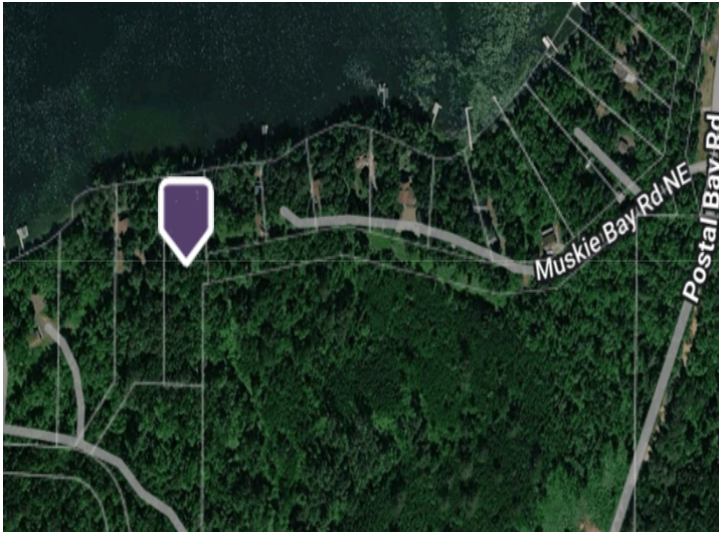
Call Affinity Real Estate

218-237-3333

info@affinityrealestate.com



Affinity Real Estate - 600 Park Avenue South - Park Rapids MN 56470



website: www.AffinityRealEstate.com | email: info@affinityrealestate.com | office: 218-237-3333 | fax:218-237-3377



\$315,000

MLS 7085591 Lake Land
tbd Muskie Bay Road
Longville MN 56655