



MLS 7085673 Residential

**\$495,000**

4,080 sq ft  
5 bedrooms  
3 baths

1115 Summit Avenue  
Detroit Lakes MN 56501

Status: Active

**Description:**

MAJESTIC HOME ON HISTORIC SUMMIT AVE - 5 Bedrooms -- 3 Bathrooms -- Screened in Summit facing porch -- 4,080 sq ft -- 3 stall detached garage -- fenced in back yard -- Thru driveway from Summit to Minnesota Ave. After 29 years off market, this historic home on Summit Ave awaits a new owner. Hardwood floors, bold woodwork and doors, stained glass accents, Cherry built-ins and even butler's stairway are just a few of the many details this grand home has to offer. A city block deep lot means a large yard and nice privacy, as the home is set back off Summit Ave so mornings or evenings spent in the screened porch are even more special. Triple stall garage that previous owner equipped with hot and cold water making this an IDEAL workspace for any auto enthusiast or hobbyist. This home will certainly be a crown jewel for the new owner.

**Additional Details:**

Year Built	1905
Lot Acres	0.6
Lot Dimensions	115x240 approx
Garage Stalls	3
School District	22
Taxes	\$2,960
Taxes with Assessments	\$2,960
Tax Year	2025

**Additional Features:**

**Basement:** Other **Fuel:** Natural Gas, Other **Garage:** 3 **Heat:** Boiler, Radiant **Sewer:** City Sewer/Connected **Water:** City Water/Connected **Air Conditioning:** Window Unit(s)

**Driving Directions:**

1115 Summit Ave, look for signs



Listed By:  
REMAX Lakes Region

Affinity Real Estate Inc. participates in the Regional Multiple Listing Service of Minnesota, Inc Broker Reciprocity (sm) program, allowing us to display other broker's listings on our website. All properties are subject to prior sale, change or withdrawal.



Call Affinity Real Estate

**218-237-3333**

[info@affinityrealestate.com](mailto:info@affinityrealestate.com)



Affinity Real Estate - 600 Park Avenue South - Park Rapids MN 56470



website: [www.AffinityRealEstate.com](http://www.AffinityRealEstate.com) | email: [info@affinityrealestate.com](mailto:info@affinityrealestate.com) | office: 218-237-3333 | fax: 218-237-3377

**Affinity**  
REAL ESTATE INC

**\$495,000**  
MLS 7085673 Residential  
1115 Summit Avenue  
Detroit Lakes MN 56501



website: [www.AffinityRealEstate.com](http://www.AffinityRealEstate.com) | email: [info@affinityrealestate.com](mailto:info@affinityrealestate.com) | office: 218-237-3333 | fax: 218-237-3377

**Affinity**  
REAL ESTATE INC

**\$495,000**  
MLS 7085673 Residential  
1115 Summit Avenue  
Detroit Lakes MN 56501



website: [www.AffinityRealEstate.com](http://www.AffinityRealEstate.com) | email: [info@affinityrealestate.com](mailto:info@affinityrealestate.com) | office: 218-237-3333 | fax: 218-237-3377

**Affinity**  
REAL ESTATE INC

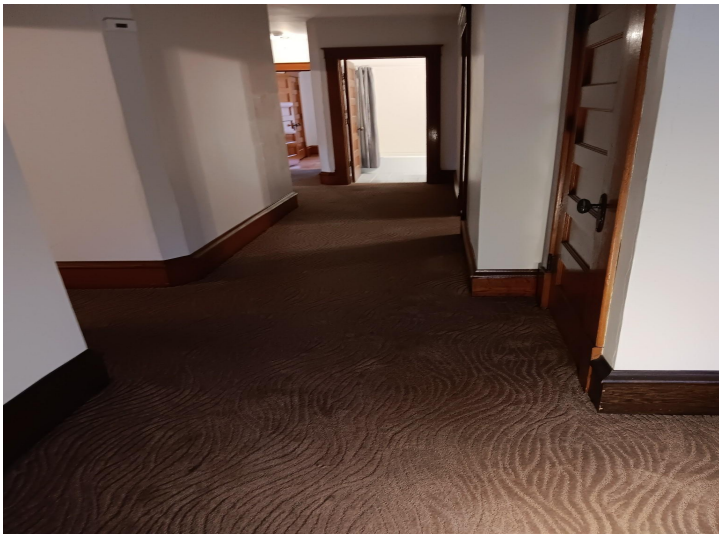
**\$495,000**  
MLS 7085673 Residential  
1115 Summit Avenue  
Detroit Lakes MN 56501



website: [www.AffinityRealEstate.com](http://www.AffinityRealEstate.com) | email: [info@affinityrealestate.com](mailto:info@affinityrealestate.com) | office: 218-237-3333 | fax:218-237-3377

**Affinity**  
REAL ESTATE INC

**\$495,000**  
MLS 7085673 Residential  
1115 Summit Avenue  
Detroit Lakes MN 56501



website: [www.AffinityRealEstate.com](http://www.AffinityRealEstate.com) | email: [info@affinityrealestate.com](mailto:info@affinityrealestate.com) | office: 218-237-3333 | fax:218-237-3377



**\$495,000**  
MLS 7085673 Residential  
1115 Summit Avenue  
Detroit Lakes MN 56501



website: [www.AffinityRealEstate.com](http://www.AffinityRealEstate.com) | email: [info@affinityrealestate.com](mailto:info@affinityrealestate.com) | office: 218-237-3333 | fax:218-237-3377



**\$495,000**  
MLS 7085673 Residential  
1115 Summit Avenue  
Detroit Lakes MN 56501



website: [www.AffinityRealEstate.com](http://www.AffinityRealEstate.com) | email: [info@affinityrealestate.com](mailto:info@affinityrealestate.com) | office: 218-237-3333 | fax:218-237-3377



**\$495,000**  
MLS 7085673 Residential  
1115 Summit Avenue  
Detroit Lakes MN 56501