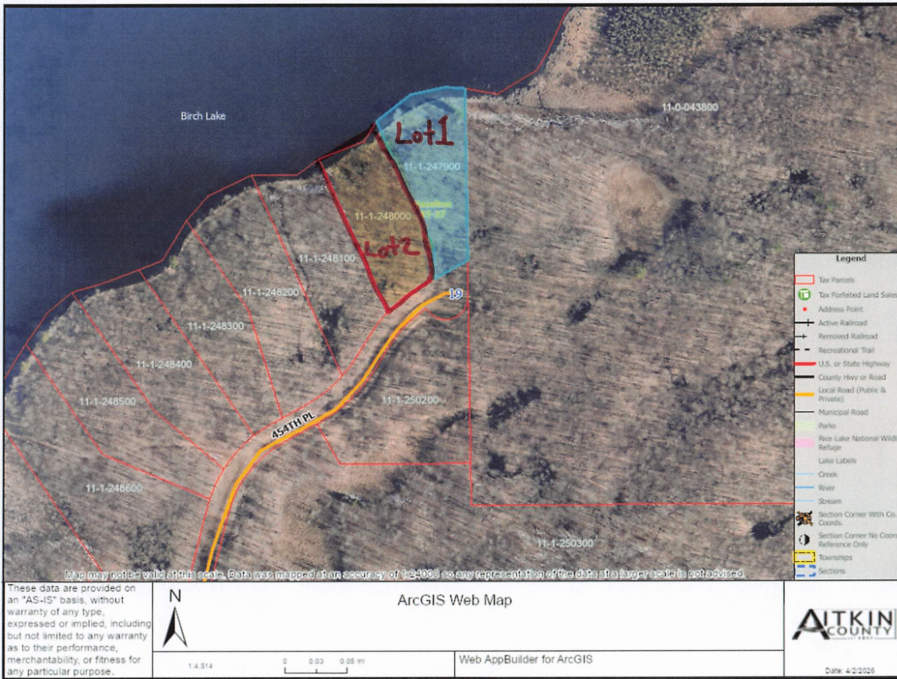




MLS 7085674 Lake Land

**\$159,900**



**Description:**

2.16-acre lot on Birch Lake ready for your summer plans! This beautiful property offers the perfect setting to build your cabin getaway or your dream home. Enjoy peaceful and private lake living with plenty of space to relax and explore. Opportunities like this don't last — don't wait!

**Additional Details:**

Lot Acres	2.16
Lot Dimensions	216.5x404.23x98.35x163x447.79
School District	8001
Taxes	\$108
Taxes with Assessments	\$108
Tax Year	2026

**Additional Features:**

**Driving Directions:**

From Garrison, go north on 169 to North (left) onto 450th Ave. Turn right to continue north on 450th Ave to 242nd Ln on the left.



Listed By:  
RE/MAX Results - Nisswa

Affinity Real Estate Inc. participates in the Regional Multiple Listing Service of Minnesota, Inc Broker Reciprocity (sm) program, allowing us to display other broker's listings on our website. All properties are subject to prior sale, change or withdrawal.



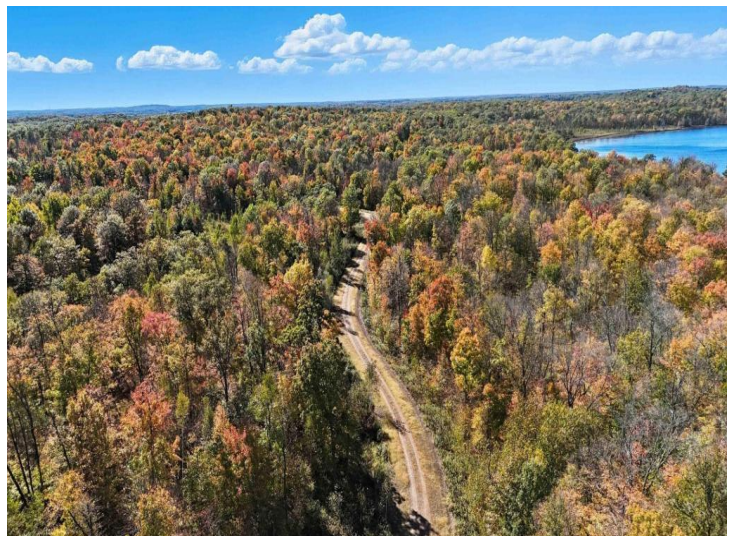
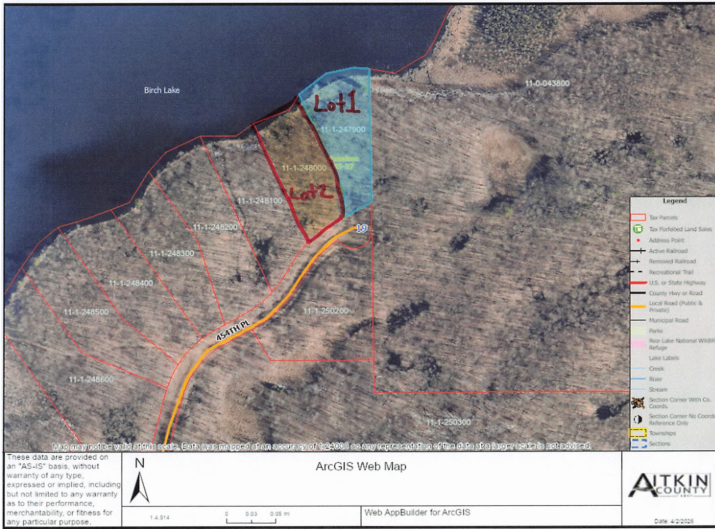
Call Affinity Real Estate

**218-237-3333**

[info@affinityrealestate.com](mailto:info@affinityrealestate.com)



Affinity Real Estate - 600 Park Avenue South - Park Rapids MN 56470



website: [www.AffinityRealEstate.com](http://www.AffinityRealEstate.com) | email: [info@affinityrealestate.com](mailto:info@affinityrealestate.com) | office: 218-237-3333 | fax:218-237-3377



**\$159,900**  
 MLS 7085674 Lake Land  
 Lot 2 454th Place  
 Aitkin MN 56431