



MLS 7085702 Residential

**\$265,000**

2,320 sq ft  
4 bedrooms  
3 baths

338 Abbott Street  
Eagle Bend MN 56446

Status: Coming Soon

**Description:**

Beautifully renovated 4-bedroom, 3-bath home situated on an oversized double corner lot in a great neighborhood. From the moment you arrive, you'll appreciate the extensive updates, including new vinyl siding, luxury vinyl plank flooring, appliances, carpet, and fresh finishes throughout.

The spacious floor plan offers comfortable living for families of all sizes, with plenty of room to gather, entertain, and grow. One of the homes most desirable features is the convenience of main-floor living, with bedrooms, a full bathroom, and laundry all located on the main level for easy everyday living.

Enjoy outdoor living on one of the two outside decks, perfect for relaxing, entertaining, or enjoying the spacious yard.

The attached 3-car garage includes an oversized bay with a 10x16 door, providing ample room for your camper, RV, boat, or other large equipment.


Need even more space? The detached workshop/garage is a standout feature, complete with heat and an air filtration system, making it ideal for woodworking, projects, storage, or year-round use.

With its extensive updates, versatile outbuildings, oversized lot, and family-friendly location, this property offers something for everyone.

Don't miss this opportunity to make this exceptional home yours-Schedule your showing today!

**Additional Details:**

Year Built	1977
Lot Acres	0.61
Lot Dimensions	198x134
Garage Stalls	4
School District	786
Taxes	\$3,020
Taxes with Assessments	\$3,020

 Listed By: 2026  
Counselor Realty Brainerd Lakes

**Additional Features:**  
Affinity Real Estate Inc. participates in the Regional Multiple Listing Service of Minnesota, Inc Broker Reciprocity (Full program) allowing us to display our listings on our website. All properties are subject to prior sale, change or withdrawal.

**Driving Directions:**



**Call Affinity Real Estate**

**218-237-3333**

**info@affinityrealestate.com**

**Basement:** Block, Egress Window(s), Finished, Full Storage Space **Fuel:** Natural Gas **Garage:** 4 **Heat:** Baseboard, Forced Air, Fireplace(s)

**Sewer:** City Sewer, Connectors, Water: City Water, Appliances, Air Conditioning, Central Air



**Affinity Real Estate - 600 Park Avenue South - Park Rapids MN 56470**

Head north on HWY 71 to Eagle Bend. Turn west on Abbott St W. Property is on top of hill on the left.



website: [www.AffinityRealEstate.com](http://www.AffinityRealEstate.com) | email: [info@affinityrealestate.com](mailto:info@affinityrealestate.com) | office: 218-237-3333 | fax: 218-237-3377

**Affinity**  
REAL ESTATE INC

**\$265,000**  
MLS 7085702 Residential  
338 Abbott Street  
Eagle Bend MN 56446



website: [www.AffinityRealEstate.com](http://www.AffinityRealEstate.com) | email: [info@affinityrealestate.com](mailto:info@affinityrealestate.com) | office: 218-237-3333 | fax:218-237-3377

**Affinity**  
REAL ESTATE INC

**\$265,000**  
MLS 7085702 Residential  
338 Abbott Street  
Eagle Bend MN 56446



website: [www.AffinityRealEstate.com](http://www.AffinityRealEstate.com) | email: [info@affinityrealestate.com](mailto:info@affinityrealestate.com) | office: 218-237-3333 | fax:218-237-3377

**Affinity**  
REAL ESTATE INC

**\$265,000**  
MLS 7085702 Residential  
338 Abbott Street  
Eagle Bend MN 56446



website: [www.AffinityRealEstate.com](http://www.AffinityRealEstate.com) | email: [info@affinityrealestate.com](mailto:info@affinityrealestate.com) | office: 218-237-3333 | fax:218-237-3377

**Affinity**  
REAL ESTATE INC

**\$265,000**  
MLS 7085702 Residential  
338 Abbott Street  
Eagle Bend MN 56446



website: [www.AffinityRealEstate.com](http://www.AffinityRealEstate.com) | email: [info@affinityrealestate.com](mailto:info@affinityrealestate.com) | office: 218-237-3333 | fax:218-237-3377



**\$265,000**  
MLS 7085702 Residential  
338 Abbott Street  
Eagle Bend MN 56446



website: [www.AffinityRealEstate.com](http://www.AffinityRealEstate.com) | email: [info@affinityrealestate.com](mailto:info@affinityrealestate.com) | office: 218-237-3333 | fax:218-237-3377

**Affinity**  
REAL ESTATE INC

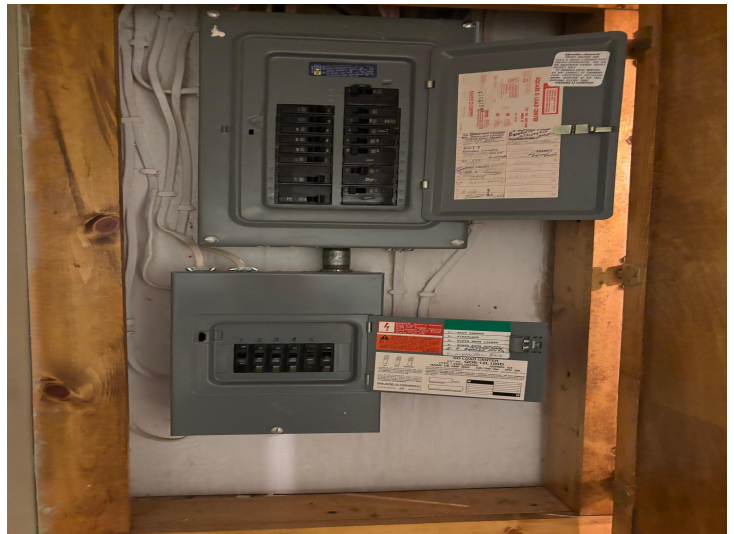
**\$265,000**  
MLS 7085702 Residential  
338 Abbott Street  
Eagle Bend MN 56446



website: [www.AffinityRealEstate.com](http://www.AffinityRealEstate.com) | email: [info@affinityrealestate.com](mailto:info@affinityrealestate.com) | office: 218-237-3333 | fax:218-237-3377

**Affinity**  
REAL ESTATE INC

**\$265,000**  
MLS 7085702 Residential  
338 Abbott Street  
Eagle Bend MN 56446



website: [www.AffinityRealEstate.com](http://www.AffinityRealEstate.com) | email: [info@affinityrealestate.com](mailto:info@affinityrealestate.com) | office: 218-237-3333 | fax:218-237-3377

**Affinity**  
REAL ESTATE INC

**\$265,000**  
MLS 7085702 Residential  
338 Abbott Street  
Eagle Bend MN 56446



website: [www.AffinityRealEstate.com](http://www.AffinityRealEstate.com) | email: [info@affinityrealestate.com](mailto:info@affinityrealestate.com) | office: 218-237-3333 | fax:218-237-3377

**Affinity**  
REAL ESTATE INC

**\$265,000**  
MLS 7085702 Residential  
338 Abbott Street  
Eagle Bend MN 56446