



MLS 7085864 Residential

**\$419,900**

2,987 sq ft  
4 bedrooms  
2 baths

10588 Chippewa Heights  
Brandon MN 56315

Status: Active

**Description:**

Country Living! This property has it all! With over 11 acres of land and in close proximity to Lake Chip, this home provides endless opportunities. Home features spacious, all one level living with 4 BR's all with walk in closets, 2 BA, large and open living area, MF laundry, walk out basement and so much more! The exterior boasts fenced in pasture areas, machine/livestock building, an old chicken coop and everything you need to make this a fabulous hobby farm! Roam free on this great property!

**Additional Details:**

Year Built	1995
Lot Acres	11.82
Lot Dimensions	Irregular
Garage Stalls	2
School District	2908
Taxes	\$3,901
Taxes with Assessments	\$4,998
Tax Year	2026

**Additional Features:**

**Basement:** Partial, Unfinished, Walkout **Fuel:** Propane, Wood **Garage:** 2 **Heat:** Forced Air, Wood Stove **Sewer:** Septic System Compliant - Yes **Water:** Private **Air Conditioning:** Central Air

**Driving Directions:**

From Alexandria, take Co Rd 82 W to Brandon, go North on Co Rd 7. Take right on Chippewa Heights Rd to sign on right.



Listed By:  
Counselor Realty Inc of Alex

Affinity Real Estate Inc. participates in the Regional Multiple Listing Service of Minnesota, Inc Broker Reciprocity (sm) program, allowing us to display other broker's listings on our website. All properties are subject to prior sale, change or withdrawal.



Call Affinity Real Estate

**218-237-3333**

[info@affinityrealestate.com](mailto:info@affinityrealestate.com)



Affinity Real Estate - 600 Park Avenue South - Park Rapids MN 56470



website: [www.AffinityRealEstate.com](http://www.AffinityRealEstate.com) | email: [info@affinityrealestate.com](mailto:info@affinityrealestate.com) | office: 218-237-3333 | fax:218-237-3377

**Affinity**  
REAL ESTATE INC

**\$419,900**  
MLS 7085864 Residential  
10588 Chippewa Heights  
Brandon MN 56315



website: [www.AffinityRealEstate.com](http://www.AffinityRealEstate.com) | email: [info@affinityrealestate.com](mailto:info@affinityrealestate.com) | office: 218-237-3333 | fax:218-237-3377



**\$419,900**  
MLS 7085864 Residential  
10588 Chippewa Heights  
Brandon MN 56315



website: [www.AffinityRealEstate.com](http://www.AffinityRealEstate.com) | email: [info@affinityrealestate.com](mailto:info@affinityrealestate.com) | office: 218-237-3333 | fax:218-237-3377

**Affinity**  
REAL ESTATE INC

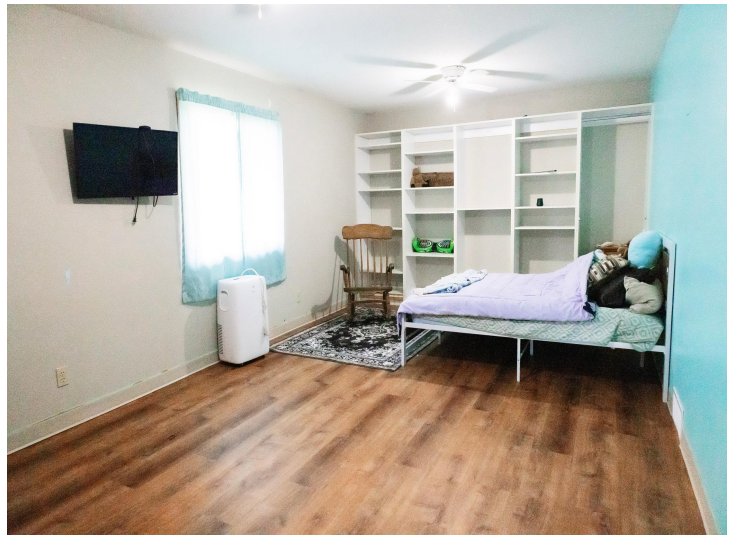
**\$419,900**  
MLS 7085864 Residential  
10588 Chippewa Heights  
Brandon MN 56315



website: [www.AffinityRealEstate.com](http://www.AffinityRealEstate.com) | email: [info@affinityrealestate.com](mailto:info@affinityrealestate.com) | office: 218-237-3333 | fax:218-237-3377

**Affinity**  
REAL ESTATE INC

**\$419,900**  
MLS 7085864 Residential  
10588 Chippewa Heights  
Brandon MN 56315



website: [www.AffinityRealEstate.com](http://www.AffinityRealEstate.com) | email: [info@affinityrealestate.com](mailto:info@affinityrealestate.com) | office: 218-237-3333 | fax:218-237-3377



**\$419,900**  
MLS 7085864 Residential  
10588 Chippewa Heights  
Brandon MN 56315



website: [www.AffinityRealEstate.com](http://www.AffinityRealEstate.com) | email: [info@affinityrealestate.com](mailto:info@affinityrealestate.com) | office: 218-237-3333 | fax:218-237-3377

**Affinity**  
REAL ESTATE INC

**\$419,900**  
MLS 7085864 Residential  
10588 Chippewa Heights  
Brandon MN 56315



website: [www.AffinityRealEstate.com](http://www.AffinityRealEstate.com) | email: [info@affinityrealestate.com](mailto:info@affinityrealestate.com) | office: 218-237-3333 | fax: 218-237-3377

**Affinity**  
REAL ESTATE INC

**\$419,900**  
MLS 7085864 Residential  
10588 Chippewa Heights  
Brandon MN 56315



website: [www.AffinityRealEstate.com](http://www.AffinityRealEstate.com) | email: [info@affinityrealestate.com](mailto:info@affinityrealestate.com) | office: 218-237-3333 | fax:218-237-3377

**Affinity**  
REAL ESTATE INC

**\$419,900**  
MLS 7085864 Residential  
10588 Chippewa Heights  
Brandon MN 56315



website: [www.AffinityRealEstate.com](http://www.AffinityRealEstate.com) | email: [info@affinityrealestate.com](mailto:info@affinityrealestate.com) | office: 218-237-3333 | fax:218-237-3377



**\$419,900**  
MLS 7085864 Residential  
10588 Chippewa Heights  
Brandon MN 56315



website: [www.AffinityRealEstate.com](http://www.AffinityRealEstate.com) | email: [info@affinityrealestate.com](mailto:info@affinityrealestate.com) | office: 218-237-3333 | fax:218-237-3377



**\$419,900**  
MLS 7085864 Residential  
10588 Chippewa Heights  
Brandon MN 56315