



MLS 7085932 Residential

\$549,900

2,200 sq ft
4 bedrooms
2 baths

16715 Paul Road
Brainerd MN 56401

Status: Coming Soon

Description:

Welcome to 16715 Paul Road – where privacy, convenience, and outdoor recreation come together! Nestled on just under an acre at the edge of Brainerd, this 4-bedroom, 2-bath home offers the perfect balance of peaceful country living with the convenience of being just minutes from town.

Inside, you'll find spacious living areas, a functional layout, and a large kitchen with plenty of cabinet space and stainless steel appliances. Step outside onto the low-maintenance composite deck overlooking the backyard, where you'll enjoy beautiful wooded views and direct access to hundreds of acres of State DNR land. The Paul Bunyan Trail is right out your back door, making it easy to enjoy walking, biking, snowmobiling, and year-round outdoor adventures.

The attached 3-car garage provides plenty of room for vehicles and storage, while the additional storage building in the backyard is included with the property and offers even more space for lawn equipment, tools, or recreational gear.

Located on a quiet road just minutes north of Gilbert Lake and only a short drive to Brainerd's shopping, restaurants, and schools, this property offers a hard-to-find combination of privacy, convenience, and access to the outdoors.

If you've been looking for a home with room to spread out and enjoy everything the Brainerd Lakes Area has to offer, this one is worth a look.

Additional Details:

Year Built	1995
Lot Acres	0.82
Lot Dimensions	236x150
Garage Stalls	3
School District	181
Taxes	\$2,200
Taxes with Assessments	\$2,200
Tax Year	2025

Listed By: **Woods to Water Real Estate**
 Fuel: Natural Gas
 Air Conditioning: Central Air
 Affinity Real Estate Inc. participates in the Regional Multiple Listing Service of Minnesota, Inc Broker Reciprocity (sm) program, allowing us to display other broker's listings on our website. All properties are subject to prior sale, change or withdrawal.
 Head South on Gilbert Lake Rd N, then turn right onto Paul St. N,



Call Affinity Real Estate

218-237-3333

info@affinityrealestate.com



is on your right.

Affinity Real Estate - 600 Park Avenue South - Park Rapids MN 56470



website: www.AffinityRealEstate.com | email: info@affinityrealestate.com | office: 218-237-3333 | fax:218-237-3377

Affinity
REAL ESTATE INC

\$549,900
MLS 7085932 Residential
16715 Paul Road
Brainerd MN 56401



website: www.AffinityRealEstate.com | email: info@affinityrealestate.com | office: 218-237-3333 | fax: 218-237-3377

Affinity
REAL ESTATE INC

\$549,900
MLS 7085932 Residential
16715 Paul Road
Brainerd MN 56401



website: www.AffinityRealEstate.com | email: info@affinityrealestate.com | office: 218-237-3333 | fax: 218-237-3377

Affinity
REAL ESTATE INC

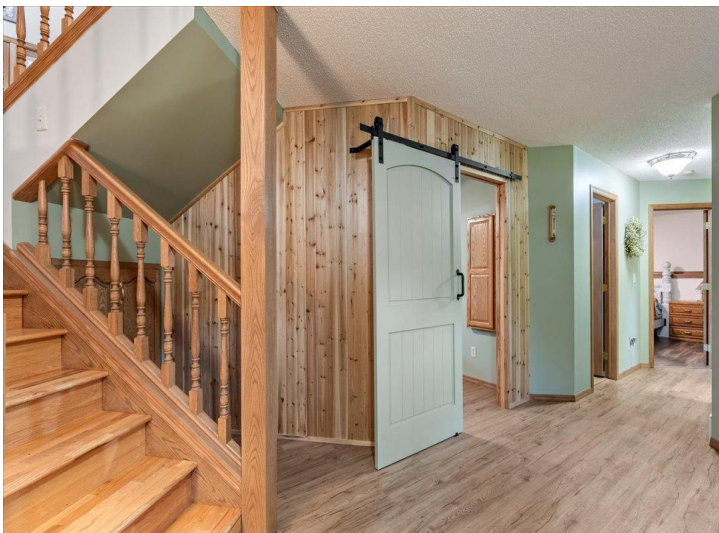
\$549,900
MLS 7085932 Residential
16715 Paul Road
Brainerd MN 56401



website: www.AffinityRealEstate.com | email: info@affinityrealestate.com | office: 218-237-3333 | fax: 218-237-3377

Affinity
REAL ESTATE INC

\$549,900
MLS 7085932 Residential
16715 Paul Road
Brainerd MN 56401



website: www.AffinityRealEstate.com | email: info@affinityrealestate.com | office: 218-237-3333 | fax:218-237-3377

Affinity
REAL ESTATE INC

\$549,900
MLS 7085932 Residential
16715 Paul Road
Brainerd MN 56401



website: www.AffinityRealEstate.com | email: info@affinityrealestate.com | office: 218-237-3333 | fax:218-237-3377

Affinity
REAL ESTATE INC

\$549,900
MLS 7085932 Residential
16715 Paul Road
Brainerd MN 56401



website: www.AffinityRealEstate.com | email: info@affinityrealestate.com | office: 218-237-3333 | fax:218-237-3377



\$549,900
MLS 7085932 Residential
16715 Paul Road
Brainerd MN 56401



website: www.AffinityRealEstate.com | email: info@affinityrealestate.com | office: 218-237-3333 | fax:218-237-3377



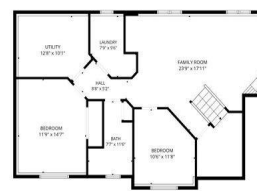
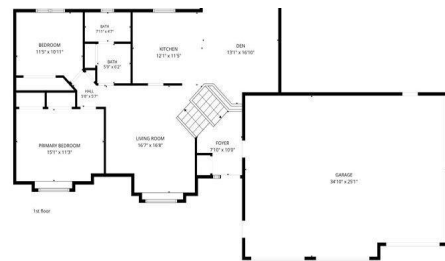
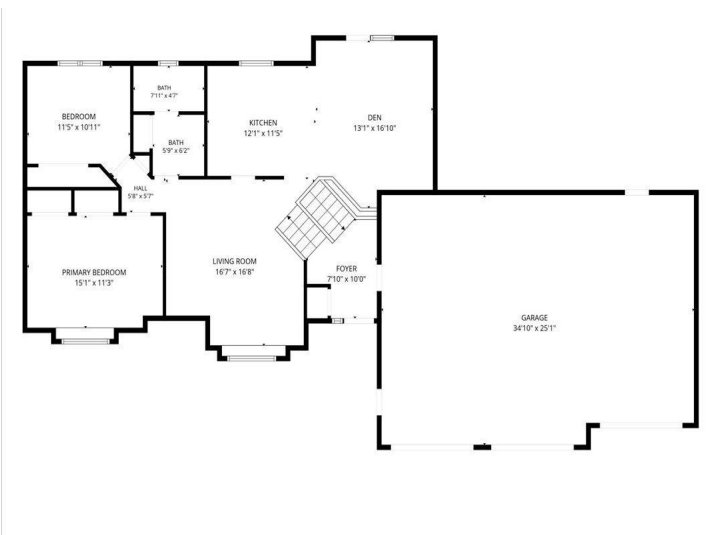
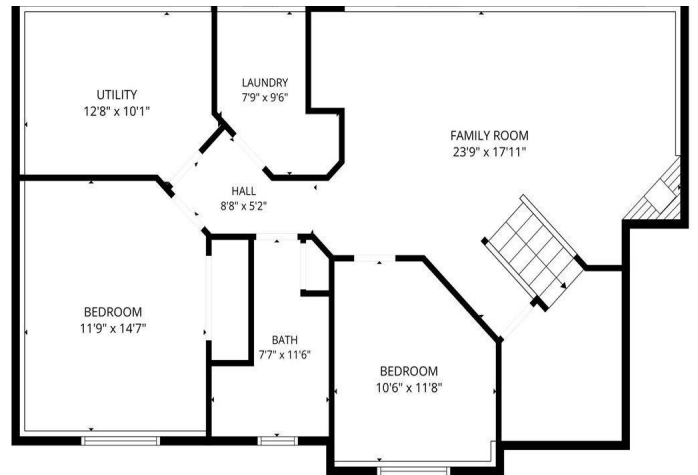
\$549,900
MLS 7085932 Residential
16715 Paul Road
Brainerd MN 56401



website: www.AffinityRealEstate.com | email: info@affinityrealestate.com | office: 218-237-3333 | fax:218-237-3377



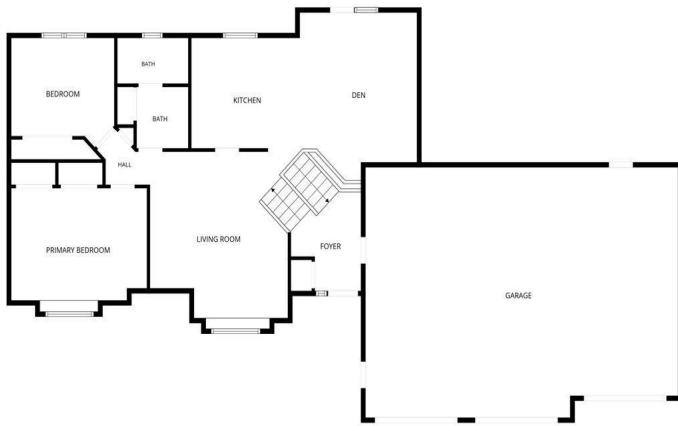
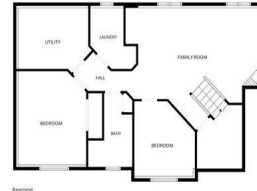
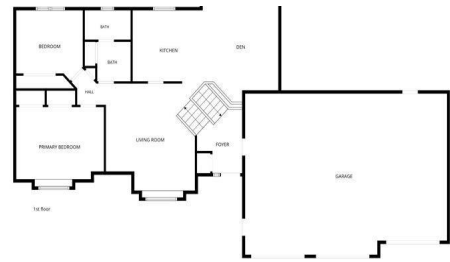
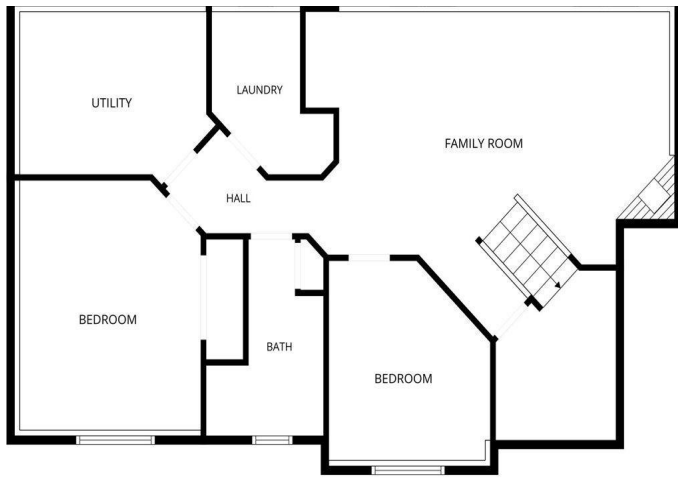
\$549,900
MLS 7085932 Residential
16715 Paul Road
Brainerd MN 56401



website: www.AffinityRealEstate.com | email: info@affinityrealestate.com | office: 218-237-3333 | fax:218-237-3377



\$549,900
 MLS 7085932 Residential
 16715 Paul Road
 Brainerd MN 56401



website: www.AffinityRealEstate.com | email: info@affinityrealestate.com | office: 218-237-3333 | fax:218-237-3377



\$549,900
 MLS 7085932 Residential
 16715 Paul Road
 Brainerd MN 56401