



MLS 7085954 Residential

\$149,900

1,504 sq ft
3 bedrooms
1 baths

114 Central Avenue
Bertha MN 56437

Status: Active

Description:

Check out this 3 bed 1 bath home conveniently located in Bertha on a corner lot just a block from the school, and a few more to downtown Bertha and Highway 71. Tons of updates to this home--roof, siding, windows, bathroom, and much more. Main floor features open kitchen and dining room along with bedroom, full bath, living room, and a finished four season porch for office use. The upper level has two more bedrooms and the basement includes a family area, laundry with sink, tankless water heater, and tons of storage. Nice home!

Additional Details:

Year Built	1915
Lot Acres	0.164
Lot Dimensions	50x140
School District	786
Taxes	\$1,170
Taxes with Assessments	\$1,170
Tax Year	2026

Additional Features:

Basement: Storage Space, Unfinished **Fuel:** Natural Gas **Heat:** Forced Air **Sewer:** City Sewer/Connected **Water:** City Water/Connected **Air Conditioning:** None

Driving Directions:

From Highway 71, take County Road 24 to Central Ave S. See sign.



Listed By:
Hinkle Realty

Affinity Real Estate Inc. participates in the Regional Multiple Listing Service of Minnesota, Inc Broker Reciprocity (sm) program, allowing us to display other broker's listings on our website. All properties are subject to prior sale, change or withdrawal.



Call Affinity Real Estate

218-237-3333

info@affinityrealestate.com



Affinity Real Estate - 600 Park Avenue South - Park Rapids MN 56470



website: www.AffinityRealEstate.com | email: info@affinityrealestate.com | office: 218-237-3333 | fax:218-237-3377

Affinity
REAL ESTATE INC

\$149,900
MLS 7085954 Residential
114 Central Avenue
Bertha MN 56437



website: www.AffinityRealEstate.com | email: info@affinityrealestate.com | office: 218-237-3333 | fax:218-237-3377



\$149,900
MLS 7085954 Residential
114 Central Avenue
Bertha MN 56437



website: www.AffinityRealEstate.com | email: info@affinityrealestate.com | office: 218-237-3333 | fax: 218-237-3377

Affinity
REAL ESTATE INC

\$149,900
MLS 7085954 Residential
114 Central Avenue
Bertha MN 56437



website: www.AffinityRealEstate.com | email: info@affinityrealestate.com | office: 218-237-3333 | fax: 218-237-3377

Affinity
REAL ESTATE INC

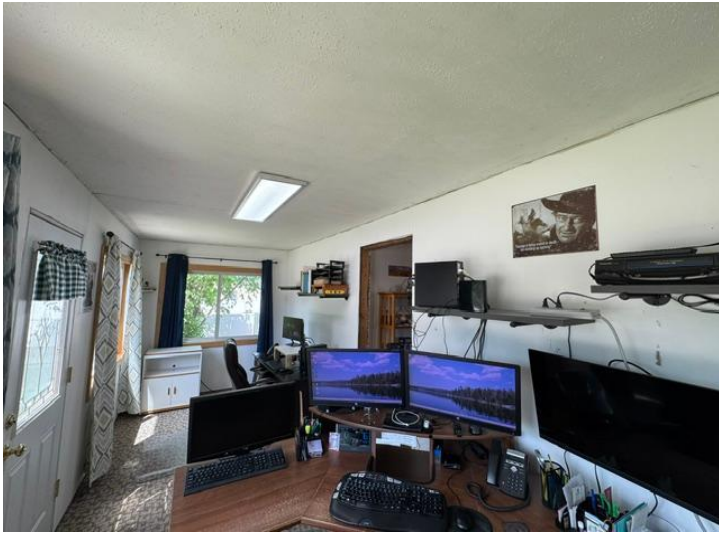
\$149,900
MLS 7085954 Residential
114 Central Avenue
Bertha MN 56437



website: www.AffinityRealEstate.com | email: info@affinityrealestate.com | office: 218-237-3333 | fax:218-237-3377

Affinity
REAL ESTATE INC

\$149,900
MLS 7085954 Residential
114 Central Avenue
Bertha MN 56437



website: www.AffinityRealEstate.com | email: info@affinityrealestate.com | office: 218-237-3333 | fax:218-237-3377

Affinity
REAL ESTATE INC

\$149,900
MLS 7085954 Residential
114 Central Avenue
Bertha MN 56437



website: www.AffinityRealEstate.com | email: info@affinityrealestate.com | office: 218-237-3333 | fax:218-237-3377

Affinity
REAL ESTATE INC

\$149,900
MLS 7085954 Residential
114 Central Avenue
Bertha MN 56437