



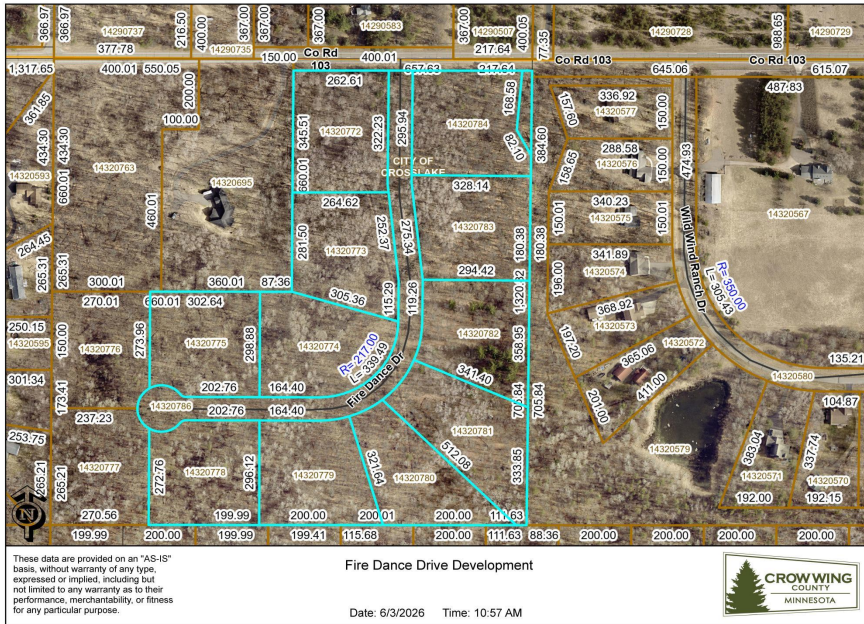
MLS 7086004 Land

**\$149,900**

2.08 Acres  
Subdivided

TBD Co Road 103  
Crosslake MN 56442

Status: Active



**Description:**

Excellent location just south of Crosslake and the Whitefish Chain. This is a new split and a beautiful, wooded corner lot with natural gas and electric at the road. Great opportunity to build in a quiet area, on a 2-acre lot, close to all of Crosslake's amenities!

**Additional Details:**

Year Built	2017
Lot Acres	2.08
Lot Dimensions	300x300xirregular
School District	186
Taxes	\$76
Taxes with Assessments	\$76
Tax Year	2025

**Additional Features:**

**Driving Directions:**

County 3 south of Crosslake to a right on Co 103 to a left and the corner of Co 103 and Fire Dance Drive and sign



Listed By:  
Northland Sotheby's International Realty

Affinity Real Estate Inc. participates in the Regional Multiple Listing Service of Minnesota, Inc Broker Reciprocity (sm) program, allowing us to display other broker's listings on our website. All properties are subject to prior sale, change or withdrawal.



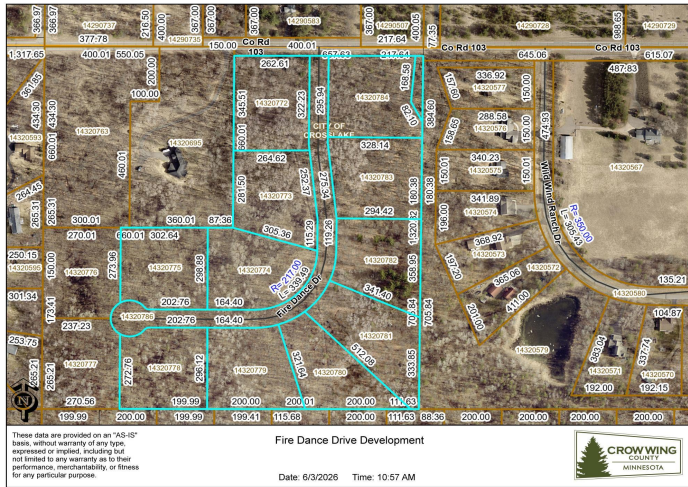
Call Affinity Real Estate

**218-237-3333**

[info@affinityrealestate.com](mailto:info@affinityrealestate.com)



Affinity Real Estate - 600 Park Avenue South - Park Rapids MN 56470



website: [www.AffinityRealEstate.com](http://www.AffinityRealEstate.com) | email: [info@affinityrealestate.com](mailto:info@affinityrealestate.com) | office: 218-237-3333 | fax: 218-237-3377



**\$149,900**  
 MLS 7086004 Land  
 TBD Co Road 103  
 Crosslake MN 56442