



MLS 7086051 Residential

\$145,000

1,920 sq ft
4 bedrooms
1 baths

2242 220th Avenue
Mahnomen MN 56557

Status: Active

Description:

Escape the hustle & discover your own private sanctuary Tucked completely out of sight from the road, this 1917 two-story Foursquare home sits on 13 beautiful, secluded acres—offering the ultimate canvas for your dream hobby farm, livestock, or sustainable homestead. Step inside to discover 1,920 square feet of grand historic craftsmanship, featuring breathtaking original woodwork, and gorgeous hardwood floors that flow throughout the entire home. The main level is spacious featuring a sunlit living room, a formal dining room with beautiful built-ins, and eat-in kitchen. Even a dedicated study with original pocket doors, perfect for a quiet home office, studio, or private guest space. Upstairs four spacious bedrooms with enduring character. Whether you are looking to farm, raise animals, or simply enjoy unmatched peace and quiet in a historic home, this property offers a lifestyle of privacy and potential that is hard to find. Schedule your private tour today.

Additional Details:

Year Built	1910
Lot Acres	13
Lot Dimensions	798x712
Garage Stalls	2
School District	432
Taxes	\$1,088
Taxes with Assessments	\$1,088
Tax Year	2026

Additional Features:

Basement: Full **Fuel:** Propane **Garage:** 2 **Heat:** Forced Air **Sewer:** Tank with Drainage Field **Water:** Sand Point, Well **Air Conditioning:** Window Unit(s)

Driving Directions:

From Mahnomen east on 200 about 7 miles south on county road 3 1/3 mile or so house on left.



Listed By:
218 Real Estate

Affinity Real Estate Inc. participates in the Regional Multiple Listing Service of Minnesota, Inc Broker Reciprocity (sm) program, allowing us to display other broker's listings on our website. All properties are subject to prior sale, change or withdrawal.



Call Affinity Real Estate

218-237-3333

info@affinityrealestate.com



Affinity Real Estate - 600 Park Avenue South - Park Rapids MN 56470



website: www.AffinityRealEstate.com | email: info@affinityrealestate.com | office: 218-237-3333 | fax:218-237-3377

Affinity
REAL ESTATE INC

\$145,000
MLS 7086051 Residential
2242 220th Avenue
Mahnomn MN 56557



website: www.AffinityRealEstate.com | email: info@affinityrealestate.com | office: 218-237-3333 | fax:218-237-3377



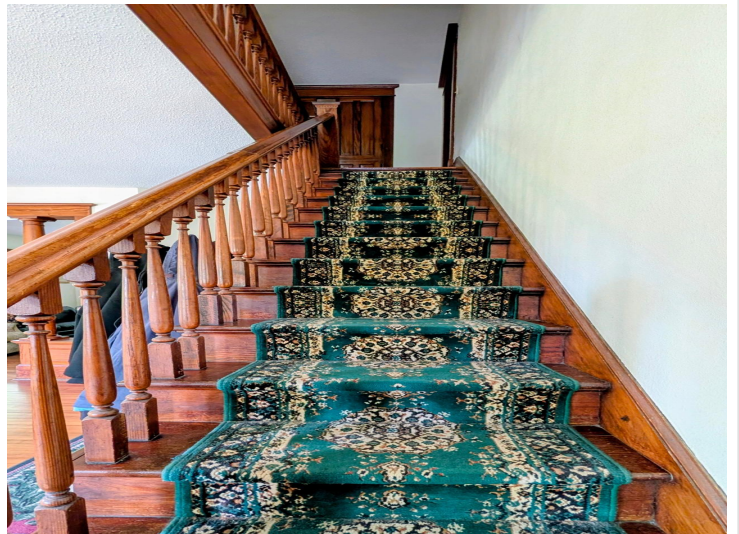
\$145,000
MLS 7086051 Residential
2242 220th Avenue
Mahnomon MN 56557



website: www.AffinityRealEstate.com | email: info@affinityrealestate.com | office: 218-237-3333 | fax:218-237-3377

Affinity
REAL ESTATE INC

\$145,000
MLS 7086051 Residential
2242 220th Avenue
Mahnomon MN 56557



website: www.AffinityRealEstate.com | email: info@affinityrealestate.com | office: 218-237-3333 | fax: 218-237-3377

Affinity
REAL ESTATE INC

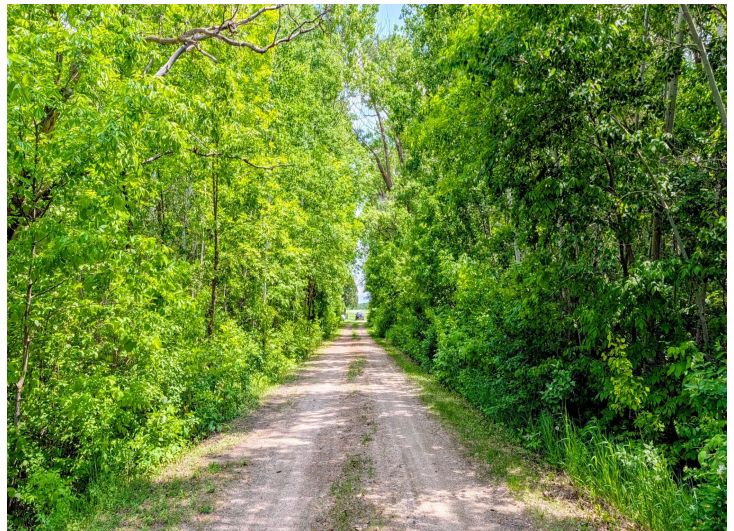
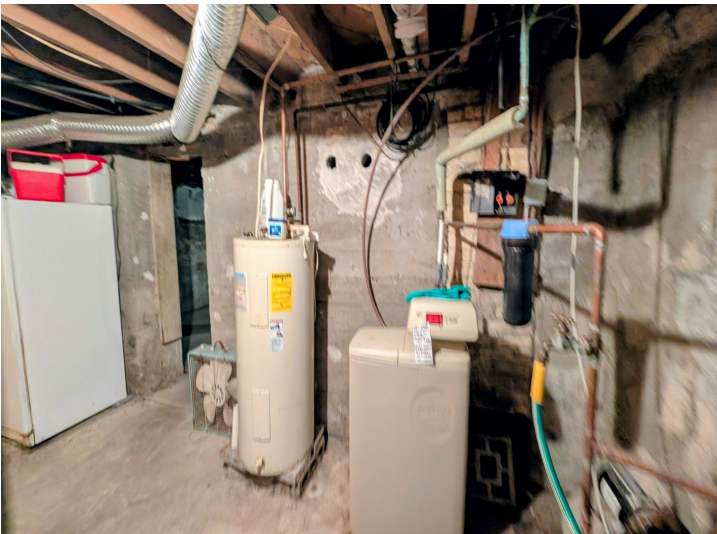
\$145,000
MLS 7086051 Residential
2242 220th Avenue
Mahnomen MN 56557



website: www.AffinityRealEstate.com | email: info@affinityrealestate.com | office: 218-237-3333 | fax:218-237-3377

Affinity
REAL ESTATE INC

\$145,000
MLS 7086051 Residential
2242 220th Avenue
Mahnomon MN 56557



website: www.AffinityRealEstate.com | email: info@affinityrealestate.com | office: 218-237-3333 | fax:218-237-3377

Affinity
REAL ESTATE INC

\$145,000
MLS 7086051 Residential
2242 220th Avenue
Mahnomon MN 56557



website: www.AffinityRealEstate.com | email: info@affinityrealestate.com | office: 218-237-3333 | fax:218-237-3377



\$145,000
MLS 7086051 Residential
2242 220th Avenue
Mahnomen MN 56557