



MLS 7086093 Residential

\$389,000

2,280 sq ft
4 bedrooms
2 baths

22668 299th Avenue
Akeley MN 56433

Status: Active

Description:

This 10acre property offers perfect up north living! 13 minutes from the quaint town of Walker. A handful of boutique shops with great food options, wine bars and breweries. Enjoy the Crow Wing Chain of lakes boating in the summer or snowmobiling wintertime! New carpet installed in this 4 bed, 2 bath home has an open floor plan. Master bedroom ensuite, walk-in shower, soaker tub, and 2 his & hers walk-in closets. Beautiful spacious kitchen with lots of cabinet space, spacious butler's quarters, sit up center island, and a large family room! Back yard is a must see! Surrounded by lush woods that provides secluded privacy. There is a trail that takes you through the property to the pond! Make sure to check it out and take a look at the aerial view. Wildlife is often seen in the back yard. New fenced in back yard. Bring your chickens as it is already equipped with a chicken coop. 2 car insulated garage. Come take a look at your perfect escape from the city life!

Additional Details:

Year Built	2020
Lot Acres	10
Lot Dimensions	336x1280x336x1280
Garage Stalls	2
School District	113
Taxes	\$284
Taxes with Assessments	\$284
Tax Year	2026

Additional Features:

Basement: None **Fuel:** Electric **Garage:** 2 **Heat:** Forced Air, Heat Pump **Sewer:** Mound Septic, Private Sewer **Water:** Well **Air Conditioning:** Central Air

Driving Directions:

From Akeley head south on Hwy 64. Make a right on 200th Street, continue to 299 Ave and make a right. Sign will be out.



Listed By:
LPT Realty, LLC.

Affinity Real Estate Inc. participates in the Regional Multiple Listing Service of Minnesota, Inc Broker Reciprocity (sm) program, allowing us to display other broker's listings on our website. All properties are subject to prior sale, change or withdrawal.



Call Affinity Real Estate

218-237-3333

info@affinityrealestate.com



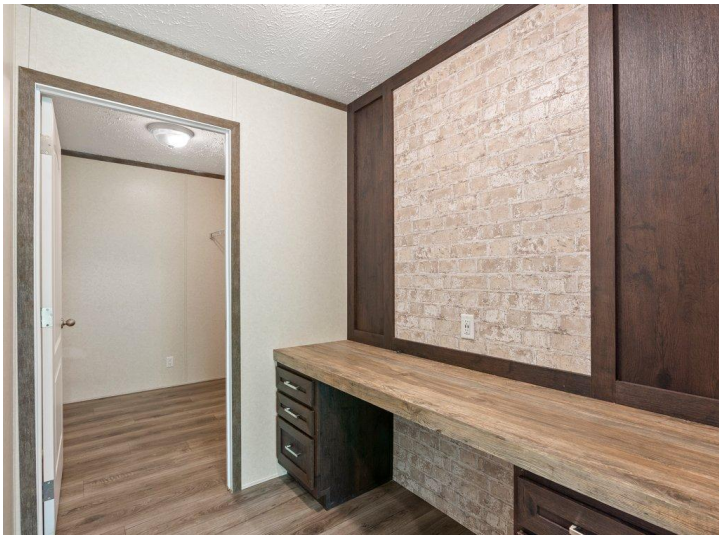
Affinity Real Estate - 600 Park Avenue South - Park Rapids MN 56470



website: www.AffinityRealEstate.com | email: info@affinityrealestate.com | office: 218-237-3333 | fax:218-237-3377



\$389,000
MLS 7086093 Residential
22668 299th Avenue
Akeley MN 56433



website: www.AffinityRealEstate.com | email: info@affinityrealestate.com | office: 218-237-3333 | fax:218-237-3377



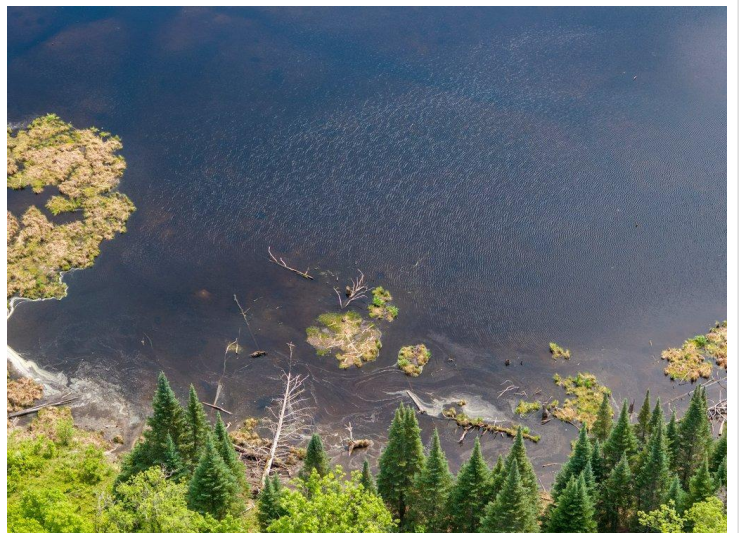
\$389,000
MLS 7086093 Residential
22668 299th Avenue
Akeley MN 56433



website: www.AffinityRealEstate.com | email: info@affinityrealestate.com | office: 218-237-3333 | fax:218-237-3377

Affinity
REAL ESTATE INC

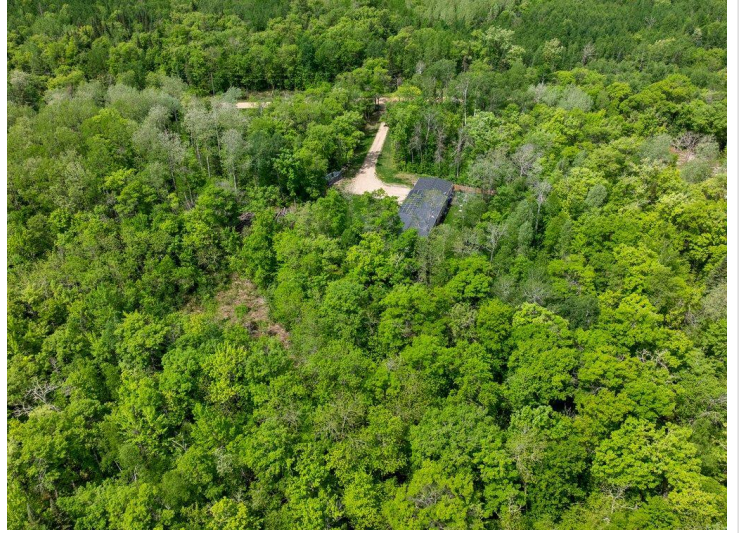
\$389,000
MLS 7086093 Residential
22668 299th Avenue
Akeley MN 56433



website: www.AffinityRealEstate.com | email: info@affinityrealestate.com | office: 218-237-3333 | fax:218-237-3377



\$389,000
MLS 7086093 Residential
22668 299th Avenue
Akeley MN 56433



website: www.AffinityRealEstate.com | email: info@affinityrealestate.com | office: 218-237-3333 | fax:218-237-3377



\$389,000
MLS 7086093 Residential
22668 299th Avenue
Akeley MN 56433



website: www.AffinityRealEstate.com | email: info@affinityrealestate.com | office: 218-237-3333 | fax:218-237-3377



\$389,000
MLS 7086093 Residential
22668 299th Avenue
Akeley MN 56433