



MLS 7086100 Lake Home

**\$1,195,000**

2,745 sq ft  
4 bedrooms  
2 baths

9260 Edgewater Circle  
Pequot Lakes MN 56472

Waterfront: Pelican

Status: Coming Soon

**Description:**

**FUN IN THE SUN & SAND!** This bright and cheerful 4-bedroom, 2-bath recently renovated lake home is situated on **PREMIER PELICAN LAKE**...offering 100' of perfect level elevation leading to one of the nicest sugar sand beaches in the entire area and nestled beneath a canopy of mature Pines with stunning views of Gooseberry Island. This home features a great open-floor plan with amazing views from nearly every room, a spacious living room with a wood-burning stone fireplace, a newly remodeled kitchen with new stainless-steel appliances, new flooring throughout, vaulted ceilings with beautiful rustic beam accents, a spectacular new spa-like bathroom on the main level and all-new lighting. The lower-level walkout offers a large family room with an additional wood-burning fireplace, a 2nd kitchen, laundry and additional bedrooms with the 4th doubling as an office area. Outside, you will enjoy park-like grounds with beautiful perennial gardens, a lakeside patio and a **BRAND-NEW** deck for relaxing with family and friends. There is also a 14x28 lakeside tuck-under garage space that could easily be finished...add windows or sliders and create additional lakeside living space, a private suite, workout room, bunk area, man cave...endless options for making it your own. This highly sought-after lake is known for its crystal-clear waters, fishing, tubing and relaxing boat rides with food and gas on the lake...Championship golf, bike trails, shopping, several dining choices close by!

**Additional Details:**

Year Built	1976
Lot Acres	33303
Lot Dimensions	100 x 348 x 105 x 317
Garage Stalls	3
School District	186
Taxes	\$5,636
Taxes with Assessments	\$5,636
Tax Year	2026

**Additional Features:**

**Basement:** Block, Egress Window(s), Finished, Full, Storage Space, Walkout **Fuel:** Electric **Garage:** 3 **Heat:** Baseboard, Dual Fuel/Off Peak **Sewer:** Private Sewer, Tank with Drainage Field **Water:** 4-Inch Submersible, Drilled, Private, Well **Air Conditioning:** Ductless Mini-Split

**Driving Directions:**

FROM I-35 ON RAMP 11, GO SOUTH ON I-35 FOR 1.5 MILES TO, LEFT ON EDGEWATER CIR. SIGN & PINE #9260 ON LEFT.

Affinity Real Estate Inc. participates in the Regional Multiple Listing Service of Minnesota, Inc Broker Reciprocity (sm) program, allowing us to display other broker's listings on our website. All properties are subject to prior sale, change or withdrawal.



**Call Affinity Real Estate**

**218-237-3333**

**info@affinityrealestate.com**



**Affinity Real Estate - 600 Park Avenue South - Park Rapids MN 56470**



website: [www.AffinityRealEstate.com](http://www.AffinityRealEstate.com) | email: [info@affinityrealestate.com](mailto:info@affinityrealestate.com) | office: 218-237-3333 | fax:218-237-3377



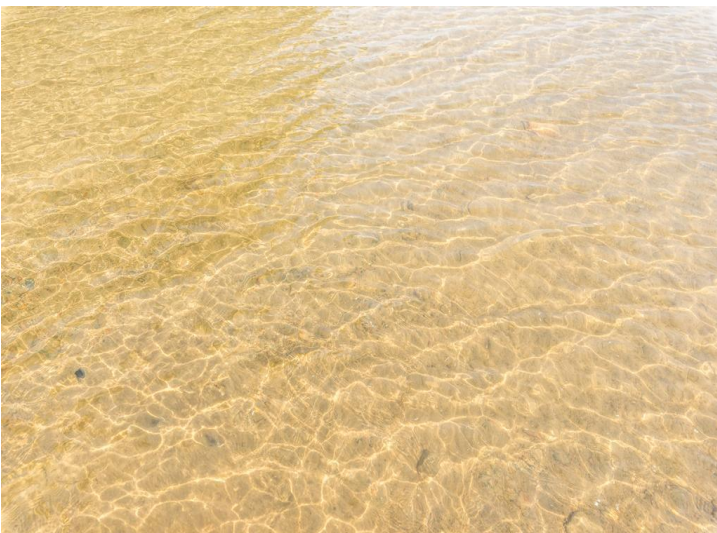
**\$1,195,000**  
MLS 7086100 Lake Home  
9260 Edgewater Circle  
Pequot Lakes MN 56472



website: [www.AffinityRealEstate.com](http://www.AffinityRealEstate.com) | email: [info@affinityrealestate.com](mailto:info@affinityrealestate.com) | office: 218-237-3333 | fax: 218-237-3377

**Affinity**  
REAL ESTATE INC

**\$1,195,000**  
MLS 7086100 Lake Home  
9260 Edgewater Circle  
Pequot Lakes MN 56472



website: [www.AffinityRealEstate.com](http://www.AffinityRealEstate.com) | email: [info@affinityrealestate.com](mailto:info@affinityrealestate.com) | office: 218-237-3333 | fax:218-237-3377

**Affinity**  
REAL ESTATE INC

**\$1,195,000**  
MLS 7086100 Lake Home  
9260 Edgewater Circle  
Pequot Lakes MN 56472



website: [www.AffinityRealEstate.com](http://www.AffinityRealEstate.com) | email: [info@affinityrealestate.com](mailto:info@affinityrealestate.com) | office: 218-237-3333 | fax:218-237-3377

**Affinity**  
REAL ESTATE INC

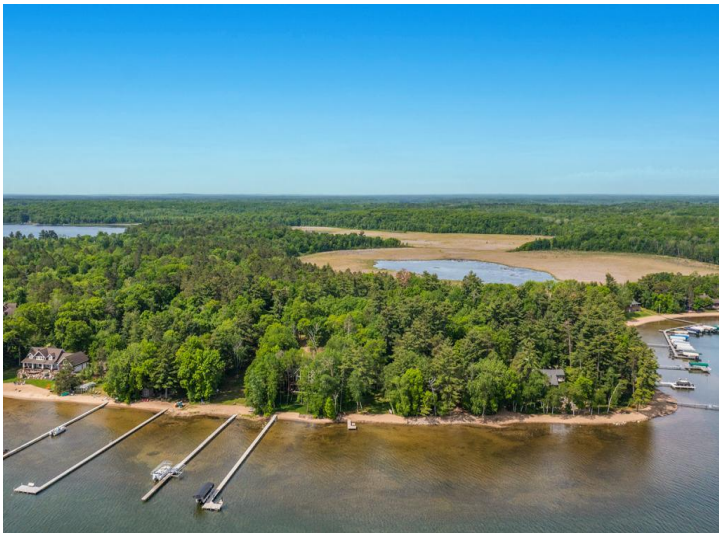
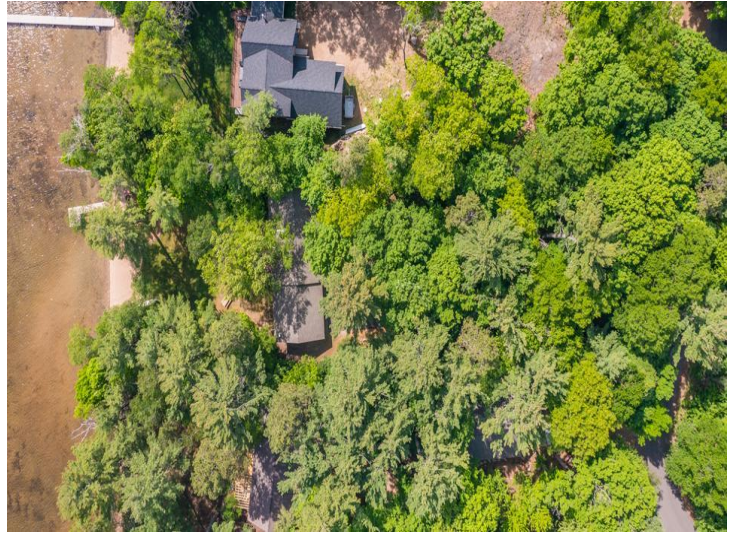
**\$1,195,000**  
MLS 7086100 Lake Home  
9260 Edgewater Circle  
Pequot Lakes MN 56472



website: [www.AffinityRealEstate.com](http://www.AffinityRealEstate.com) | email: [info@affinityrealestate.com](mailto:info@affinityrealestate.com) | office: 218-237-3333 | fax: 218-237-3377

**Affinity**  
REAL ESTATE INC

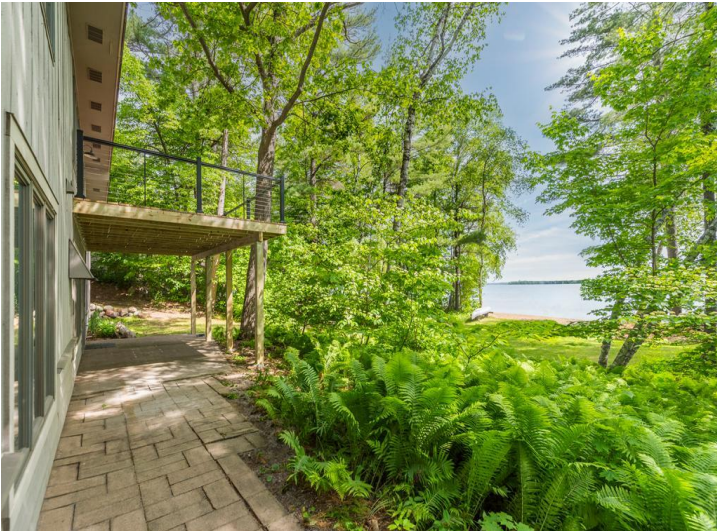
**\$1,195,000**  
MLS 7086100 Lake Home  
9260 Edgewater Circle  
Pequot Lakes MN 56472



website: [www.AffinityRealEstate.com](http://www.AffinityRealEstate.com) | email: [info@affinityrealestate.com](mailto:info@affinityrealestate.com) | office: 218-237-3333 | fax:218-237-3377



**\$1,195,000**  
MLS 7086100 Lake Home  
9260 Edgewater Circle  
Pequot Lakes MN 56472



website: [www.AffinityRealEstate.com](http://www.AffinityRealEstate.com) | email: [info@affinityrealestate.com](mailto:info@affinityrealestate.com) | office: 218-237-3333 | fax:218-237-3377



**\$1,195,000**  
MLS 7086100 Lake Home  
9260 Edgewater Circle  
Pequot Lakes MN 56472



website: [www.AffinityRealEstate.com](http://www.AffinityRealEstate.com) | email: [info@affinityrealestate.com](mailto:info@affinityrealestate.com) | office: 218-237-3333 | fax:218-237-3377



**\$1,195,000**  
MLS 7086100 Lake Home  
9260 Edgewater Circle  
Pequot Lakes MN 56472