



MLS 7086134 Lake Home

\$1,200,000

3,100 sq ft
6 bedrooms
3 baths

18882 Blackduck Lake Road
Hines MN 56647

Waterfront: Blackduck


Status: Active

Description:

Just steps from the shores of Blackduck Lake, this spacious 6-bedroom, 3-bath lakefront retreat offers the perfect blend of Northwoods charm and upscale modern comfort. Located in the highly desirable White Birch Association, this property is ideal as a year-round residence, vacation getaway, or income-producing rental. Experience effortless lake living with multiple outdoor spaces designed for relaxation and entertainment. It's the perfect place to relax after a day on the water or an afternoon of world-class walleye fishing. This custom-built lake home has an exterior constructed of country-hewn log siding, cedar board and batten siding, cedar shake shingles, and custom rock finishes. Inside the home, you will find a welcoming open-concept living area with a beautiful stone gas fireplace and a dining area, offering plenty of space for gathering with family and friends. The well-appointed kitchen is designed for easy entertaining, featuring double refrigerators and double ovens. Authentic pine hardwood, ceramic tile, and carpet flooring run throughout the home, complemented by ceramic tile and granite countertops. Enjoy the main floor bathroom with a relaxing jetted jacuzzi tub. With six generously sized bedrooms, three full baths, two separate living areas, a loft, and plenty of room to spread out, everyone can enjoy privacy while still coming together to make lasting memories. Situated on one of Minnesota's premier walleye lakes, this home is within walking distance of the beach and dock. White Birch Association is just minutes from dining, golf, and shopping, with the town of Blackduck only 5 minutes away, and feeds off north of Bemidji, just 25 minutes away for additional amenities. Canada is an hour and a half drive away! Nearby communities also include Grand Rapids, Walker, Upper Red Lake, and Northome. Despite its convenient location, the property is tucked into a peaceful, private neighborhood that reflects the relaxed charm of lake life. Whether you're searching for your forever home, a seasonal escape, or an investment opportunity, White Birch Association offers the ultimate Minnesota lake lifestyle. Let the association handle the grounds maintenance while you focus on enjoying lake life and all the amenities and activities that White Birch Resort has to offer.

Additional Details:

| | |
|------------------------|------|
| Year Built | 2009 |
| Lot Dimensions | TBD |
| School District | 32 |
| Taxes | \$1 |
| Taxes with Assessments | \$1 |
| Tax Year | 2026 |

 Listed By:
Realty Experts, LLC
Fuel, propane heat, Forced Air
Affinity Real Estate Inc. participates in the Regional Multiple Listing Service of Minnesota, Inc Broker Reciprocity (sm) program, allowing us to display other broker's listings on our website. All properties are subject to prior sale, change of withdrawal.
From Highway 71 N in Blackduck, turn west on Blackduck Lake Rd, then right (by golf Point Ln, take the first right, and the home will be on your left.



Call Affinity Real Estate
218-237-3333
info@affinityrealestate.com

   : Lake Rd. Left at North
Affinity Real Estate - 600 Park Avenue South - Park Rapids MN 56470



website: www.AffinityRealEstate.com | email: info@affinityrealestate.com | office: 218-237-3333 | fax:218-237-3377



\$1,200,000
MLS 7086134 Lake Home
18882 Blackduck Lake Road
Hines MN 56647



website: www.AffinityRealEstate.com | email: info@affinityrealestate.com | office: 218-237-3333 | fax: 218-237-3377

Affinity
REAL ESTATE INC

\$1,200,000
MLS 7086134 Lake Home
18882 Blackduck Lake Road
Hines MN 56647



website: www.AffinityRealEstate.com | email: info@affinityrealestate.com | office: 218-237-3333 | fax:218-237-3377

Affinity
REAL ESTATE INC

\$1,200,000
MLS 7086134 Lake Home
18882 Blackduck Lake Road
Hines MN 56647



website: www.AffinityRealEstate.com | email: info@affinityrealestate.com | office: 218-237-3333 | fax: 218-237-3377

Affinity
REAL ESTATE INC

\$1,200,000
MLS 7086134 Lake Home
18882 Blackduck Lake Road
Hines MN 56647



website: www.AffinityRealEstate.com | email: info@affinityrealestate.com | office: 218-237-3333 | fax:218-237-3377



\$1,200,000
MLS 7086134 Lake Home
18882 Blackduck Lake Road
Hines MN 56647



website: www.AffinityRealEstate.com | email: info@affinityrealestate.com | office: 218-237-3333 | fax:218-237-3377

Affinity
REAL ESTATE INC

\$1,200,000
MLS 7086134 Lake Home
18882 Blackduck Lake Road
Hines MN 56647



website: www.AffinityRealEstate.com | email: info@affinityrealestate.com | office: 218-237-3333 | fax: 218-237-3377

Affinity
REAL ESTATE INC

\$1,200,000
MLS 7086134 Lake Home
18882 Blackduck Lake Road
Hines MN 56647



website: www.AffinityRealEstate.com | email: info@affinityrealestate.com | office: 218-237-3333 | fax:218-237-3377

Affinity
REAL ESTATE INC

\$1,200,000
MLS 7086134 Lake Home
18882 Blackduck Lake Road
Hines MN 56647



website: www.AffinityRealEstate.com | email: info@affinityrealestate.com | office: 218-237-3333 | fax:218-237-3377

Affinity
REAL ESTATE INC

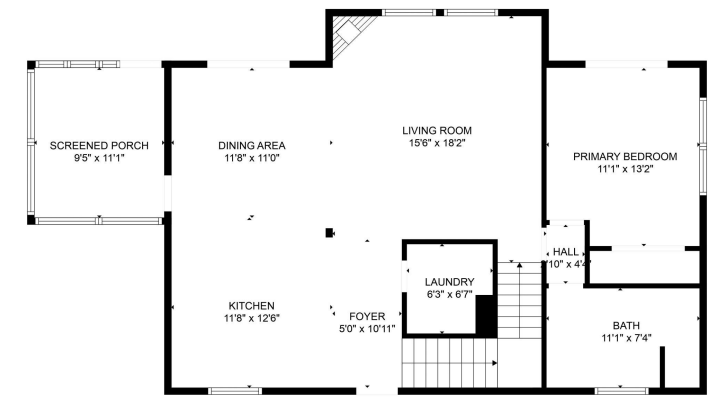
\$1,200,000
MLS 7086134 Lake Home
18882 Blackduck Lake Road
Hines MN 56647



website: www.AffinityRealEstate.com | email: info@affinityrealestate.com | office: 218-237-3333 | fax:218-237-3377



\$1,200,000
MLS 7086134 Lake Home
18882 Blackduck Lake Road
Hines MN 56647

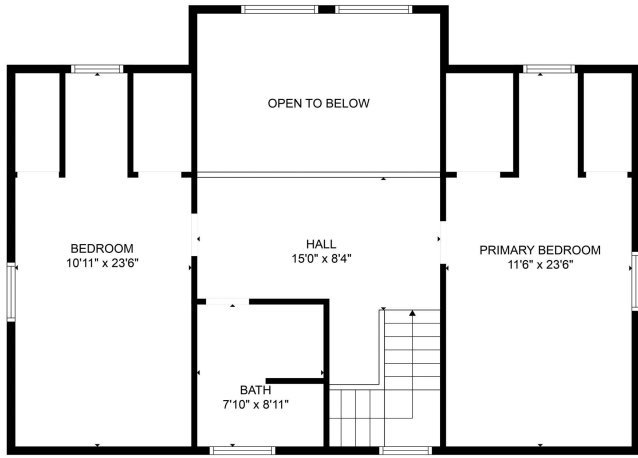


FLOOR PLAN CREATED BY CURBCASA APP. MEASUREMENTS DEEMED HIGHLY RELIABLE BUT NOT GUARANTEED.

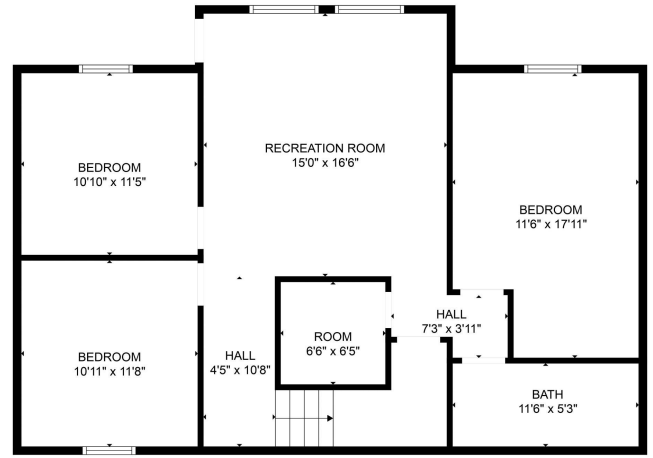
website: www.AffinityRealEstate.com | email: info@affinityrealestate.com | office: 218-237-3333 | fax: 218-237-3377



\$1,200,000
 MLS 7086134 Lake Home
 18882 Blackduck Lake Road
 Hines MN 56647



FLOOR PLAN CREATED BY CUBICASA APP. MEASUREMENTS DEEMED HIGHLY RELIABLE BUT NOT GUARANTEED.



FLOOR PLAN CREATED BY CUBICASA APP. MEASUREMENTS DEEMED HIGHLY RELIABLE BUT NOT GUARANTEED.



website: www.AffinityRealEstate.com | email: info@affinityrealestate.com | office: 218-237-3333 | fax: 218-237-3377



\$1,200,000
 MLS 7086134 Lake Home
 18882 Blackduck Lake Road
 Hines MN 56647



website: www.AffinityRealEstate.com | email: info@affinityrealestate.com | office: 218-237-3333 | fax:218-237-3377



\$1,200,000
MLS 7086134 Lake Home
18882 Blackduck Lake Road
Hines MN 56647



website: www.AffinityRealEstate.com | email: info@affinityrealestate.com | office: 218-237-3333 | fax: 218-237-3377

Affinity
REAL ESTATE INC

\$1,200,000
MLS 7086134 Lake Home
18882 Blackduck Lake Road
Hines MN 56647



website: www.AffinityRealEstate.com | email: info@affinityrealestate.com | office: 218-237-3333 | fax:218-237-3377



\$1,200,000
MLS 7086134 Lake Home
18882 Blackduck Lake Road
Hines MN 56647



website: www.AffinityRealEstate.com | email: info@affinityrealestate.com | office: 218-237-3333 | fax:218-237-3377



\$1,200,000
MLS 7086134 Lake Home
18882 Blackduck Lake Road
Hines MN 56647



website: www.AffinityRealEstate.com | email: info@affinityrealestate.com | office: 218-237-3333 | fax:218-237-3377



\$1,200,000
MLS 7086134 Lake Home
18882 Blackduck Lake Road
Hines MN 56647