



MLS 7086139 Land

\$395,000

120.9 Acres
Other

TBD Crooked Lake Twp
Outing MN 56662

Status: Active

Description:

Secluded 120-Acre Hunting Retreat!

Escape to your own private getaway with this 28' x 32' cabin nestled on 120 acres of prime hunting and recreational land with included deer stands throughout. The cabin features 2 bedrooms with multiple bunk beds, providing plenty of sleeping space for family and friends. Enjoy peaceful mornings and relaxing evenings on the spacious deck overlooking the surrounding woods and wildlife.

Designed for off-grid living, the cabin is wired for generator or battery power and is heated by a cozy wood stove. An outhouse is conveniently located nearby. With no water or electric service, this property offers the perfect opportunity to disconnect and enjoy nature, privacy, hunting, hiking, and outdoor adventure.

Whether you're looking for a hunting camp, weekend retreat, or a place to make lasting memories, this secluded property has it all and the deerstands stay!! Road in is minimum maintenance and 4 wheel drive truck or ATV is needed, no car travel suggested.

Additional Details:

Lot Acres	120.9
Lot Dimensions	irreg.
School District	118
Taxes	\$1,614
Taxes with Assessments	\$1,700
Tax Year	2025

Additional Features:

Driving Directions:

From Outing go East on County Road 58 NE to left on W. Levitt Rd NE, at the curve to the right go straight onto the trail follow (some water holes but they have hard bottoms. I would not drive a car :). stay right to the sign and property on the left. From the tar to the property is about 1.6 miles



Listed By:
Kurilla Real Estate LTD

Affinity Real Estate Inc. participates in the Regional Multiple Listing Service of Minnesota, Inc Broker Reciprocity (sm) program, allowing us to display other broker's listings on our website. All properties are subject to prior sale, change or withdrawal.



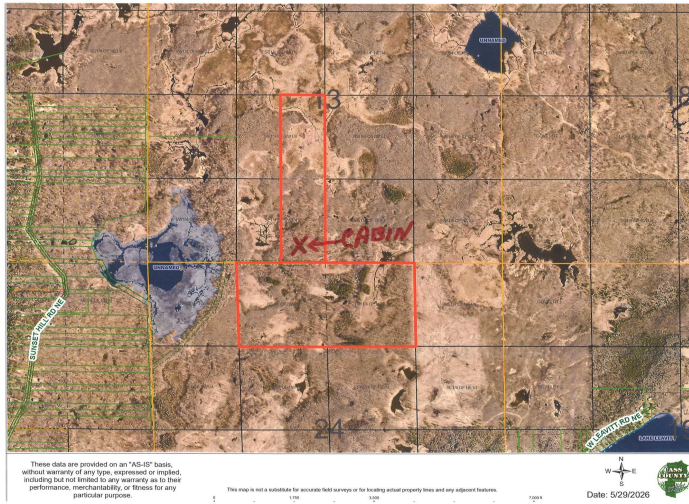
Call Affinity Real Estate

218-237-3333

info@affinityrealestate.com



Affinity Real Estate - 600 Park Avenue South - Park Rapids MN 56470



website: www.AffinityRealEstate.com | email: info@affinityrealestate.com | office: 218-237-3333 | fax: 218-237-3377



\$395,000
 MLS 7086139 Land
 TBD Crooked Lake Twp
 Outing MN 56662



website: www.AffinityRealEstate.com | email: info@affinityrealestate.com | office: 218-237-3333 | fax:218-237-3377



\$395,000
MLS 7086139 Land
TBD Crooked Lake Twp
Outing MN 56662



website: www.AffinityRealEstate.com | email: info@affinityrealestate.com | office: 218-237-3333 | fax: 218-237-3377

Affinity
REAL ESTATE INC

\$395,000
MLS 7086139 Land
TBD Crooked Lake Twp
Outing MN 56662



website: www.AffinityRealEstate.com | email: info@affinityrealestate.com | office: 218-237-3333 | fax:218-237-3377

Affinity
REAL ESTATE INC

\$395,000
MLS 7086139 Land
TBD Crooked Lake Twp
Outing MN 56662



website: www.AffinityRealEstate.com | email: info@affinityrealestate.com | office: 218-237-3333 | fax:218-237-3377



\$395,000
MLS 7086139 Land
TBD Crooked Lake Twp
Outing MN 56662