



MLS 7086210 Lake Land

**\$695,000**

**Description:**

Beautiful Roy Lake Property – 1.33 Acres

Enjoy the privacy and natural beauty of this 1.33-acre wooded lot near Roy Lake. Surrounded by mature trees and scenic views, this property offers the perfect setting to build your dream home or getaway retreat. Conveniently located within a short distance of Nisswa, you'll enjoy easy access to fine dining, unique shopping, and some of the area's premier championship golf courses. Create lasting memories in the heart of Minnesota's lake country. Your dream home starts here!

**Additional Details:**

Lot Acres	1.33
Lot Dimensions	126x592x80x35x351
School District	181
Taxes	\$4,084
Taxes with Assessments	\$4,084
Tax Year	2026

**Additional Features:**

**Driving Directions:**

In Nisswa go West on County Road 77 to right on Lower Roy Lake Road. Follow to the corner then turn left on Nod a Way Road. Go straight to #4294 and Sign.



Listed By:  
Kurilla Real Estate LTD

Affinity Real Estate Inc. participates in the Regional Multiple Listing Service of Minnesota, Inc Broker Reciprocity (sm) program, allowing us to display other broker's listings on our website. All properties are subject to prior sale, change or withdrawal.



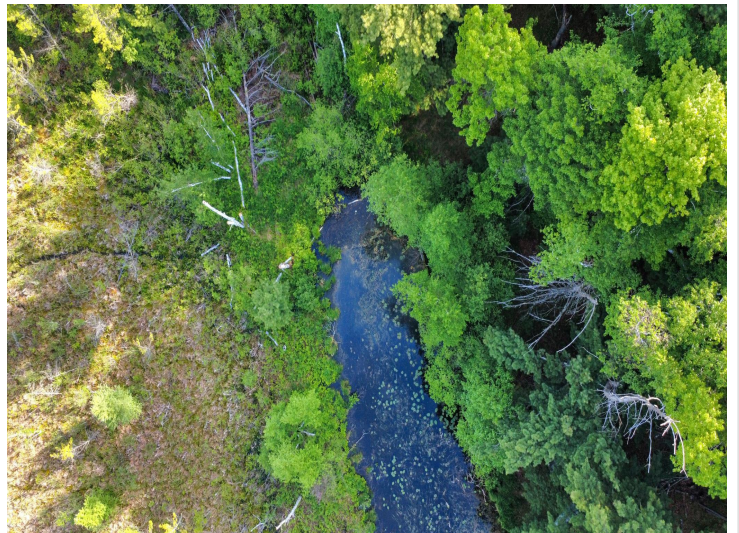
**Call Affinity Real Estate**

**218-237-3333**

**info@affinityrealestate.com**



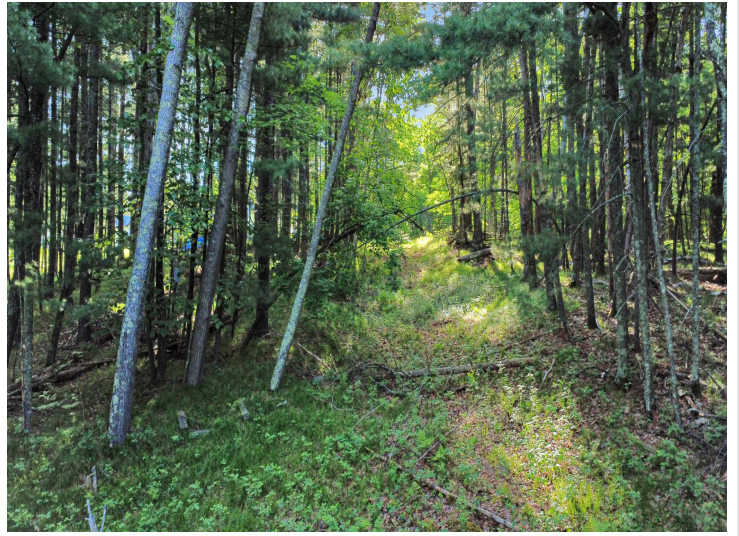
**Affinity Real Estate - 600 Park Avenue South - Park Rapids MN 56470**



website: [www.AffinityRealEstate.com](http://www.AffinityRealEstate.com) | email: [info@affinityrealestate.com](mailto:info@affinityrealestate.com) | office: 218-237-3333 | fax:218-237-3377

**Affinity**  
REAL ESTATE INC

**\$695,000**  
MLS 7086210 Lake Land  
4294 Nod A Way Drive  
Nisswa MN 56468



website: [www.AffinityRealEstate.com](http://www.AffinityRealEstate.com) | email: [info@affinityrealestate.com](mailto:info@affinityrealestate.com) | office: 218-237-3333 | fax:218-237-3377



**\$695,000**  
MLS 7086210 Lake Land  
4294 Nod A Way Drive  
Nisswa MN 56468



website: [www.AffinityRealEstate.com](http://www.AffinityRealEstate.com) | email: [info@affinityrealestate.com](mailto:info@affinityrealestate.com) | office: 218-237-3333 | fax:218-237-3377



**\$695,000**  
MLS 7086210 Lake Land  
4294 Nod A Way Drive  
Nisswa MN 56468



These data are provided on an "AS-IS" basis, without warranty of any type, expressed or implied, including but not limited to any warranty as to their performance, merchantability, or fitness for any particular purpose.



website: [www.AffinityRealEstate.com](http://www.AffinityRealEstate.com) | email: [info@affinityrealestate.com](mailto:info@affinityrealestate.com) | office: 218-237-3333 | fax:218-237-3377



**\$695,000**  
 MLS 7086210 Lake Land  
 4294 Nod A Way Drive  
 Nisswa MN 56468