



MLS 7086234 Lake Home

\$799,900

2,744 sq ft
4 bedrooms
3 baths

16170 Maple Ridge Road
Audubon MN 56511

Waterfront: Little Cormorant

Status: Active

Description:

Little Cormorant Lake! Set on a private ¾-acre lot with 170 feet of shoreline, this 4 bed, 3 bath home offers beautiful sunset views and a screened porch overlooking the water. Enjoy privacy, mature trees, and a variety of fruit trees throughout the property. Features include an electric sauna, lake pump irrigation system, and a spacious 24x40 heated garage with new garage doors in 2026. A great opportunity to enjoy lake life with plenty of space to relax and entertain. Own in time for Summer 2026!

Additional Details:

Year Built	1972
Lot Acres	0.78
Lot Dimensions	irregular
Garage Stalls	2
School District	2889
Taxes	\$3,952
Taxes with Assessments	\$3,952
Tax Year	2025

Additional Features:

Basement: Finished, Walkout **Fuel:** Propane **Garage:** 2 **Heat:** Forced Air **Sewer:** Septic System Compliant - Yes **Water:** 4-Inch Submersible **Air Conditioning:** Central Air

Driving Directions:

S from Hwy 10 on Co 11 to Maple Ridge.
Head West, Property on the right



Listed By:
REMAX Lakes Region

Affinity Real Estate Inc. participates in the Regional Multiple Listing Service of Minnesota, Inc Broker Reciprocity (sm) program, allowing us to display other broker's listings on our website. All properties are subject to prior sale, change or withdrawal.



Call Affinity Real Estate

218-237-3333

info@affinityrealestate.com



Affinity Real Estate - 600 Park Avenue South - Park Rapids MN 56470



website: www.AffinityRealEstate.com | email: info@affinityrealestate.com | office: 218-237-3333 | fax:218-237-3377

Affinity
REAL ESTATE INC

\$799,900
MLS 7086234 Lake Home
16170 Maple Ridge Road
Audubon MN 56511



website: www.AffinityRealEstate.com | email: info@affinityrealestate.com | office: 218-237-3333 | fax:218-237-3377

Affinity
REAL ESTATE INC

\$799,900
MLS 7086234 Lake Home
16170 Maple Ridge Road
Audubon MN 56511



website: www.AffinityRealEstate.com | email: info@affinityrealestate.com | office: 218-237-3333 | fax:218-237-3377

Affinity
REAL ESTATE INC

\$799,900
MLS 7086234 Lake Home
16170 Maple Ridge Road
Audubon MN 56511



website: www.AffinityRealEstate.com | email: info@affinityrealestate.com | office: 218-237-3333 | fax:218-237-3377



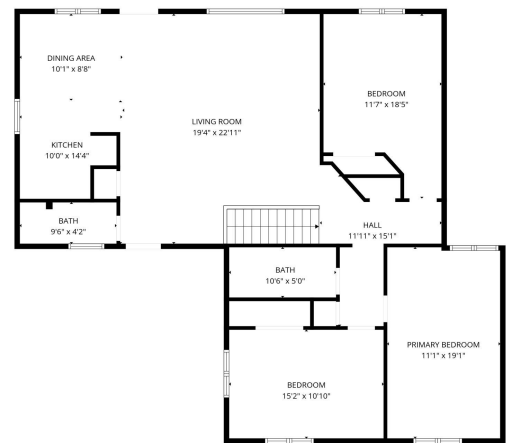
\$799,900
MLS 7086234 Lake Home
16170 Maple Ridge Road
Audubon MN 56511



website: www.AffinityRealEstate.com | email: info@affinityrealestate.com | office: 218-237-3333 | fax:218-237-3377



\$799,900
MLS 7086234 Lake Home
16170 Maple Ridge Road
Audubon MN 56511

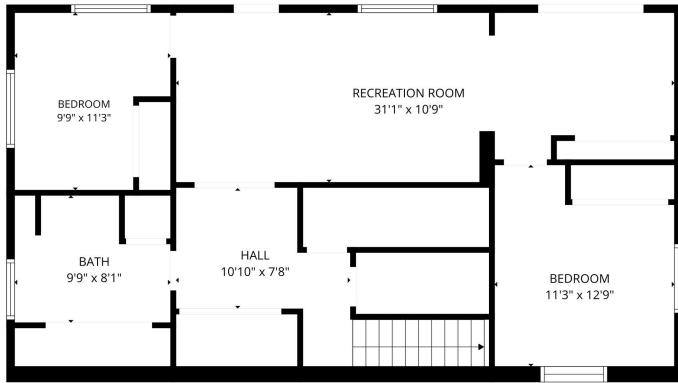


FLOOR PLAN CREATED BY CUBICASA APP. MEASUREMENTS DEEMED HIGHLY RELIABLE BUT NOT GUARANTEED.

website: www.AffinityRealEstate.com | email: info@affinityrealestate.com | office: 218-237-3333 | fax: 218-237-3377



\$799,900
 MLS 7086234 Lake Home
 16170 Maple Ridge Road
 Audubon MN 56511



FLOOR PLAN CREATED BY CURICASA APP. MEASUREMENTS DEEMED HIGHLY RELIABLE BUT NOT GUARANTEED.



website: www.AffinityRealEstate.com | email: info@affinityrealestate.com | office: 218-237-3333 | fax:218-237-3377



\$799,900
MLS 7086234 Lake Home
16170 Maple Ridge Road
Audubon MN 56511