



MLS 7086264 Farm

\$499,900

10.14 Acres

8011 Birchmont Beach Road
Bemidji MN 56601

Status: Active

Description:

10 acres with VERY high end buildings to build you dream home on! Run a horse business, start a kennel, make it a hockey arena or even custom storage-this property has the capability to do anything!

Additional Details:

Year Built	2003
Lot Acres	10.14
Lot Dimensions	565x903x300x269x283x632
Garage Stalls	10
School District	31
Taxes	\$3,226
Taxes with Assessments	\$3,226
Tax Year	2026

Additional Features:

Basement: None **Fuel:** Propane **Garage:** 10 **Heat:** Forced Air **Sewer:** Private Sewer, Septic System Compliant - Yes **Water:** None **Air Conditioning:** Central Air

Driving Directions:

N on Great River Road, R on Birchmont Beach Rd NE, home is down 2 miles on the left.



Listed By:
Legacy Home Group MN LLC

Affinity Real Estate Inc. participates in the Regional Multiple Listing Service of Minnesota, Inc Broker Reciprocity (sm) program, allowing us to display other broker's listings on our website. All properties are subject to prior sale, change or withdrawal.



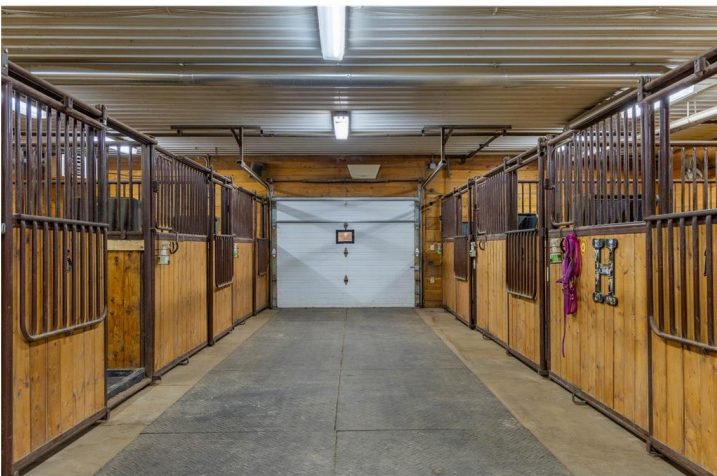
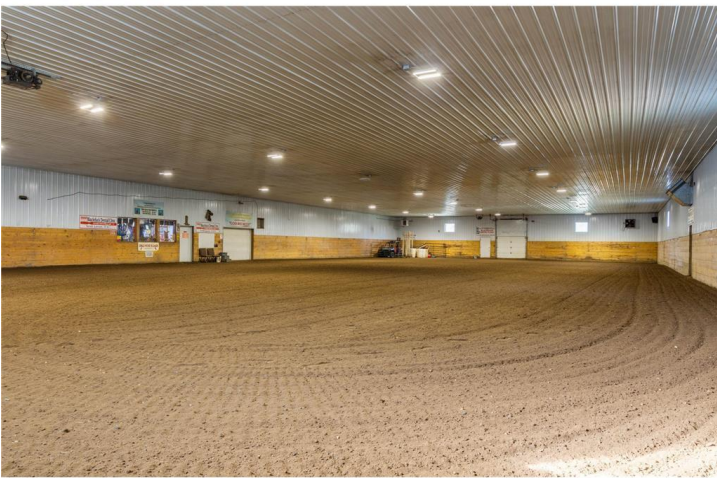
Call Affinity Real Estate

218-237-3333

info@affinityrealestate.com



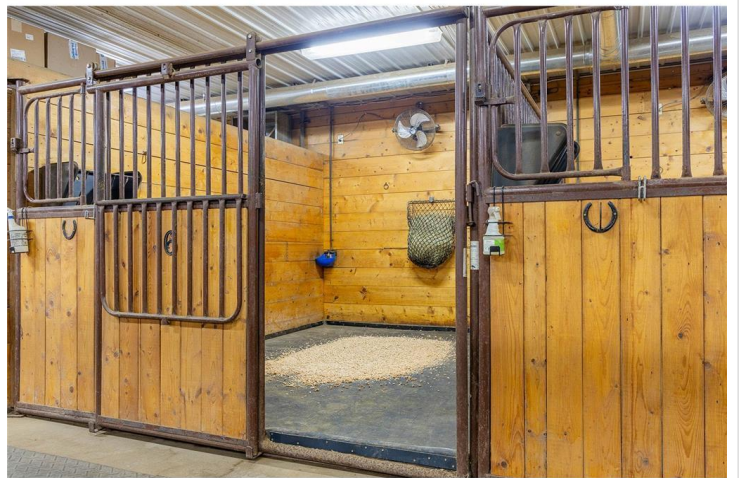
Affinity Real Estate - 600 Park Avenue South - Park Rapids MN 56470



website: www.AffinityRealEstate.com | email: info@affinityrealestate.com | office: 218-237-3333 | fax:218-237-3377



\$499,900
MLS 7086264 Farm
8011 Birchmont Beach Road
Bemidji MN 56601



website: www.AffinityRealEstate.com | email: info@affinityrealestate.com | office: 218-237-3333 | fax:218-237-3377



\$499,900
MLS 7086264 Farm
8011 Birchmont Beach Road
Bemidji MN 56601