



MLS 7086371 Lake Home

**\$499,775**

1,150 sq ft  
2 bedrooms  
2 baths

15841 Sandy Beach Road  
Mentor MN 56736

Waterfront: Maple

Status: Active

**Description:**

Enjoy lake life at Maple lake at this cute 2-bedroom, 2-bath cabin featuring 100' overlooking Maple Lake. Additional space for extra sleeping accommodations + main-floor laundry. Take in the views from the screened-in patio off the back or soak up the sun on the lakeside patio with pergola. The large 125' back lot includes an oversized 30x40 heated garage, providing plenty of room for vehicles & toys.

**Additional Details:**

Year Built	1960
Lot Acres	0.891
Lot Dimensions	irreg
Garage Stalls	3
School District	2609
Taxes	\$3,005
Taxes with Assessments	\$3,434
Tax Year	2026

**Additional Features:**

**Basement:** None **Fuel:** Propane **Garage:** 3 **Heat:** Forced Air **Sewer:** Septic System Compliant - Yes **Water:** Well **Air Conditioning:** Central Air

**Driving Directions:**

Highway 10 south of Mentor to Sandy Beach



Listed By:  
Greenberg Realty

Affinity Real Estate Inc. participates in the Regional Multiple Listing Service of Minnesota, Inc Broker Reciprocity (sm) program, allowing us to display other broker's listings on our website. All properties are subject to prior sale, change or withdrawal.



**Call Affinity Real Estate**

**218-237-3333**

**info@affinityrealestate.com**



**Affinity Real Estate - 600 Park Avenue South - Park Rapids MN 56470**



website: [www.AffinityRealEstate.com](http://www.AffinityRealEstate.com) | email: [info@affinityrealestate.com](mailto:info@affinityrealestate.com) | office: 218-237-3333 | fax:218-237-3377



**\$499,775**  
MLS 7086371 Lake Home  
15841 Sandy Beach Road  
Mentor MN 56736



website: [www.AffinityRealEstate.com](http://www.AffinityRealEstate.com) | email: [info@affinityrealestate.com](mailto:info@affinityrealestate.com) | office: 218-237-3333 | fax:218-237-3377

**Affinity**  
REAL ESTATE INC

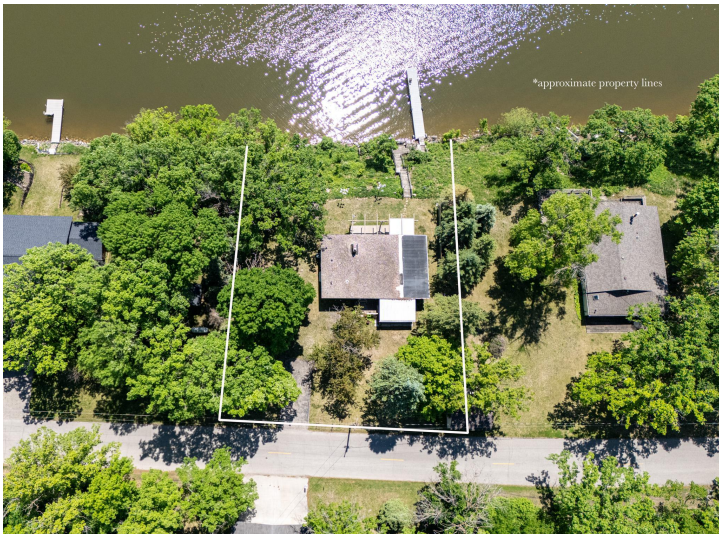
**\$499,775**  
MLS 7086371 Lake Home  
15841 Sandy Beach Road  
Mentor MN 56736



website: [www.AffinityRealEstate.com](http://www.AffinityRealEstate.com) | email: [info@affinityrealestate.com](mailto:info@affinityrealestate.com) | office: 218-237-3333 | fax:218-237-3377



**\$499,775**  
MLS 7086371 Lake Home  
15841 Sandy Beach Road  
Mentor MN 56736



website: [www.AffinityRealEstate.com](http://www.AffinityRealEstate.com) | email: [info@affinityrealestate.com](mailto:info@affinityrealestate.com) | office: 218-237-3333 | fax:218-237-3377



**\$499,775**  
MLS 7086371 Lake Home  
15841 Sandy Beach Road  
Mentor MN 56736



website: [www.AffinityRealEstate.com](http://www.AffinityRealEstate.com) | email: [info@affinityrealestate.com](mailto:info@affinityrealestate.com) | office: 218-237-3333 | fax: 218-237-3377

**Affinity**  
REAL ESTATE INC

**\$499,775**  
MLS 7086371 Lake Home  
15841 Sandy Beach Road  
Mentor MN 56736



website: [www.AffinityRealEstate.com](http://www.AffinityRealEstate.com) | email: [info@affinityrealestate.com](mailto:info@affinityrealestate.com) | office: 218-237-3333 | fax:218-237-3377

**Affinity**  
REAL ESTATE INC

**\$499,775**  
MLS 7086371 Lake Home  
15841 Sandy Beach Road  
Mentor MN 56736



website: [www.AffinityRealEstate.com](http://www.AffinityRealEstate.com) | email: [info@affinityrealestate.com](mailto:info@affinityrealestate.com) | office: 218-237-3333 | fax: 218-237-3377

**Affinity**  
REAL ESTATE INC

**\$499,775**  
MLS 7086371 Lake Home  
15841 Sandy Beach Road  
Mentor MN 56736