



MLS 7086392 Lake Home

**\$399,900**

1,940 sq ft  
3 bedrooms  
2 baths

13879 Sylvan Dam Road  
Pillager MN 56473

Waterfront: Crow Wing River

Status: Coming Soon

**Description:**

Nestled on 2.5 private acres along the beautiful Crow Wing River, this 3-bedroom, 2-bathroom home offers a peaceful retreat surrounded by nature. Enjoy a quiet, private oasis with a level yard, abundant wildlife, and excellent fishing right from your backyard. Outdoor features include a floating dock, riverside deck, and plenty of space to relax and take in the scenic river views. The attached garage features doors on both ends for added convenience and versatility. An outdoor wood boiler provides efficient heating, making this property ideal for year-round enjoyment. Whether you're seeking a full-time residence or a weekend getaway, this riverfront property offers privacy, recreation, and natural beauty in one exceptional package.

**Additional Details:**

Year Built	1988
Lot Acres	2.45
Lot Dimensions	507x298x306x396
Garage Stalls	2
School District	116
Taxes	\$1,674
Taxes with Assessments	\$1,740
Tax Year	2025

**Additional Features:**

**Fuel:** Electric, Wood **Heat:** Baseboard, Outdoor Boiler, Outdoor Furnace

**Driving Directions:**

From MN-210 W: Turn left onto 11th Ave SW/Hardy Lake Rd W, continue onto 11th Ave. Continue onto 136th St SW, turn left onto Sylvan Dam Rd SW, turn left to stay on Sylvan Dam Rd SW. Continue straight down gravel driveway to home.



Listed By:  
eXp Realty

Affinity Real Estate Inc. participates in the Regional Multiple Listing Service of Minnesota, Inc Broker Reciprocity (sm) program, allowing us to display other broker's listings on our website. All properties are subject to prior sale, change or withdrawal.



**Call Affinity Real Estate**

**218-237-3333**

**info@affinityrealestate.com**



**Affinity Real Estate - 600 Park Avenue South - Park Rapids MN 56470**



website: [www.AffinityRealEstate.com](http://www.AffinityRealEstate.com) | email: [info@affinityrealestate.com](mailto:info@affinityrealestate.com) | office: 218-237-3333 | fax:218-237-3377



**\$399,900**  
MLS 7086392 Lake Home  
13879 Sylvan Dam Road  
Pillager MN 56473



website: [www.AffinityRealEstate.com](http://www.AffinityRealEstate.com) | email: [info@affinityrealestate.com](mailto:info@affinityrealestate.com) | office: 218-237-3333 | fax:218-237-3377

**Affinity**  
REAL ESTATE INC

**\$399,900**  
MLS 7086392 Lake Home  
13879 Sylvan Dam Road  
Pillager MN 56473



website: [www.AffinityRealEstate.com](http://www.AffinityRealEstate.com) | email: [info@affinityrealestate.com](mailto:info@affinityrealestate.com) | office: 218-237-3333 | fax: 218-237-3377

**Affinity**  
REAL ESTATE INC

**\$399,900**  
MLS 7086392 Lake Home  
13879 Sylvan Dam Road  
Pillager MN 56473



website: [www.AffinityRealEstate.com](http://www.AffinityRealEstate.com) | email: [info@affinityrealestate.com](mailto:info@affinityrealestate.com) | office: 218-237-3333 | fax: 218-237-3377

**Affinity**  
REAL ESTATE INC

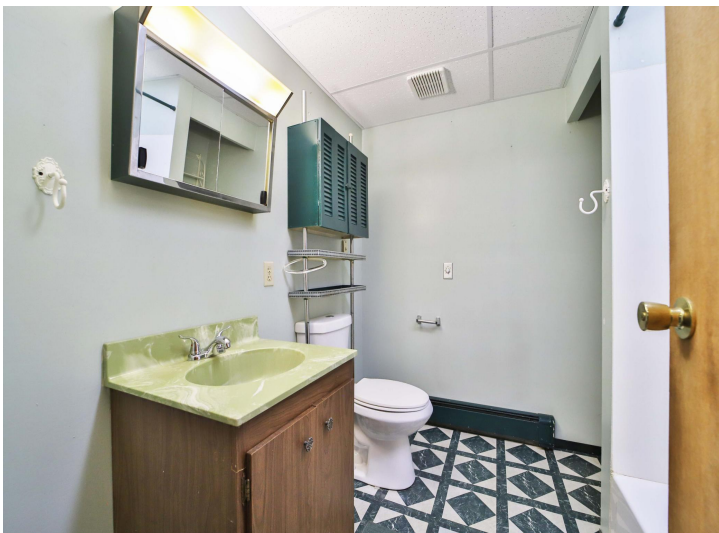
**\$399,900**  
MLS 7086392 Lake Home  
13879 Sylvan Dam Road  
Pillager MN 56473



website: [www.AffinityRealEstate.com](http://www.AffinityRealEstate.com) | email: [info@affinityrealestate.com](mailto:info@affinityrealestate.com) | office: 218-237-3333 | fax: 218-237-3377

**Affinity**  
REAL ESTATE INC

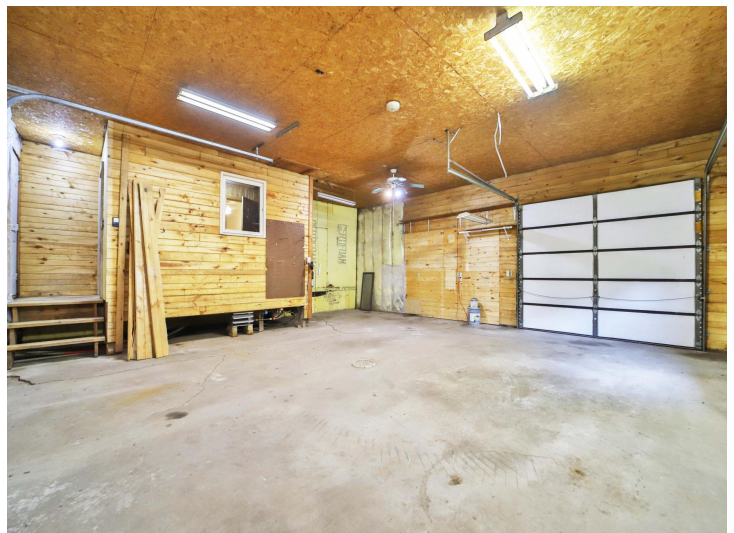
**\$399,900**  
MLS 7086392 Lake Home  
13879 Sylvan Dam Road  
Pillager MN 56473



website: [www.AffinityRealEstate.com](http://www.AffinityRealEstate.com) | email: [info@affinityrealestate.com](mailto:info@affinityrealestate.com) | office: 218-237-3333 | fax:218-237-3377



**\$399,900**  
MLS 7086392 Lake Home  
13879 Sylvan Dam Road  
Pillager MN 56473



website: [www.AffinityRealEstate.com](http://www.AffinityRealEstate.com) | email: [info@affinityrealestate.com](mailto:info@affinityrealestate.com) | office: 218-237-3333 | fax:218-237-3377

**Affinity**  
REAL ESTATE INC

**\$399,900**  
MLS 7086392 Lake Home  
13879 Sylvan Dam Road  
Pillager MN 56473



website: [www.AffinityRealEstate.com](http://www.AffinityRealEstate.com) | email: [info@affinityrealestate.com](mailto:info@affinityrealestate.com) | office: 218-237-3333 | fax:218-237-3377



**\$399,900**  
MLS 7086392 Lake Home  
13879 Sylvan Dam Road  
Pillager MN 56473



website: [www.AffinityRealEstate.com](http://www.AffinityRealEstate.com) | email: [info@affinityrealestate.com](mailto:info@affinityrealestate.com) | office: 218-237-3333 | fax:218-237-3377

**Affinity**  
REAL ESTATE INC

**\$399,900**  
MLS 7086392 Lake Home  
13879 Sylvan Dam Road  
Pillager MN 56473



website: [www.AffinityRealEstate.com](http://www.AffinityRealEstate.com) | email: [info@affinityrealestate.com](mailto:info@affinityrealestate.com) | office: 218-237-3333 | fax:218-237-3377



**\$399,900**  
MLS 7086392 Lake Home  
13879 Sylvan Dam Road  
Pillager MN 56473



website: [www.AffinityRealEstate.com](http://www.AffinityRealEstate.com) | email: [info@affinityrealestate.com](mailto:info@affinityrealestate.com) | office: 218-237-3333 | fax:218-237-3377



**\$399,900**  
MLS 7086392 Lake Home  
13879 Sylvan Dam Road  
Pillager MN 56473