

MLS 7086439 Land

**\$69,900**

15.56 Acres  
Raw Land

TBD Frohn Road  
Bemidji MN 56601

Status: Active

**Description:**

Rare opportunity to find 15+ acres just minutes east of Bemidji in Frohn Township. Great spot to build a home or use for recreational purposes.

**Additional Details:**

Lot Acres	15.56
Lot Dimensions	330x1320 & 330x660
School District	31
Taxes	\$802
Taxes with Assessments	\$802
Tax Year	2026

**Additional Features:**

**Driving Directions:**

East on Roosevelt Rd, left on Frohn Rd .7 miles. Property is on the left side of the road.



Listed By:  
Century 21 Dickinson

Affinity Real Estate Inc. participates in the Regional Multiple Listing Service of Minnesota, Inc Broker Reciprocity (sm) program, allowing us to display other broker's listings on our website. All properties are subject to prior sale, change or withdrawal.



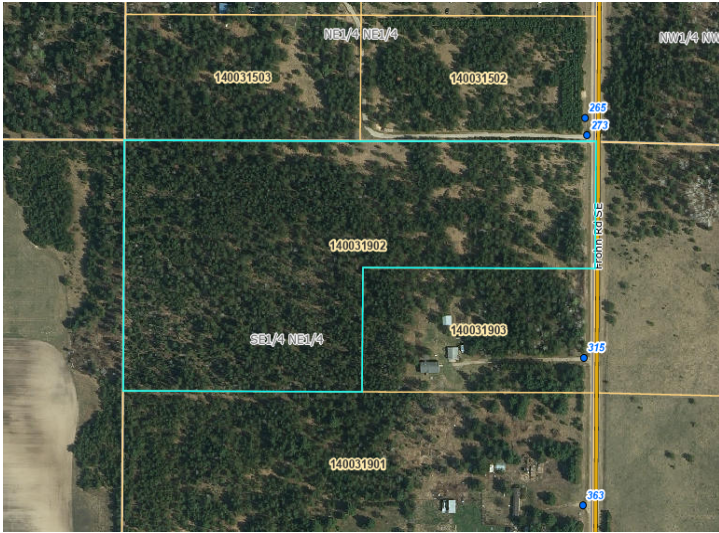
Call Affinity Real Estate

**218-237-3333**

[info@affinityrealestate.com](mailto:info@affinityrealestate.com)



Affinity Real Estate - 600 Park Avenue South - Park Rapids MN 56470



website: [www.AffinityRealEstate.com](http://www.AffinityRealEstate.com) | email: [info@affinityrealestate.com](mailto:info@affinityrealestate.com) | office: 218-237-3333 | fax:218-237-3377



**\$69,900**  
MLS 7086439 Land  
TBD Frohn Road  
Bemidji MN 56601