



MLS 7086791 Lake Land

\$474,900

Description:

Rare opportunity to own 80 acres of premier hunting and recreational land on beautiful Bad Axe Lake near Park Rapids. This diverse property features towering mature timber, scenic lake frontage, and multiple established clearings ideal for food plots or future improvements. Wildlife is abundant, with Whitetail deer, black bear, wild turkeys, grouse, and waterfowl. Hundreds of acres of adjoining county land provide direct access to additional public hunting, hiking, and outdoor exploration opportunities, greatly expanding your recreational footprint. Whether you're looking for a private hunting retreat, a secluded lakefront getaway, or an investment in Minnesota's Northwoods, this property offers the perfect combination of timber, wildlife habitat, and lake shore in a highly sought-after location. Don't sleep on this one. Come see it today!

Additional Details:

Lot Acres	80.4
Lot Dimensions	Irregular
School District	309
Taxes	\$2,134
Taxes with Assessments	\$2,134
Tax Year	2025

Additional Features:

Driving Directions:

From Park Rapids go North on County Hwy 4. In 11 miles turn right on 290th St. In 1 mile park in open area. Look for signage located on the North West corner of subject property.



Listed By:
Timber Ghost Realty, LLC

Affinity Real Estate Inc. participates in the Regional Multiple Listing Service of Minnesota, Inc Broker Reciprocity (sm) program, allowing us to display other broker's listings on our website. All properties are subject to prior sale, change or withdrawal.



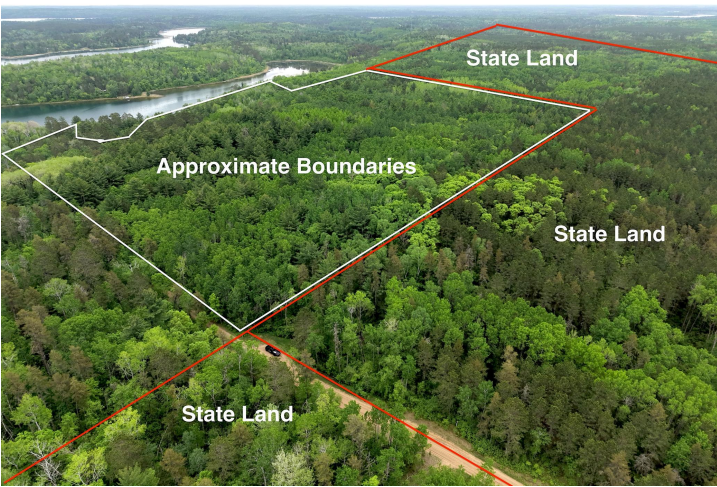
Call Affinity Real Estate

218-237-3333

info@affinityrealestate.com



Affinity Real Estate - 600 Park Avenue South - Park Rapids MN 56470



website: www.AffinityRealEstate.com | email: info@affinityrealestate.com | office: 218-237-3333 | fax:218-237-3377



\$474,900
MLS 7086791 Lake Land
TBD 290th Street
Park Rapids MN 56470



website: www.AffinityRealEstate.com | email: info@affinityrealestate.com | office: 218-237-3333 | fax:218-237-3377



\$474,900
MLS 7086791 Lake Land
TBD 290th Street
Park Rapids MN 56470



website: www.AffinityRealEstate.com | email: info@affinityrealestate.com | office: 218-237-3333 | fax:218-237-3377



\$474,900
MLS 7086791 Lake Land
TBD 290th Street
Park Rapids MN 56470



website: www.AffinityRealEstate.com | email: info@affinityrealestate.com | office: 218-237-3333 | fax:218-237-3377



\$474,900
MLS 7086791 Lake Land
TBD 290th Street
Park Rapids MN 56470



website: www.AffinityRealEstate.com | email: info@affinityrealestate.com | office: 218-237-3333 | fax:218-237-3377



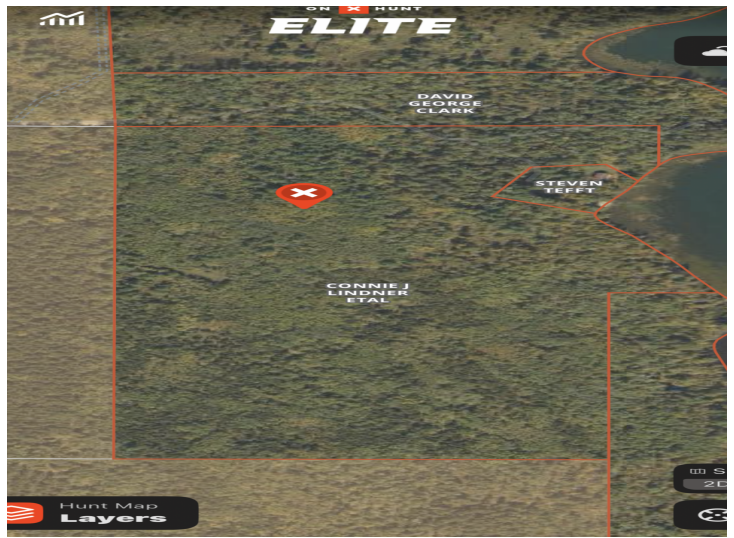
\$474,900
MLS 7086791 Lake Land
TBD 290th Street
Park Rapids MN 56470



website: www.AffinityRealEstate.com | email: info@affinityrealestate.com | office: 218-237-3333 | fax:218-237-3377



\$474,900
MLS 7086791 Lake Land
TBD 290th Street
Park Rapids MN 56470



website: www.AffinityRealEstate.com | email: info@affinityrealestate.com | office: 218-237-3333 | fax:218-237-3377



\$474,900
 MLS 7086791 Lake Land
 TBD 290th Street
 Park Rapids MN 56470