

MLS 7086821 Land

\$85,000

10.02 Acres
Raw Land

37791 423rd Street
Dent MN 56528

Status: Active

Description:

Enjoy beautiful views with this 10.02-acre combined parcel in the heart of Lakes Country, offering serenity and endless possibilities. Build your dream home, cabin, shop, or barndominium with no builder restrictions or covenants. Enjoy the natural landscape with no need to clear trees. Just choose your building site and start creating your perfect getaway.

Additional Details:

Lot Acres	10.02
Lot Dimensions	617x669+-
School District	549
Taxes	\$488
Taxes with Assessments	\$488
Tax Year	2026

Additional Features:

Driving Directions:

From Dent take the Otter Trail scenic byway (35). Turn right onto 423rd St and follow that until you see 37791 423rd on the left. Both parcels are next to each other.



Listed By:
Coldwell Banker Preferred Partners

Affinity Real Estate Inc. participates in the Regional Multiple Listing Service of Minnesota, Inc Broker Reciprocity (sm) program, allowing us to display other broker's listings on our website. All properties are subject to prior sale, change or withdrawal.



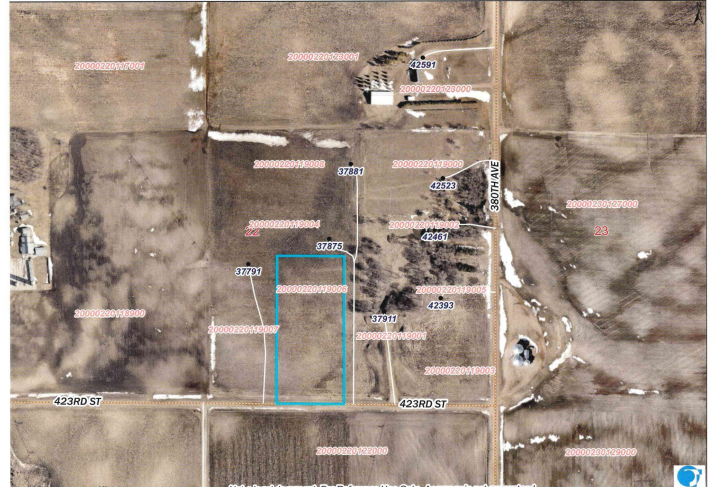
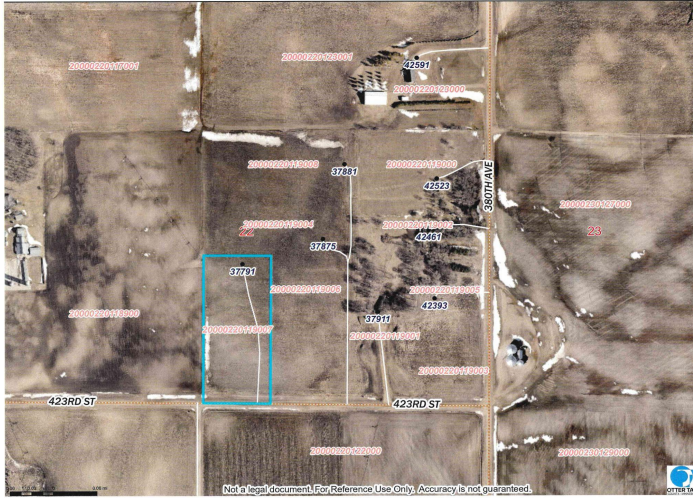
Call Affinity Real Estate

218-237-3333

info@affinityrealestate.com



Affinity Real Estate - 600 Park Avenue South - Park Rapids MN 56470



website: www.AffinityRealEstate.com | email: info@affinityrealestate.com | office: 218-237-3333 | fax: 218-237-3377



\$85,000
 MLS 7086821 Land
 37791 423rd Street
 Dent MN 56528



website: www.AffinityRealEstate.com | email: info@affinityrealestate.com | office: 218-237-3333 | fax:218-237-3377



\$85,000
MLS 7086821 Land
37791 423rd Street
Dent MN 56528