



MLS 7087030 Residential

\$235,000

968 sq ft
2 bedrooms
1 baths

9511 White Sage Drive
Wilton MN 56601

Status: Active

Description:

(description unavailable)

Additional Details:

Year Built	2026
Lot Acres	1.53
Lot Dimensions	433x277ft
Garage Stalls	1
School District	31
Taxes	\$326
Taxes with Assessments	\$326
Tax Year	2026

Additional Features:

Basement: None **Fuel:** Electric, Propane **Garage:** 1 **Heat:** Ductless Mini-Split, In-Floor Heating **Sewer:** Mound Septic **Water:** Private, Well **Air Conditioning:** Ductless Mini-Split

Driving Directions:

Head north on 89 from HWY 2 about 5 miles. Turn left onto Scribner RD. Turn right onto White Sage DR



Listed By:
Real Broker, LLC

Affinity Real Estate Inc. participates in the Regional Multiple Listing Service of Minnesota, Inc Broker Reciprocity (sm) program, allowing us to display other broker's listings on our website. All properties are subject to prior sale, change or withdrawal.



Call Affinity Real Estate

218-237-3333

info@affinityrealestate.com



Affinity Real Estate - 600 Park Avenue South - Park Rapids MN 56470



website: www.AffinityRealEstate.com | email: info@affinityrealestate.com | office: 218-237-3333 | fax:218-237-3377



\$235,000
MLS 7087030 Residential
9511 White Sage Drive
Wilton MN 56601



website: www.AffinityRealEstate.com | email: info@affinityrealestate.com | office: 218-237-3333 | fax:218-237-3377



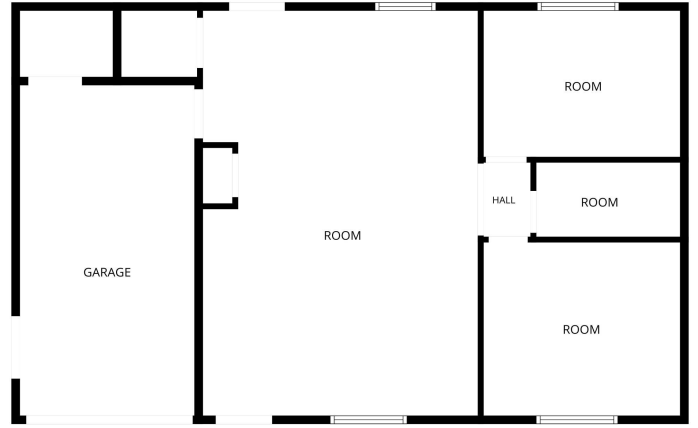
\$235,000
MLS 7087030 Residential
9511 White Sage Drive
Wilton MN 56601



website: www.AffinityRealEstate.com | email: info@affinityrealestate.com | office: 218-237-3333 | fax:218-237-3377



\$235,000
MLS 7087030 Residential
9511 White Sage Drive
Wilton MN 56601



FLOOR PLAN CREATED BY EUBICASA APP. MEASUREMENTS DEEMED HIGHLY RELIABLE BUT NOT GUARANTEED.

website: www.AffinityRealEstate.com | email: info@affinityrealestate.com | office: 218-237-3333 | fax:218-237-3377



\$235,000
MLS 7087030 Residential
9511 White Sage Drive
Wilton MN 56601