



MLS 7087077 Lake Home

\$679,000

0 sq ft
2 bedrooms
2 baths

14292 Chippewa Loop
Park Rapids MN 56470

Waterfront: Long Lake (29016100)

Status: Active

Description:

The perfect escape located on the western shores of prestigious Long Lake. This attractive, log sided cabin provides ultimate comfort and a special ambiance that puts you in vacation mode as soon as you arrive. It features a thoughtful floor plan with 2 bedrooms plus a sleeping loft, 2 bathrooms, a freestanding gas fireplace, forced-air heat, mini-split air conditioning, vaulted ceilings, hardwood floors, tongue 'n groove throughout, a spray-foamed crawl space, covered porch, an 8x32 deck and fabulous lake views! Sits on 51ft of perfect sand swimming frontage with an awesome beach area to boot. Prime location just 5 minutes from Park Rapids. It can be purchased with the adjacent back lot which features a large garage and living quarters. See MLS# 7068255.

Additional Details:

Year Built	1966
Lot Acres	0.21
Lot Dimensions	51 x 180
School District	309
Taxes	\$2,179
Taxes with Assessments	\$2,424
Tax Year	2026

Additional Features:

Basement: Crawl Space **Fuel:** Propane **Heat:** Forced Air, Fireplace(s) **Sewer:** Septic System Compliant - Yes, Shared Septic, Tank with Drainage Field **Water:** Sand Point **Air Conditioning:** Ductless Mini-Split

Driving Directions:

From CR 6 @ Hwy 34: Go South on CR 6 to a left on Chippewa Loop. Proceed to 14292. The lake cabin sits on the left side of road.



Listed By:
Affinity Real Estate Inc.

Affinity Real Estate Inc. participates in the Regional Multiple Listing Service of Minnesota, Inc Broker Reciprocity (sm) program, allowing us to display other broker's listings on our website. All properties are subject to prior sale, change or withdrawal.



Call Affinity Real Estate

218-237-3333

info@affinityrealestate.com



Affinity Real Estate - 600 Park Avenue South - Park Rapids MN 56470



website: www.AffinityRealEstate.com | email: info@affinityrealestate.com | office: 218-237-3333 | fax:218-237-3377

Affinity
REAL ESTATE INC

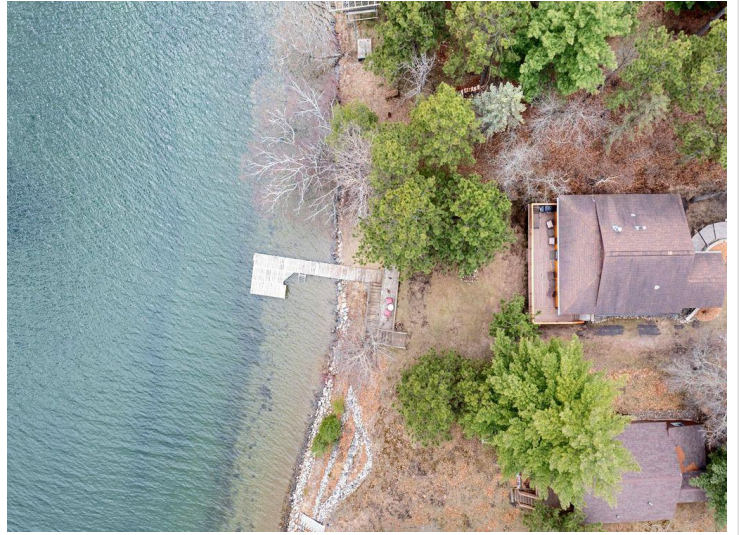
\$679,000
MLS 7087077 Lake Home
14292 Chippewa Loop
Park Rapids MN 56470



website: www.AffinityRealEstate.com | email: info@affinityrealestate.com | office: 218-237-3333 | fax:218-237-3377



\$679,000
MLS 7087077 Lake Home
14292 Chippewa Loop
Park Rapids MN 56470



website: www.AffinityRealEstate.com | email: info@affinityrealestate.com | office: 218-237-3333 | fax:218-237-3377

Affinity
REAL ESTATE INC

\$679,000
MLS 7087077 Lake Home
14292 Chippewa Loop
Park Rapids MN 56470



website: www.AffinityRealEstate.com | email: info@affinityrealestate.com | office: 218-237-3333 | fax: 218-237-3377

Affinity
REAL ESTATE INC

\$679,000
MLS 7087077 Lake Home
14292 Chippewa Loop
Park Rapids MN 56470



website: www.AffinityRealEstate.com | email: info@affinityrealestate.com | office: 218-237-3333 | fax: 218-237-3377

Affinity
REAL ESTATE INC

\$679,000
MLS 7087077 Lake Home
14292 Chippewa Loop
Park Rapids MN 56470



website: www.AffinityRealEstate.com | email: info@affinityrealestate.com | office: 218-237-3333 | fax:218-237-3377



\$679,000
MLS 7087077 Lake Home
14292 Chippewa Loop
Park Rapids MN 56470