



MLS 7087088 Lake Home

**\$594,200**

1,439 sq ft  
3 bedrooms  
2 baths

13384 Sorenson Lake Road  
Merrifield MN 56465

Waterfront: Spider

Status: Active

**Description:**

Welcome to 13384 Sorenson Lake Road in Merrifield, nestled on 40 acres of private land and surrounded primarily by Minnesota state land. This property is a true outdoor paradise, offering excellent hunting opportunities, abundant wildlife, and access to Spider Lake, making it ideal for waterfowl hunters, trappers, and nature lovers. Accessed via an easement through state land, the property provides exceptional privacy and seclusion while still offering a comfortable place to call home.

This spacious single-story home features three bedrooms and two bathrooms, with elegant granite countertops throughout and stainless steel appliances in the kitchen. The primary bedroom includes a private bathroom, creating a comfortable retreat after a day spent enjoying the outdoors.

With rolling natural beauty, abundant wildlife, a duck blind perfect for hunting, and multiple potential building sites, this property offers endless possibilities. Whether you're looking for a year-round residence, hunting retreat, or future cabin site, you'll enjoy peaceful views and direct access to the Northwoods lifestyle you've been searching for.

**Additional Details:**

Year Built	2026
Lot Acres	40.64
Lot Dimensions	1333x1330x1327x1332
Garage Stalls	2
School District	181
Taxes	\$470
Taxes with Assessments	\$470
Tax Year	2025

**Additional Features:**

**Basement:** None **Fuel:** Propane **Garage:** 2 **Heat:** Forced Air **Sewer:** Private Sewer **Water:** Private **Air Conditioning:** Central Air

**Driving Directions:**

From 210 Turn left on county road 3, take a right on Sorenson Lake

Listed By:  
Counselor Realty Brainerd Lakes



Affinity Real Estate Inc. participates in the Regional Multiple Listing Service of Minnesota, Inc Broker Reciprocity (sm) program, allowing us to display other broker's listings on our website. All properties are subject to prior sale, change or withdrawal.



Call Affinity Real Estate

**218-237-3333**

[info@affinityrealestate.com](mailto:info@affinityrealestate.com)



Affinity Real Estate - 600 Park Avenue South - Park Rapids MN 56470



website: [www.AffinityRealEstate.com](http://www.AffinityRealEstate.com) | email: [info@affinityrealestate.com](mailto:info@affinityrealestate.com) | office: 218-237-3333 | fax:218-237-3377



**\$594,200**  
MLS 7087088 Lake Home  
13384 Sorenson Lake Road  
Merrifield MN 56465



website: [www.AffinityRealEstate.com](http://www.AffinityRealEstate.com) | email: [info@affinityrealestate.com](mailto:info@affinityrealestate.com) | office: 218-237-3333 | fax:218-237-3377



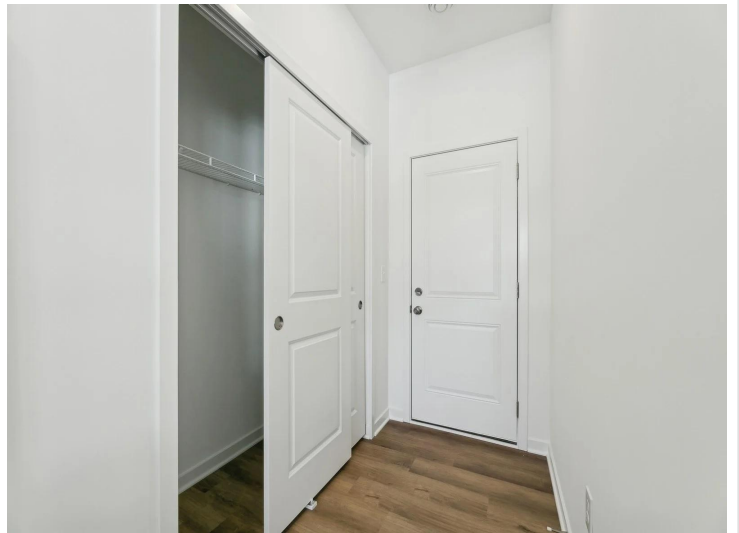
**\$594,200**  
MLS 7087088 Lake Home  
13384 Sorenson Lake Road  
Merrifield MN 56465



website: [www.AffinityRealEstate.com](http://www.AffinityRealEstate.com) | email: [info@affinityrealestate.com](mailto:info@affinityrealestate.com) | office: 218-237-3333 | fax:218-237-3377



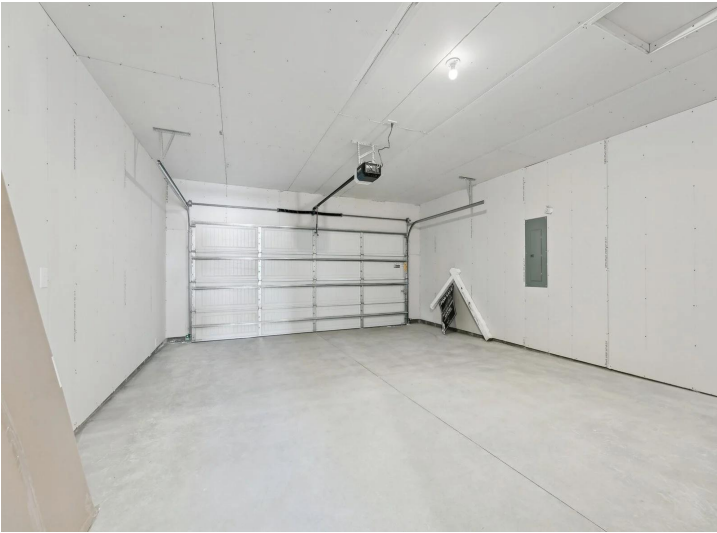
**\$594,200**  
MLS 7087088 Lake Home  
13384 Sorenson Lake Road  
Merrifield MN 56465



website: [www.AffinityRealEstate.com](http://www.AffinityRealEstate.com) | email: [info@affinityrealestate.com](mailto:info@affinityrealestate.com) | office: 218-237-3333 | fax:218-237-3377



**\$594,200**  
MLS 7087088 Lake Home  
13384 Sorenson Lake Road  
Merrifield MN 56465



website: [www.AffinityRealEstate.com](http://www.AffinityRealEstate.com) | email: [info@affinityrealestate.com](mailto:info@affinityrealestate.com) | office: 218-237-3333 | fax:218-237-3377



**\$594,200**  
MLS 7087088 Lake Home  
13384 Sorenson Lake Road  
Merrifield MN 56465



website: [www.AffinityRealEstate.com](http://www.AffinityRealEstate.com) | email: [info@affinityrealestate.com](mailto:info@affinityrealestate.com) | office: 218-237-3333 | fax:218-237-3377



**\$594,200**  
MLS 7087088 Lake Home  
13384 Sorenson Lake Road  
Merrifield MN 56465



website: [www.AffinityRealEstate.com](http://www.AffinityRealEstate.com) | email: [info@affinityrealestate.com](mailto:info@affinityrealestate.com) | office: 218-237-3333 | fax:218-237-3377



**\$594,200**  
MLS 7087088 Lake Home  
13384 Sorenson Lake Road  
Merrifield MN 56465



website: [www.AffinityRealEstate.com](http://www.AffinityRealEstate.com) | email: [info@affinityrealestate.com](mailto:info@affinityrealestate.com) | office: 218-237-3333 | fax:218-237-3377



**\$594,200**  
MLS 7087088 Lake Home  
13384 Sorenson Lake Road  
Merrifield MN 56465