



MLS 7087089 Residential

\$370,000

2,440 sq ft
4 bedrooms
3 baths

12851 Everlasting Drive
Park Rapids MN 56470

Status: Coming Soon

Description:

This remodeled 4 bedroom, 3 bath home offers the perfect blend of country living and convenience, located on just over 2 acres only minutes west of Park Rapids with easy access to schools, shopping, and work. The main level features 2 bedrooms and 2 bathrooms, with the primary having a private bathroom, providing comfortable one-level living. The lower level includes 2 additional bedrooms, a bathroom, and a spacious family room for extra living and entertaining space. Outside, you'll find an attached 26' x 36' triple garage along with a 36' x 40' pole building, offering plenty of room for vehicles, hobbies, storage, or a workshop. With recent updates, generous living space, and excellent outbuildings, this property is ready to enjoy both inside and out. Interior photos will be posted on Thursday.

Additional Details:

Year Built	1984
Lot Acres	2.08
Lot Dimensions	274 x 330
Garage Stalls	3
School District	309
Taxes	\$1,567
Taxes with Assessments	\$1,812
Tax Year	2026

Additional Features:

Fuel: Propane **Heat:** Forced Air

Driving Directions:

From the Hwy 71/34 intersection in Park Rapids, go west on 34 to 129th Ave/Cty 28. Take a right onto 129th and then a left onto Everlasting Drive. It is the first house on the left.



Listed By:
Keller Williams Realty Professionals

Affinity Real Estate Inc. participates in the Regional Multiple Listing Service of Minnesota, Inc Broker Reciprocity (sm) program, allowing us to display other broker's listings on our website. All properties are subject to prior sale, change or withdrawal.



Call Affinity Real Estate

218-237-3333

info@affinityrealestate.com



Affinity Real Estate - 600 Park Avenue South - Park Rapids MN 56470



website: www.AffinityRealEstate.com | email: info@affinityrealestate.com | office: 218-237-3333 | fax:218-237-3377



\$370,000
MLS 7087089 Residential
12851 Everlasting Drive
Park Rapids MN 56470

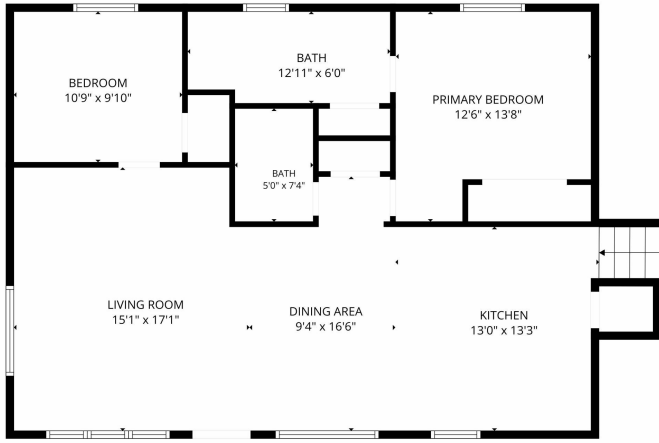


FLOOR PLAN CREATED BY CUBICAGA APP. MEASUREMENTS DEEMED HIGHLY RELIABLE BUT NOT GUARANTEED.

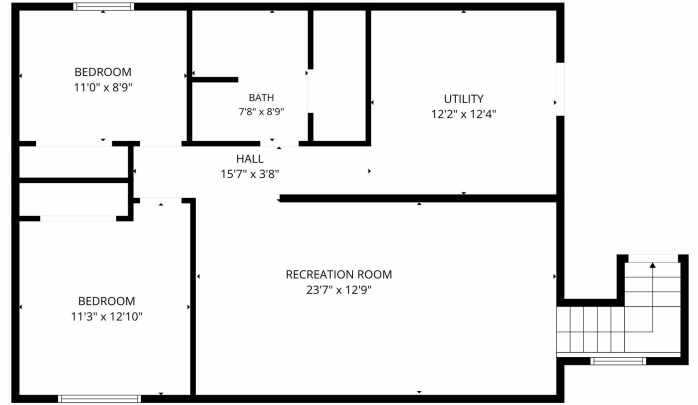
website: www.AffinityRealEstate.com | email: info@affinityrealestate.com | office: 218-237-3333 | fax: 218-237-3377



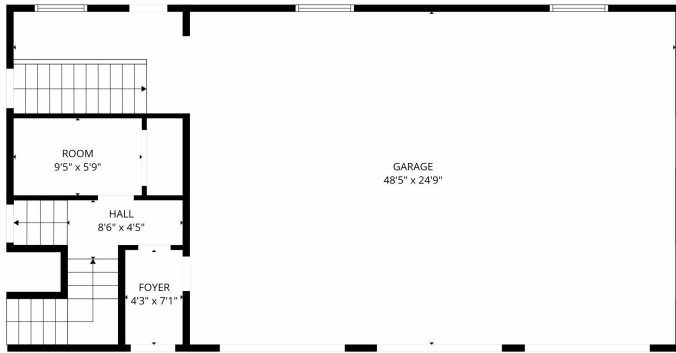
\$370,000
 MLS 7087089 Residential
 12851 Everlasting Drive
 Park Rapids MN 56470



FLOOR PLAN CREATED BY CURICASA APP. MEASUREMENTS DEEMED HIGHLY RELIABLE BUT NOT GUARANTEED.



FLOOR PLAN CREATED BY CURICASA APP. MEASUREMENTS DEEMED HIGHLY RELIABLE BUT NOT GUARANTEED.



FLOOR PLAN CREATED BY CURICASA APP. MEASUREMENTS DEEMED HIGHLY RELIABLE BUT NOT GUARANTEED.

website: www.AffinityRealEstate.com | email: info@affinityrealestate.com | office: 218-237-3333 | fax: 218-237-3377



\$370,000
 MLS 7087089 Residential
 12851 Everlasting Drive
 Park Rapids MN 56470