



MLS 7087244 Land

\$30,000

1.66 Acres
Finished Lot(s)

XXX Lot 3 130th Street
Staples MN 56479

Status: Active



Description:

PID - 13-4100080. Nicely wooded lot available on 18-hole golf course. The club house offers seasonal dining. 1.66 acres available to build your dream home. Located just 10 minutes north of Staples and 30 minutes from the Brainerd Lakes Area. This beautiful location is close to; Living Legacy Gardens which is just a few minutes away, the paved bike/walking path and within walking distance of the Crow Wing River.

Additional Details:

Lot Acres	1.66
Lot Dimensions	327x206x226x201x102
School District	2170
Taxes	\$186
Taxes with Assessments	\$186
Tax Year	2026

Additional Features:

Driving Directions:

From US Hwy 10 in Staples turn north on to Cardinal Drive to left turn on to Airport Road, continue north at 4-way stop at CLC to right turn on to 130th Street. See sign.



Listed By:
Edina Realty, Inc.

Affinity Real Estate Inc. participates in the Regional Multiple Listing Service of Minnesota, Inc Broker Reciprocity (sm) program, allowing us to display other broker's listings on our website. All properties are subject to prior sale, change or withdrawal.



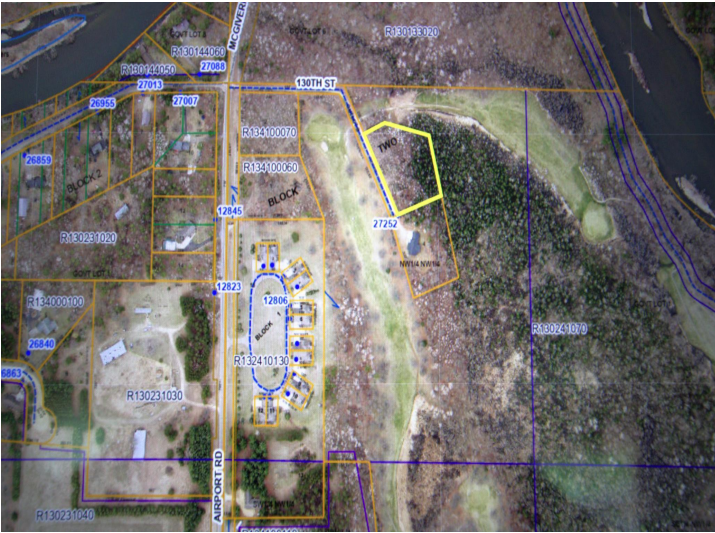
Call Affinity Real Estate

218-237-3333

info@affinityrealestate.com



Affinity Real Estate - 600 Park Avenue South - Park Rapids MN 56470



website: www.AffinityRealEstate.com | email: info@affinityrealestate.com | office: 218-237-3333 | fax:218-237-3377



\$30,000
 MLS 7087244 Land
 XXX Lot 3 130th Street
 Staples MN 56479