



MLS 7087245 Residential

\$199,900

1,204 sq ft
2 bedrooms
1 baths

17233 County 13
Nevis MN 56467

Status: Active

Description:

Discover the Nevis Country Home! This charming 2-bedroom, 1-bath residence boasts stunning new flooring and a spacious 2-car detached garage. Ideally situated on over 2 acres of land, near downtown Nevis, you'll enjoy easy access to the Heartland Trail, the beautiful Paul Bunyan State Forest, and a variety of scenic lakes in the area. Don't miss out on this perfect blend of comfort and convenience!

Additional Details:

Year Built	1948
Lot Acres	2.25
Lot Dimensions	281x628
Garage Stalls	2
School District	308
Taxes	\$1,120
Taxes with Assessments	\$1,120
Tax Year	2026

Additional Features:

Basement: Partial **Fuel:** Propane **Garage:** 2 **Heat:** Forced Air **Sewer:** Private Sewer, Tank with Drainage Field **Water:** Drilled **Air Conditioning:** Central Air

Driving Directions:

From 34/County 13, head south on County 13 approximately 5 miles to 17233 blue number on right.



Listed By:
Wolff & Simon Real Estate

Affinity Real Estate Inc. participates in the Regional Multiple Listing Service of Minnesota, Inc Broker Reciprocity (sm) program, allowing us to display other broker's listings on our website. All properties are subject to prior sale, change or withdrawal.



Call Affinity Real Estate

218-237-3333

info@affinityrealestate.com



Affinity Real Estate - 600 Park Avenue South - Park Rapids MN 56470



website: www.AffinityRealEstate.com | email: info@affinityrealestate.com | office: 218-237-3333 | fax:218-237-3377



\$199,900
MLS 7087245 Residential
17233 County 13
Nevis MN 56467



website: www.AffinityRealEstate.com | email: info@affinityrealestate.com | office: 218-237-3333 | fax:218-237-3377

Affinity
REAL ESTATE INC

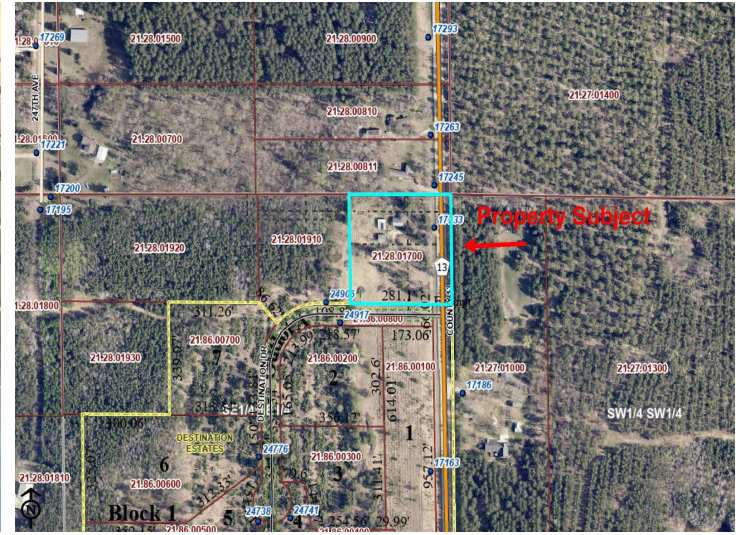
\$199,900
MLS 7087245 Residential
17233 County 13
Nevis MN 56467



website: www.AffinityRealEstate.com | email: info@affinityrealestate.com | office: 218-237-3333 | fax:218-237-3377



\$199,900
MLS 7087245 Residential
17233 County 13
Nevis MN 56467



website: www.AffinityRealEstate.com | email: info@affinityrealestate.com | office: 218-237-3333 | fax: 218-237-3377



\$199,900
MLS 7087245 Residential
17233 County 13
Nevis MN 56467