



MLS 7087300 Lake Home

\$489,900

2,149 sq ft
2 bedrooms
2 baths

48316 Pillar Road
Deer River MN 56636

Waterfront: Jessie

Status: Active

Description:

Experience the best of Up North living on highly sought-after Jessie Lake, known as one of the area's premier walleye fishing lakes. This charming lake home or cabin offers over 400 feet of shoreline, nearly 2 acres of privacy, and a peaceful setting at the end of a dead-end road.

The property features attractive half-log siding and a newly updated 4-stall garage with LP SmartSide siding, including two insulated and heated stalls—perfect for storing all your lake toys and outdoor equipment.

Inside, you'll love the open kitchen and dining area with panoramic lake views and abundant natural light. Nearly every room in the home captures breathtaking views of the water. A cozy fireplace creates the perfect gathering space, while the lakeside deck provides an ideal spot to relax and enjoy sunsets over the lake.

Numerous updates have already been completed, including a new roof, Marvin windows, updated electrical, flooring, and a 110-foot dock. Whether you're looking for a year-round home or a seasonal retreat, this Jessie Lake property offers privacy, stunning views, excellent fishing, and the true Northwoods lifestyle.

Additional Details:


| | |
|------------------------|-------|
| Year Built | 1967 |
| Lot Acres | 1.94 |
| Lot Dimensions | Irr |
| Garage Stalls | 4 |
| School District | 317 |
| Taxes | \$863 |
| Taxes with Assessments | \$944 |
| Tax Year | 2026 |

Additional Features:

Basement: Block, Partial, Walkout **Fuel:** Propane **Garage:** 4 **Heat:** Forced Air **Sewer:** Private Sewer **Water:** Well **Air Conditioning:** None

Driving Directions:

Google Maps sometimes has you turn 1 street early. Make sure you turn onto Pillar Rd follow to the end on the right.

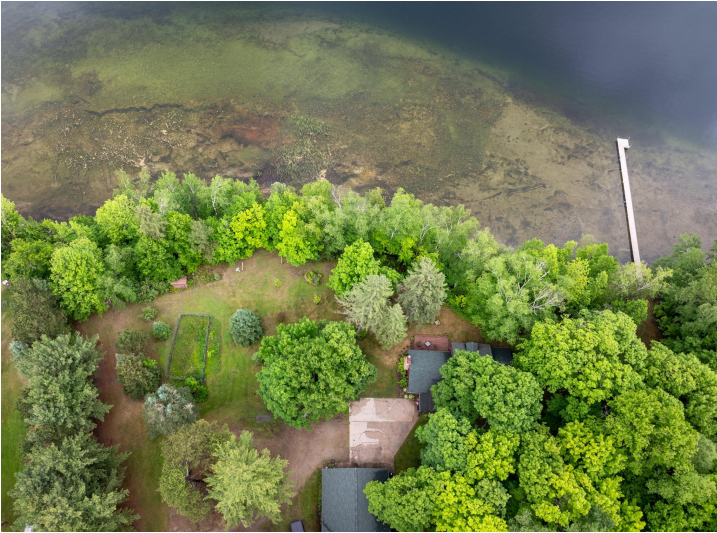
 Listed By:
EDGE OF THE WILDERNESS REALTY

Affinity Real Estate Inc. participates in the Regional Multiple Listing Service of Minnesota, Inc Broker Reciprocity (sm) program, allowing us to display other broker's listings on our website. All properties are subject to prior sale, change or withdrawal.

 **Call Affinity Real Estate**
218-237-3333
info@affinityrealestate.com

Affinity Real Estate - 600 Park Avenue South - Park Rapids MN 56470



website: www.AffinityRealEstate.com | email: info@affinityrealestate.com | office: 218-237-3333 | fax: 218-237-3377

Affinity
REAL ESTATE INC

\$489,900
MLS 7087300 Lake Home
48316 Pillar Road
Deer River MN 56636



website: www.AffinityRealEstate.com | email: info@affinityrealestate.com | office: 218-237-3333 | fax: 218-237-3377

Affinity
REAL ESTATE INC

\$489,900
MLS 7087300 Lake Home
48316 Pillar Road
Deer River MN 56636



website: www.AffinityRealEstate.com | email: info@affinityrealestate.com | office: 218-237-3333 | fax: 218-237-3377

Affinity
REAL ESTATE INC

\$489,900
MLS 7087300 Lake Home
48316 Pillar Road
Deer River MN 56636



website: www.AffinityRealEstate.com | email: info@affinityrealestate.com | office: 218-237-3333 | fax:218-237-3377

Affinity
REAL ESTATE INC

\$489,900
MLS 7087300 Lake Home
48316 Pillar Road
Deer River MN 56636



website: www.AffinityRealEstate.com | email: info@affinityrealestate.com | office: 218-237-3333 | fax:218-237-3377

Affinity
REAL ESTATE INC

\$489,900
MLS 7087300 Lake Home
48316 Pillar Road
Deer River MN 56636



website: www.AffinityRealEstate.com | email: info@affinityrealestate.com | office: 218-237-3333 | fax:218-237-3377



\$489,900
MLS 7087300 Lake Home
48316 Pillar Road
Deer River MN 56636



website: www.AffinityRealEstate.com | email: info@affinityrealestate.com | office: 218-237-3333 | fax:218-237-3377



\$489,900
MLS 7087300 Lake Home
48316 Pillar Road
Deer River MN 56636



website: www.AffinityRealEstate.com | email: info@affinityrealestate.com | office: 218-237-3333 | fax:218-237-3377



\$489,900
MLS 7087300 Lake Home
48316 Pillar Road
Deer River MN 56636