



MLS 7087466 Land

\$26,500

1 Acres
Raw Land

Lot 2 Block 2 Deer Lane
Wadena MN 56482

Status: Active



These data are provided on an "AS-IS" basis, without warranty of any type, expressed or implied, including but not limited to any warranty as to their performance, merchantability, or fitness for any particular purpose.

Lot 2 Block 2 Deer Lane
R228990145

1:1788

Date: 6/4/2026



Description:

Nice 1 acre level lot ready for your new home! Great location, close to Leaf River Recreational Trail and Whitetail Run Golf Course ~ which was voted the best public course in Minnesota! Build to suit options and more lots available.

Additional Details:

Lot Acres	1
Lot Dimensions	227x187x227x213
School District	2155
Taxes	\$320
Taxes with Assessments	\$320
Tax Year	2026

Additional Features:

Driving Directions:

From Wadena, go North on #71, to right on Leaf River Road, to right on Driver Road, to left on Deer Lane to lot on the right. Lot 2 Block 2.



Listed By:
Edina Realty, Inc.

Affinity Real Estate Inc. participates in the Regional Multiple Listing Service of Minnesota, Inc Broker Reciprocity (sm) program, allowing us to display other broker's listings on our website. All properties are subject to prior sale, change or withdrawal.



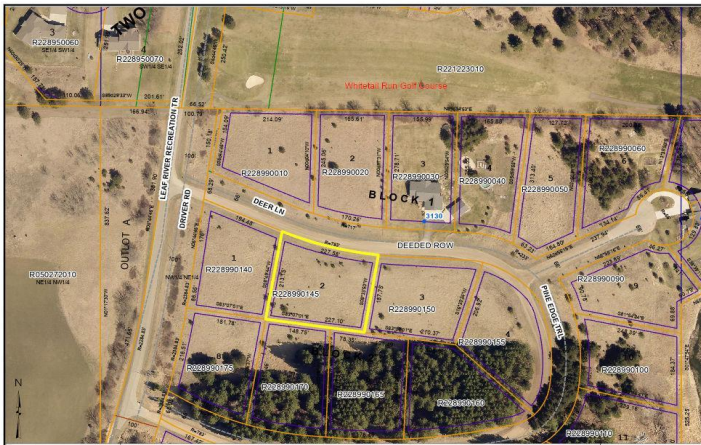
Call Affinity Real Estate

218-237-3333

info@affinityrealestate.com



Affinity Real Estate - 600 Park Avenue South - Park Rapids MN 56470



These data are provided on an "AS-IS" basis, without warranty of any type, expressed or implied, including but not limited to any warranty as to their performance, merchantability, or fitness for any particular purpose.

11788

Wadena County

Date: 6/4/2026



website: www.AffinityRealEstate.com | email: info@affinityrealestate.com | office: 218-237-3333 | fax: 218-237-3377



\$26,500
 MLS 7087466 Land
 Lot 2 Block 2 Deer Lane
 Wadena MN 56482