



MLS 7087485 Residential

\$497,950

2,033 sq ft
3 bedrooms
2 baths

TBD Lot 3 Block 2 Deer Lane
Wadena MN 56482

Status: Active



Description:

To-be-built home - This beautiful new construction 3 bedroom/2 bath home has over 2,000 sq. ft of living space and offers easy one level living! Great open floor plan, with gourmet style kitchen, 4 season porch, primary suite with tiled shower, in-floor heat, forced air furnace, AC, LP Smart siding and several allowances offered to help you make this home your own! Great location, close to Leaf River Trail and Whitetail Run Golf Course - which was voted the best public course in Minnesota! More lots available.

Additional Details:

Year Built	2026
Lot Acres	1
Lot Dimensions	239x207x210x188
Garage Stalls	3
School District	2155
Taxes	\$320
Taxes with Assessments	\$320
Tax Year	2026

Additional Features:

Basement: None **Fuel:** Propane **Garage:** 3 **Heat:** Forced Air, In-Floor Heating **Sewer:** Private Sewer **Water:** Well **Air Conditioning:** Central Air

Driving Directions:

From Wadena, go North on #71, to right on Leaf River Road, to right on Driver Road, to left on Deer Lane, to second lot on the right. Lot 3 Block 2.



Listed By:
Edina Realty, Inc.

Affinity Real Estate Inc. participates in the Regional Multiple Listing Service of Minnesota, Inc Broker Reciprocity (sm) program, allowing us to display other broker's listings on our website. All properties are subject to prior sale, change or withdrawal.



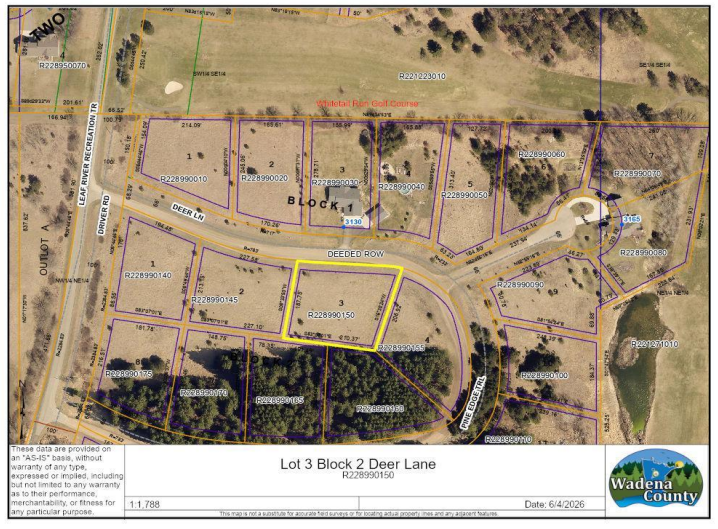
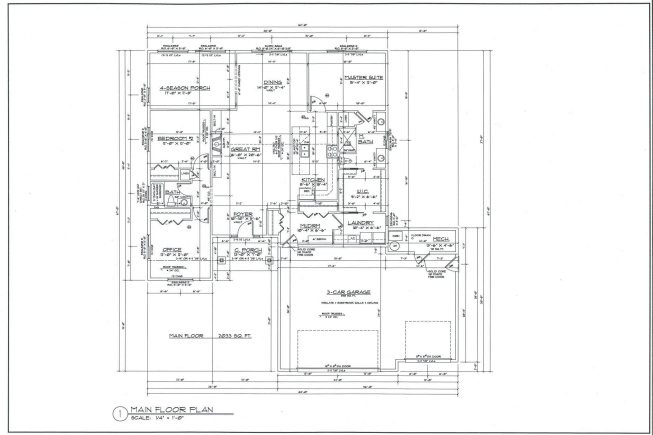
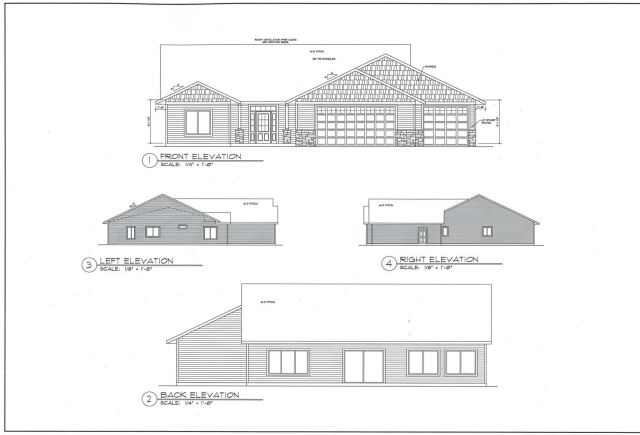
Call Affinity Real Estate

218-237-3333

info@affinityrealestate.com



Affinity Real Estate - 600 Park Avenue South - Park Rapids MN 56470



website: www.AffinityRealEstate.com | email: info@affinityrealestate.com | office: 218-237-3333 | fax: 218-237-3377



\$497,950
 MLS 7087485 Residential
 TBD Lot 3 Block 2 Deer Lane
 Wadena MN 56482