



MLS 7087965 Lake Home

**\$359,900**

1,424 sq ft  
2 bedrooms  
1 baths

19068 US 71  
Park Rapids MN 56470

Waterfront: Fishhook River

Status: Active

**Description:**

Cozy two bedroom home on the west shore of the Fishhook River. Oversized double garage with plenty of room for a workshop or bunkhouse! Blacktop driveway and storage shed out front, and a wonderful screen porch on the back-riverside of the home. Dock is in place and the property is ready for immediate occupancy. Some furnishings will be included. This is the former Engel Signs commercial location, a perfect place to live and run your own business or use as a year-round home or snowbird cabin.

**Additional Details:**

Year Built	1950
Lot Acres	0.54
Lot Dimensions	63x275x112x272
Garage Stalls	2
School District	309
Taxes	\$3,602
Taxes with Assessments	\$3,908
Tax Year	2026

**Additional Features:**

**Basement:** Partial **Fuel:** Natural Gas **Garage:** 2 **Heat:** Forced Air **Sewer:** City Sewer/Connected **Water:** City Water/Connected, Well **Air Conditioning:** Central Air

**Driving Directions:**

From Hwy 34 & US 71, go North on Hwy 71 approximately 1 mile and watch for 1068 on the right- ("Engel Signs" sign board near highway)



Listed By:  
Keller Williams Realty Professionals

Affinity Real Estate Inc. participates in the Regional Multiple Listing Service of Minnesota, Inc Broker Reciprocity (sm) program, allowing us to display other broker's listings on our website. All properties are subject to prior sale, change or withdrawal.



**Call Affinity Real Estate**

**218-237-3333**

**info@affinityrealestate.com**



**Affinity Real Estate - 600 Park Avenue South - Park Rapids MN 56470**



website: [www.AffinityRealEstate.com](http://www.AffinityRealEstate.com) | email: [info@affinityrealestate.com](mailto:info@affinityrealestate.com) | office: 218-237-3333 | fax:218-237-3377

**Affinity**  
REAL ESTATE INC

**\$359,900**  
MLS 7087965 Lake Home  
19068 US 71  
Park Rapids MN 56470



website: [www.AffinityRealEstate.com](http://www.AffinityRealEstate.com) | email: [info@affinityrealestate.com](mailto:info@affinityrealestate.com) | office: 218-237-3333 | fax: 218-237-3377

**Affinity**  
REAL ESTATE INC

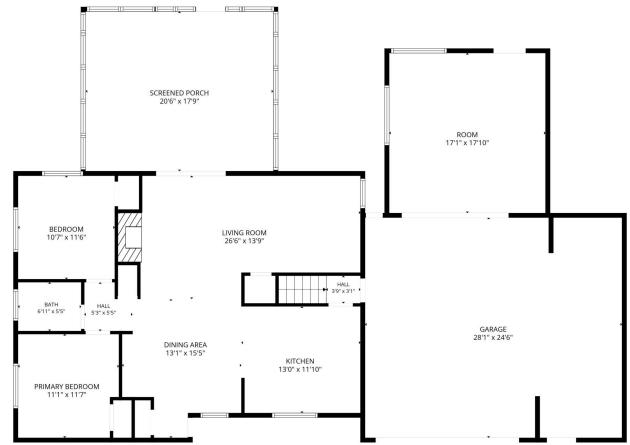
**\$359,900**  
MLS 7087965 Lake Home  
19068 US 71  
Park Rapids MN 56470



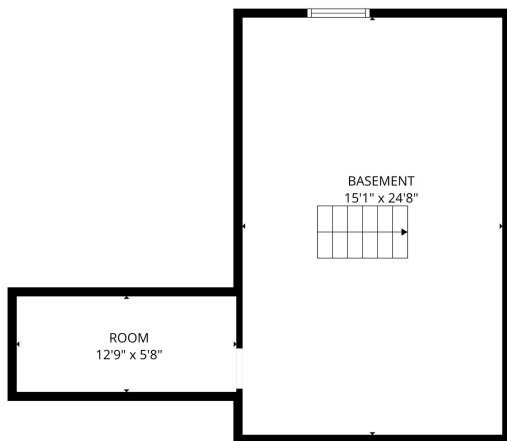
website: [www.AffinityRealEstate.com](http://www.AffinityRealEstate.com) | email: [info@affinityrealestate.com](mailto:info@affinityrealestate.com) | office: 218-237-3333 | fax: 218-237-3377

**Affinity**  
REAL ESTATE INC

**\$359,900**  
MLS 7087965 Lake Home  
19068 US 71  
Park Rapids MN 56470



FLOOR PLAN CREATED BY CUBICASA APP. MEASUREMENTS DEEMED HIGHLY RELIABLE BUT NOT GUARANTEED.



FLOOR PLAN CREATED BY CUBICASA APP. MEASUREMENTS DEEMED HIGHLY RELIABLE BUT NOT GUARANTEED.

website: [www.AffinityRealEstate.com](http://www.AffinityRealEstate.com) | email: [info@affinityrealestate.com](mailto:info@affinityrealestate.com) | office: 218-237-3333 | fax: 218-237-3377



**\$359,900**  
 MLS 7087965 Lake Home  
 19068 US 71  
 Park Rapids MN 56470