



MLS 7088027 Lake Home

**\$449,900**

1,950 sq ft  
3 bedrooms  
2 baths

7298 Sweetbrier Trail  
Akeley MN 56433

Waterfront: Long Lake (Shingobee Twp.)

Status: Coming Soon

**Description:**

Enjoy privacy, recreation, and stunning lake views at this beautifully updated home on 7 scenic acres just minutes from Walker. Overlooking Long Lake with private lake access and a shared community dock, this property offers the ideal Northwoods retreat. Recent updates throughout the home provide a fresh, move-in-ready feel. The kitchen has been beautifully remodeled with custom cabinetry, quartzite countertops, a new sink and faucet, stainless steel appliances, and new Pella windows that fill the space with natural light. Additional improvements include fresh interior paint, new carpeting in all bedrooms, updated lighting fixtures, ceiling fans, mirrors, and toilets. Comfort and efficiency have also been enhanced with a new mini-split heating and cooling system and off-peak Steffes heating. For added peace of mind, the roof and gutters were replaced just two years ago. The walkout lower level features a cozy gas fireplace, kitchenette, full bath, laundry area, two bedrooms, and direct access to the attached garage. The attached two-car garage offers oversized 10-foot doors, a dedicated workspace, ample storage, and new Chamberlain garage door openers. A detached three-car garage provides plenty of room for boats, ATVs, snowmobiles, and all your recreational gear. Located just 7 minutes from Walker and near the Heartland Trail, you'll enjoy easy access to biking, hiking, snowmobiling, and ATV adventures. Long Lake is known for excellent fishing, boating, kayaking, and a beautiful sandbar that's perfect for swimming, relaxing, and gathering with family and friends on warm summer days. Whether you're looking for a year-round residence, vacation getaway, or recreational retreat, this property offers endless opportunities to enjoy the outdoors. With panoramic lake views, extensive updates, exceptional garage space, and a prime location close to town, this move-in-ready property offers the very best of Minnesota's Northwoods lifestyle.

**Additional Details:**

Year Built	1998
Lot Acres	6.9
Lot Dimensions	439.57 x 80.59 x 299.82 x 195.52
Garage Stalls	5
School District	113
Taxes	\$1,796
Taxes with Assessments	\$1,882
Tax Year	2026

**Broker Reciprocity** Listed By: **Heidi Respondek, DRI**  
**Home Respondek, DRI** Fuel/Off Peak

**Affinity Real Estate** Inc. participates in the Regional Multiple Listing Service of Minnesota, Inc. Broker Reciprocity (sm) program, allowing us to display other broker's listings on our website. All properties are subject to the sale, change or withdrawal.



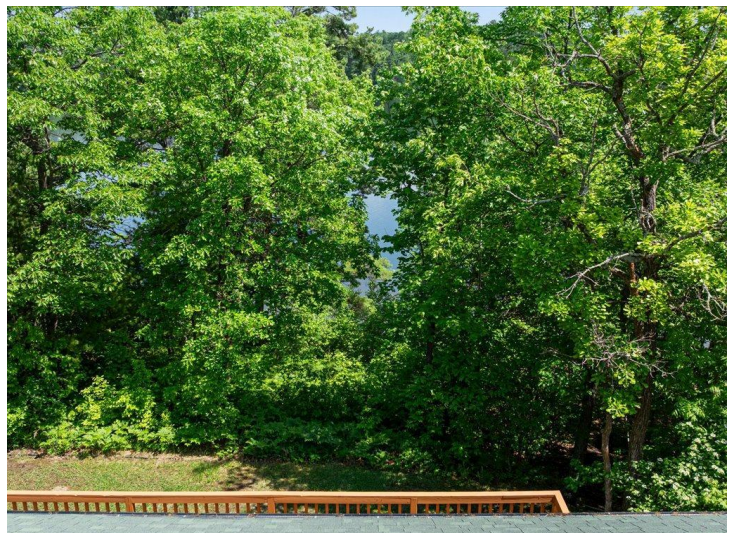
**Call Affinity Real Estate**

**218-237-3333**

**info@affinityrealestate.com**

**MLS** **R** **REALTOR** **SP** ght on Sweetbrier Trl,

**Affinity Real Estate - 600 Park Avenue South - Park Rapids MN 56470**



website: [www.AffinityRealEstate.com](http://www.AffinityRealEstate.com) | email: [info@affinityrealestate.com](mailto:info@affinityrealestate.com) | office: 218-237-3333 | fax: 218-237-3377



**\$449,900**  
MLS 7088027 Lake Home  
7298 Sweetbrier Trail  
Akeley MN 56433



website: [www.AffinityRealEstate.com](http://www.AffinityRealEstate.com) | email: [info@affinityrealestate.com](mailto:info@affinityrealestate.com) | office: 218-237-3333 | fax:218-237-3377



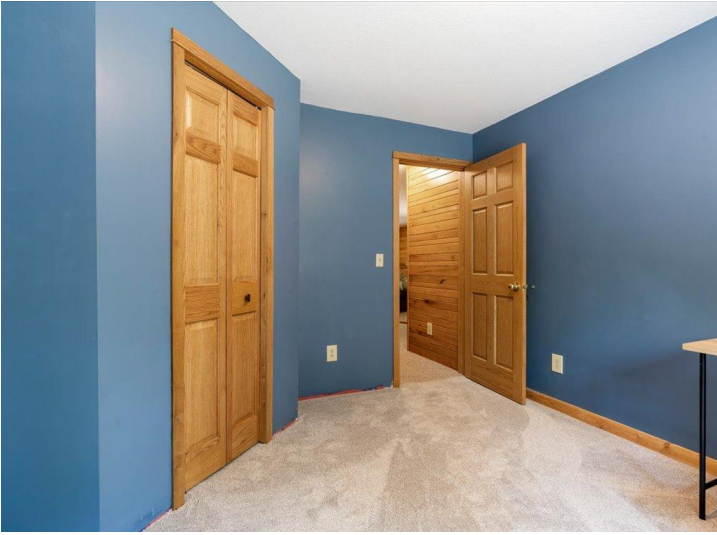
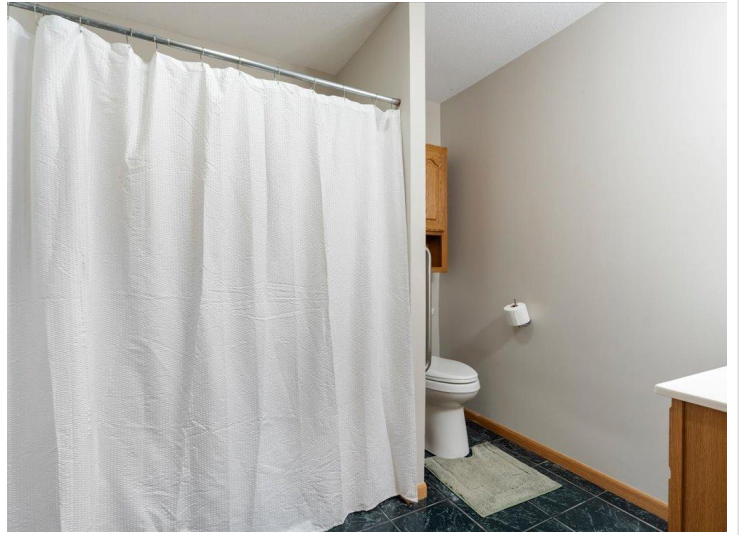
**\$449,900**  
MLS 7088027 Lake Home  
7298 Sweetbrier Trail  
Akeley MN 56433



website: [www.AffinityRealEstate.com](http://www.AffinityRealEstate.com) | email: [info@affinityrealestate.com](mailto:info@affinityrealestate.com) | office: 218-237-3333 | fax:218-237-3377



**\$449,900**  
MLS 7088027 Lake Home  
7298 Sweetbrier Trail  
Akeley MN 56433



website: [www.AffinityRealEstate.com](http://www.AffinityRealEstate.com) | email: [info@affinityrealestate.com](mailto:info@affinityrealestate.com) | office: 218-237-3333 | fax: 218-237-3377

**Affinity**  
REAL ESTATE INC

**\$449,900**  
MLS 7088027 Lake Home  
7298 Sweetbrier Trail  
Akeley MN 56433



website: [www.AffinityRealEstate.com](http://www.AffinityRealEstate.com) | email: [info@affinityrealestate.com](mailto:info@affinityrealestate.com) | office: 218-237-3333 | fax:218-237-3377

**Affinity**  
REAL ESTATE INC

**\$449,900**  
MLS 7088027 Lake Home  
7298 Sweetbrier Trail  
Akeley MN 56433



website: [www.AffinityRealEstate.com](http://www.AffinityRealEstate.com) | email: [info@affinityrealestate.com](mailto:info@affinityrealestate.com) | office: 218-237-3333 | fax:218-237-3377



**\$449,900**  
MLS 7088027 Lake Home  
7298 Sweetbrier Trail  
Akeley MN 56433